

Gammaropsis shoemakeri

Diagnostic Characters:

Eye large and reniform
Head lobe acute and distally toothed
Antenna 1, peduncular segment 1 bearing 2 thin posterodistal spines.
Gnathopods 1 and 2, male, margins densely setose
G1 male, segment 2 anterodistally produced into a lobe
G2, male and female, palm lacking a tooth
G2, female, palm not excavate
Coxa 7 slightly expanded
Urosome segments 1 and 2, carinations pointed
Uropod rami subequal
Urosome dorsally cusped
Peraeopods 3 and 4, segments 4 and 5 subequal

Illustration:

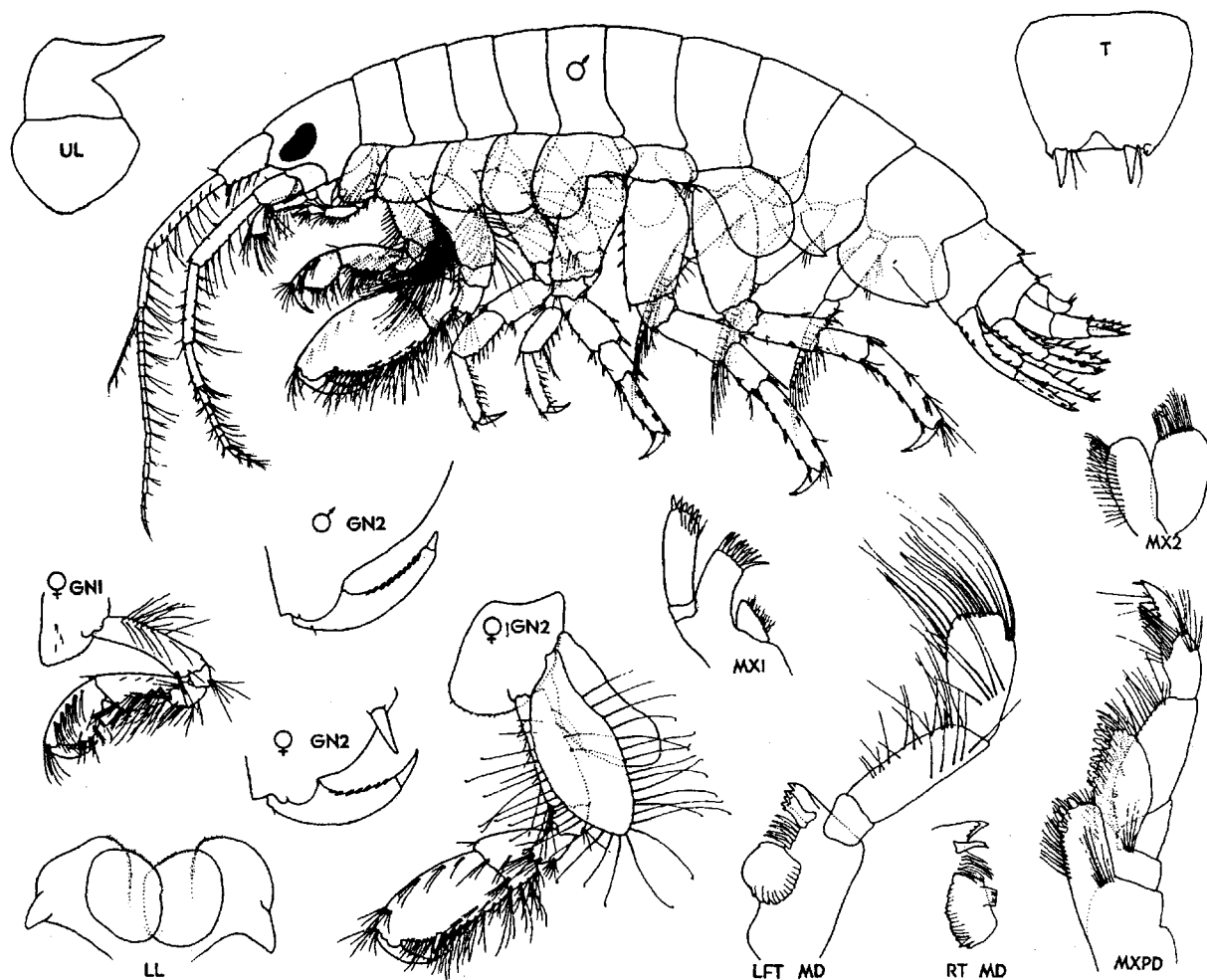


Figure 2. *Gammaropsis shoemakeri* n. sp. ♂ 5.5 mm, ♀ 5.5 mm. Hesquiat, Vancouver Is., B.C.