

Gammaropsis martesia

Diagnostic Characters:

Coxae 1-5 deeper than the body plates

Coxa 1 smaller and subquadrate

G2, male, with distinct palm; margin crenulate or with tooth, dactyl crenulate

G1, male, article 5 subequal with article 6

U3 peduncle long and subequal to U3 rami

Urosome not dorsally cusped

G1 and G2, male and female, subequal

Telson clearly bilobed

Illustration:

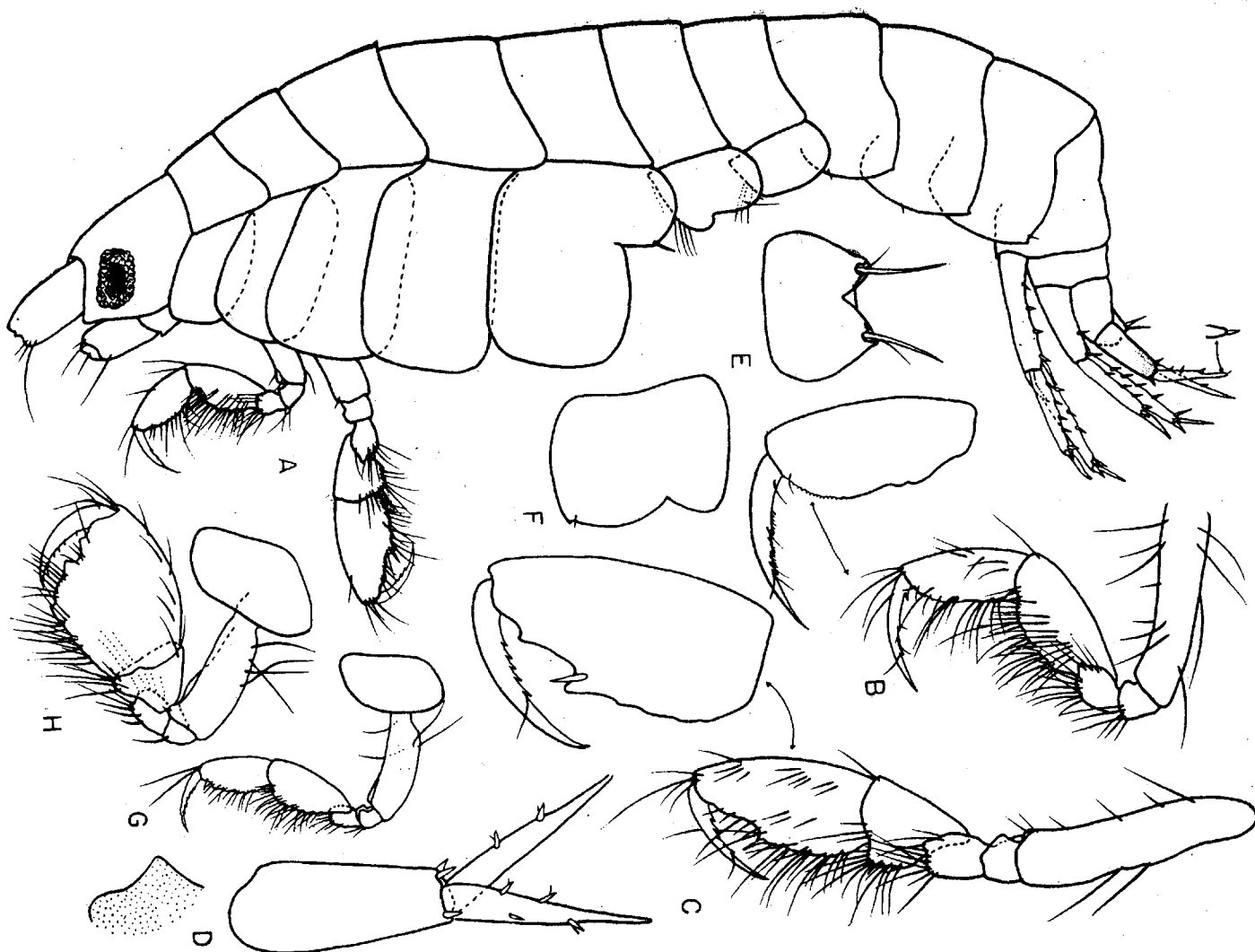


FIG. 10

Megamphopus martesia, sp. n., hembra, 3.0 mm, Est. 6181: A, vista total; B, C, gnatópodos 1, 2; D, urópodo 3; E, telsón; F, segmentos pleonales. Macho, holotipo, 3.0 mm; G, H, gnatópodos 1, 2; I, epístoma.

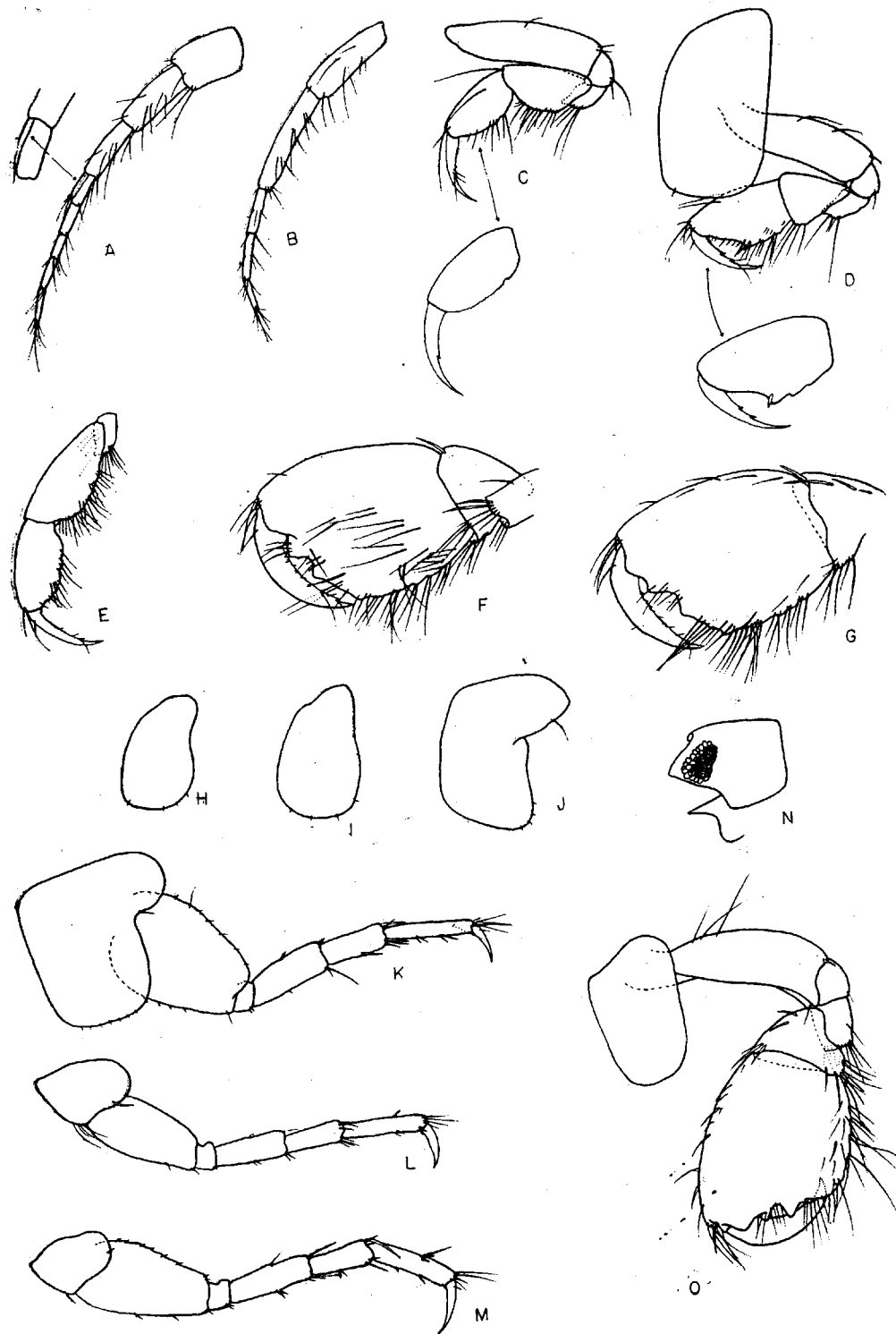


FIG. 11

Megamphopus marresia, sp. n., hembra, 3.0 mm, Est. 6181: A, B, antenas 1, 2; C, D, gnatópodos 1, 2. Macho, holotipo, Est. 6181: E, gnatópodo 1; F, vista medial de gnatópodo 2 de lado derecho; G, vista lateral de gnatópodo 2 de lado izquierdo; H, I, J, láminas coxales 3, 4, 5. Hembra, 3.0 mm, Est. 6192: K, L, M, pereiópodos 3, 4, 5. Macho, 3.5 mm, Est. 5737: N, cephalon; O, gnatópodo 2.