

SCAMIT Code: LACO 50

Date examined: June 10, 1985
Voucher by: Jimmy D. Laughlin

Literature:

Barnard, J. Laurens and Donald J. Reish. 1959. Ecology of Amphipoda and Polychaeta of Newport Bay, California. A.H.F. Occas. Pap., No. 21.

Diagnostic Characters:

1. Lateral headlobes slightly raised dorsally above head and produced and rounded anteriorly. Eyes dark brown and located at ends of lobes. (Fig. 1).
2. Gnathopod 1 of male complexly chelate (Fig. 2) and slightly larger than gnathopod 2 which is heavily setose. (Fig. 3). Female gnathopod 1-2 slenderer and unmodified.
3. Article 3 of mandibular palp stout and shorter than article 2, setose (Fig. 4).

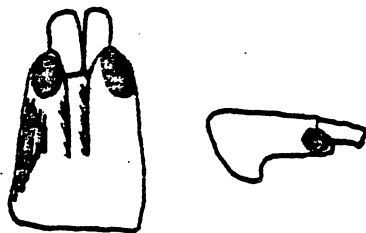


Figure 1. (after Barnard and Reisch, 1959).

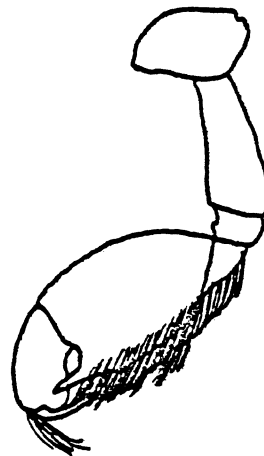


Figure 2. (after Barnard and Reisch, 1959).

Depth range:
2-247m.

Distribution:
Pt. Conception, California to Bahia de San Cristobal, Baja California.

Ecology:
Occurs with black mud and plant debris, sand and fine shell fragments, gray and brown sands with mud (J.L. Barnard, 1959). Strongly associated with Ampelisca (J.L. Barnard, 1964).

Comments:
Superficially similar and sometimes confused with Megamphopus but differs in structure of male gnathopod 1.

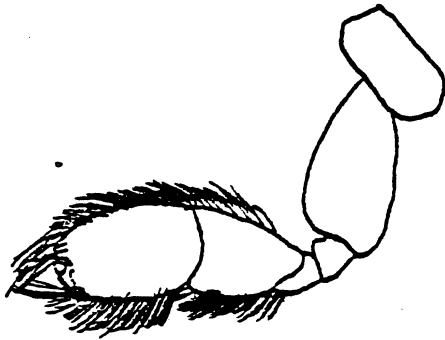


Figure 3. (after Barnard and Reish, 1959).

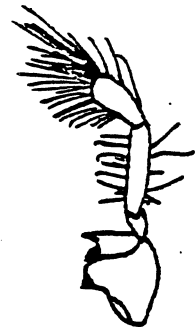


Figure 4. (after Barnard and Reish, 1959).