

# *Parajassa angularis*

## Diagnostic Characters:

Accessory flagellum is a small scale

G1, article 5, as long as or shorter than article 6

Pereopods 5-7, article 2, subovate or broadly rectangular

U3 with two fully developed rami

## Illustration:

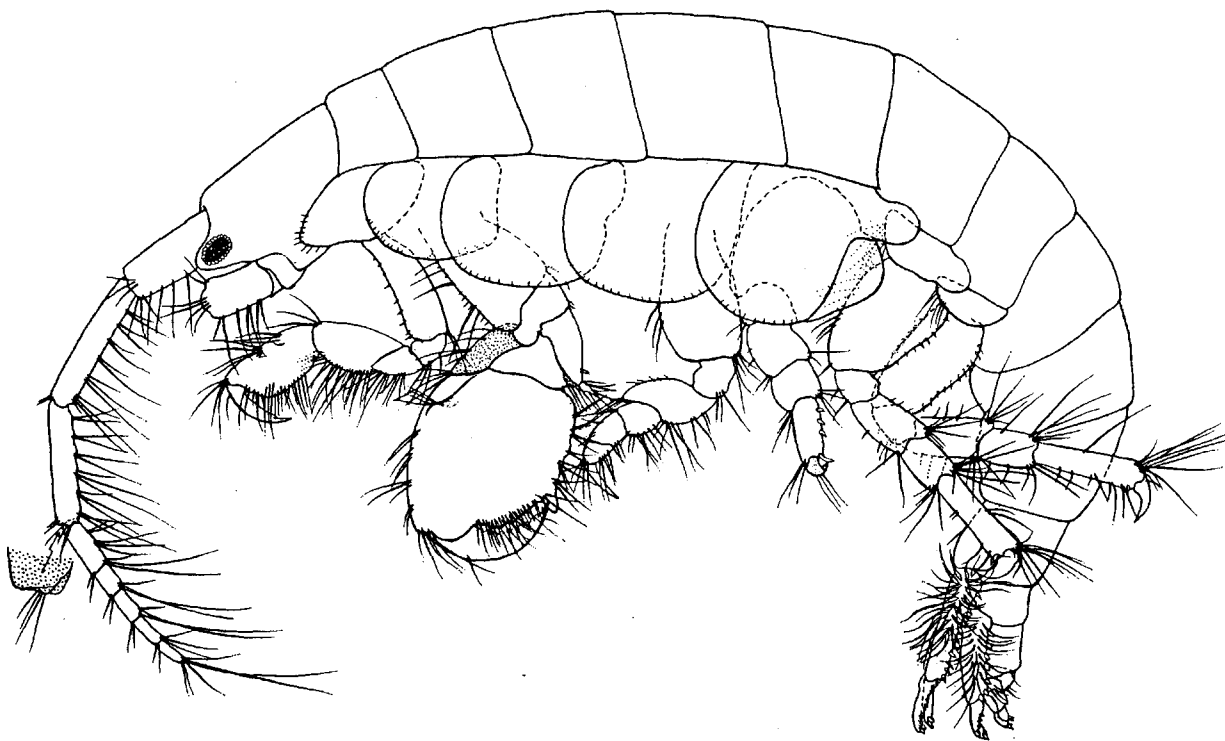


Fig. 26. *Parajassa angularis* Shoemaker. Female, 3.6 mm, sta. 4794. Lateral view.

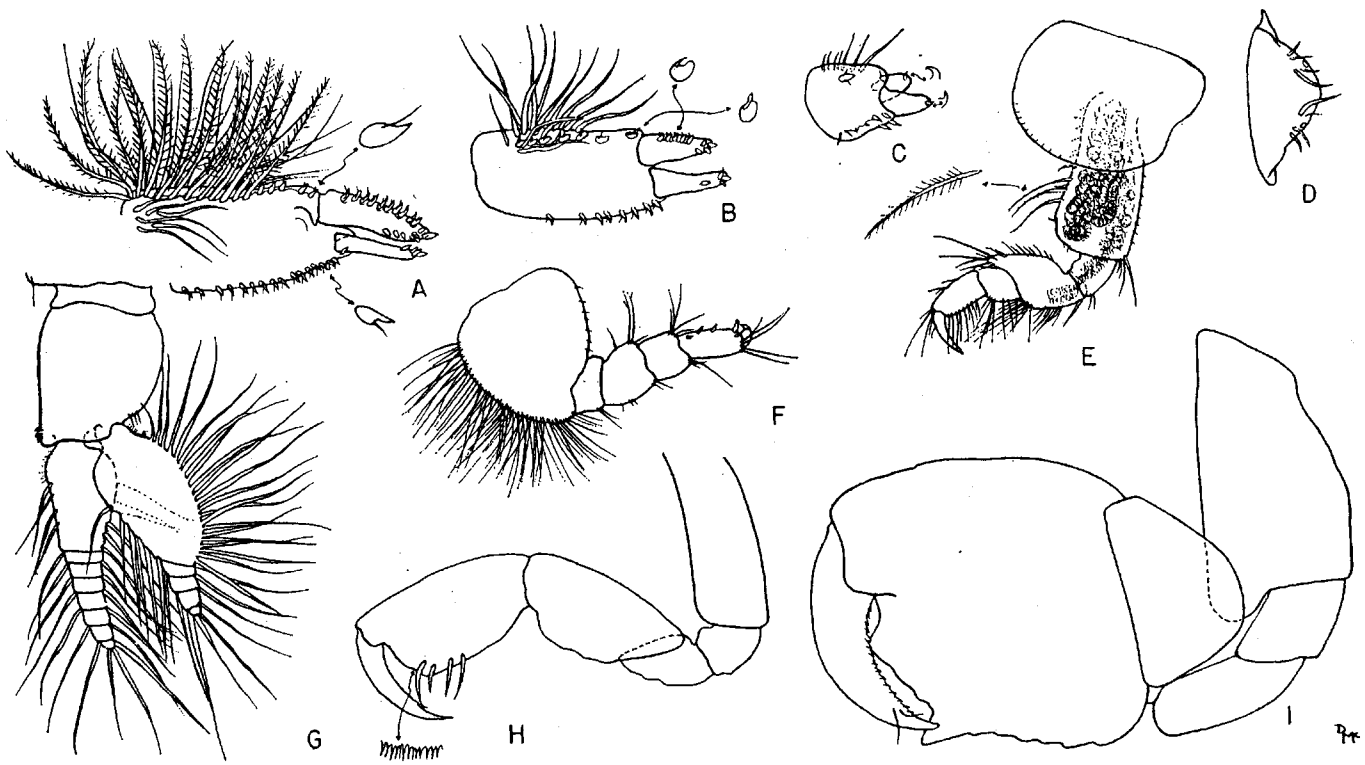


Fig. 27. *Parajassa angularis* Shoemaker. Female, 3.6 mm, sta. 4794: A,B,C, uropods 1, 2, 3; D, telson; E,F, peraeopods 1, 3; G, pleopod 1; H,I, gnathopods 1, 2, minus setae.