

Phylum Arthropoda
 Class Malacostraca
 Superorder Eucarida
 Order Decapoda
 Suborder Reptantia
 Infraorder Thalassinidea
 Family Upogebiidae

Upogebia lepta

Coloration:

Defining Characteristics:

- Postocular spine present
- Rostrum extending beyond eye stalks
- Abdominal seg 1 and seg. 2 lacking ventral spines
- Telson rectangular
- Cheliped with fixed finger about half as long as dactyl

Illustration

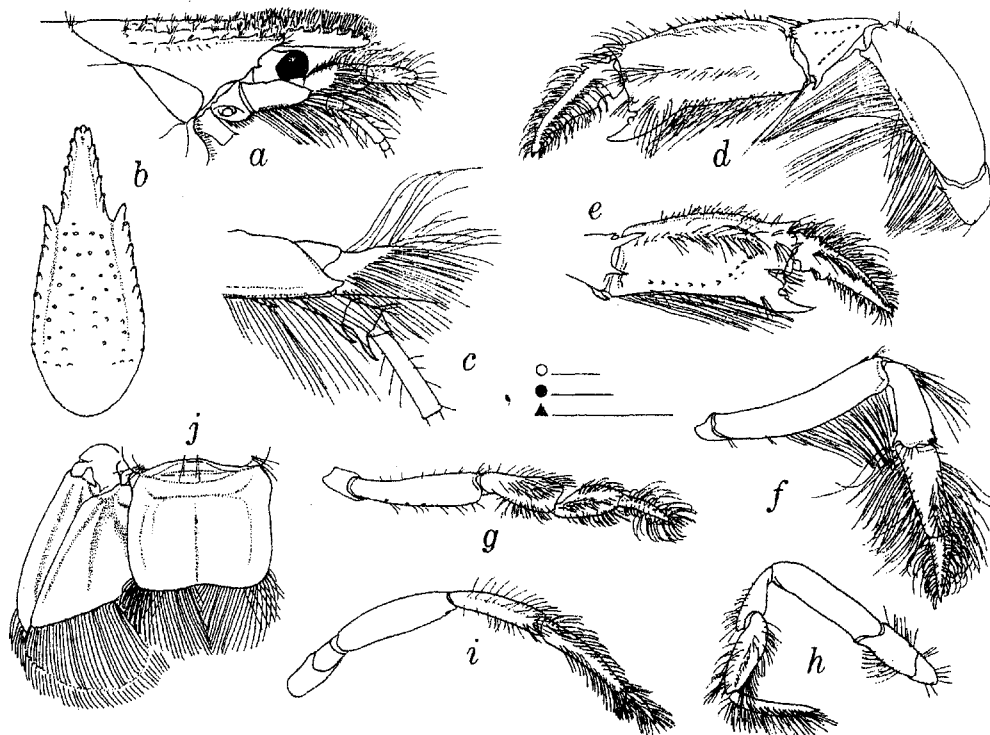


Fig. 8. *Upogebia lepta* new species. a, Cephalic region, lateral; b, Anterior carapace, dorsal; c, Peduncular articles (part) of antennules and antenna; Cheliped, d, lateral, e, mesial; f, g, h, i, Legs 2-5; j, Telson and left uropods. AHF 2540-01, Paratypes. Scales = 1 mm; ○ = d, e, f, g; ● = a, b, h, i, j; ▲ = c.