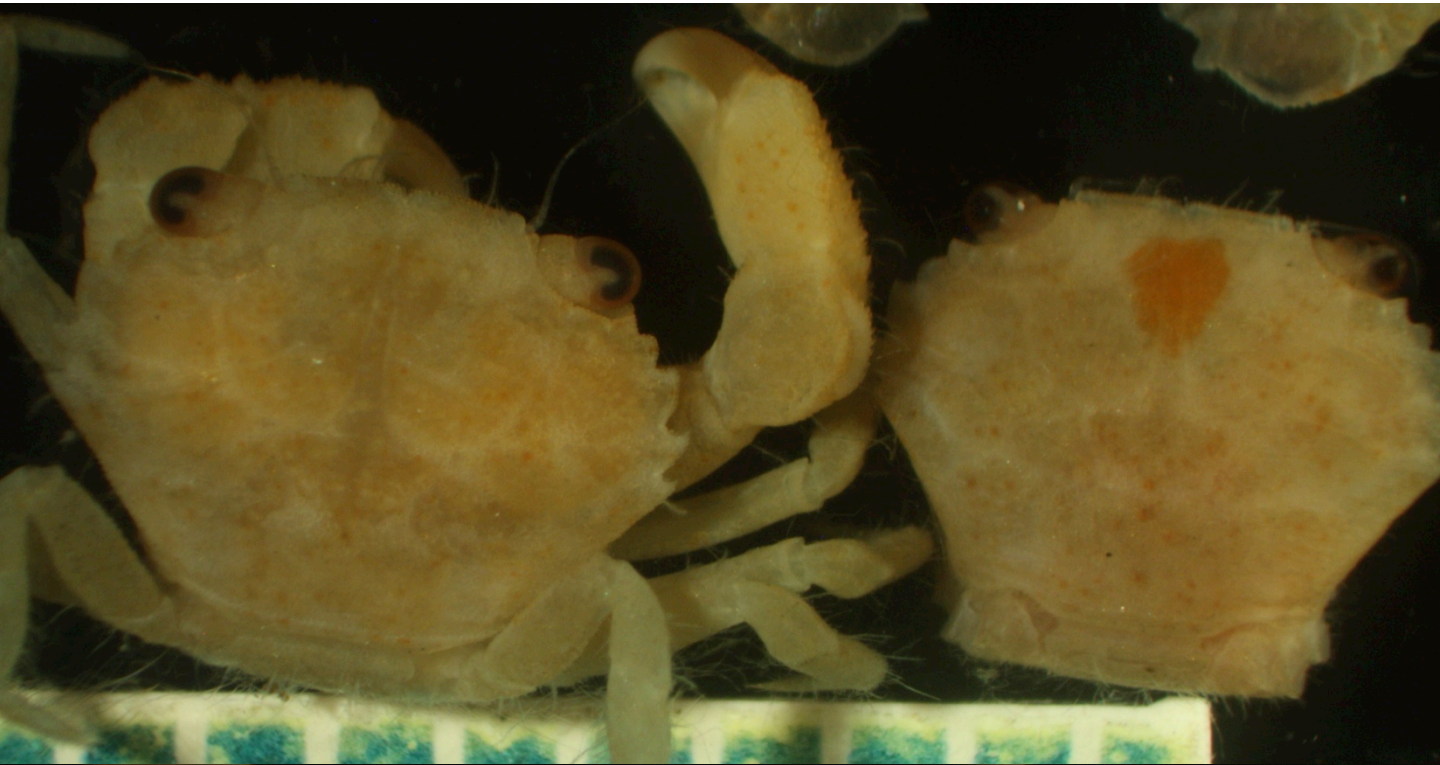


**Decapoda: Xanthidae: *Gonopanope areolata* (Rathbun 1898)**

(=Panopeidae sp1 Pasko, B18 Stn10034)

Character: (1) small xanthid crab with 3-4 antero-lateral carapace teeth; (2) chelae unequal; (3) dactyl of chelae dark, extending slightly onto mostly light colored hand; (4) carpus of chela rugose, slightly toothed; (5) walking legs long; (6) eyes widely separated, rostrum bilobed; (7) dorsal surface of carapace granular; hepatic and epibranchial lobes present; epigastric ridge well developed.



Female

Male





# Decapoda: Xanthidae: *Gonopanope areolata* (Rathbun 1898)

(=Panopeidae sp1 Pasko, B18 Stn10034)

MICROPANOPE AREOLATA Rathbun

Plate 182, Figures 1 and 2

*Micropanope areolata* RATHBUN, Proc. U. S. Nat. Mus., vol. 21, 1898, p. 588 (type-locality, off Adair Bay, Gulf of California, 11 fathoms, station 3024, *Albatross*; type, Cat. No. 21584, U.S.N.M.).

*Diagnosis*.—Carpus of chelipeds and antero-lateral portions of carapace rough. Color of immovable finger continued on palm. Otherwise near *nitida*.

*Description*.—Closely allied to *M. nitida*, with which it may be compared. Carapace somewhat narrower, front relatively narrower, first and second lateral teeth more completely united. Surface slightly pubescent, regions more distinctly marked, granulation fine but plain on protogastric, hepatic and epibranchial lobes, epigastric ridge well developed. A subhepatic tubercle. Wrists much roughened, palms finely rugose, color of immovable fingers extending well back on palms, basal tooth of major dactyl not heavy, though larger than in *nitida*. Male abdomen similar to that of *M. nitida* but last two segments shorter.

*Measurements*.—Male holotype, length of carapace 6.4, width of same 8.9, fronto-orbital width 6.7, width of front 3.4 mm.

*Range*.—Southern California and Gulf of California, to a depth of 11 fathoms.

*Material examined*.—See table, page 449.

