

Phylum Arthropoda
Class Malacostraca
Superorder Eucarida
Order Decapoda
Suborder Reptantia
Infraorder Brachyura
Family Pinnotheridae

Pinnixa tomentosa

Coloration:

Defining Characteristics:

- Carapace flat or slightly convex
- **Carapace margin smooth no flattened teeth on border**
- Carapace twice as wide as long
- Carapace not strongly calcified
- **Carapace and legs covered with a short pubescence**
- First legs much more slender and shorter than second pair of legs
- Third legs very wide
- Fourth legs much smaller than third but the same shape
- **Fingers of Chela toothless**
- Ventral margin of propodus of P4 bicarinate
- Dactylus of P4 spinous and slightly curved
- **Dactylus shorter than propodus on P4**

Illustration

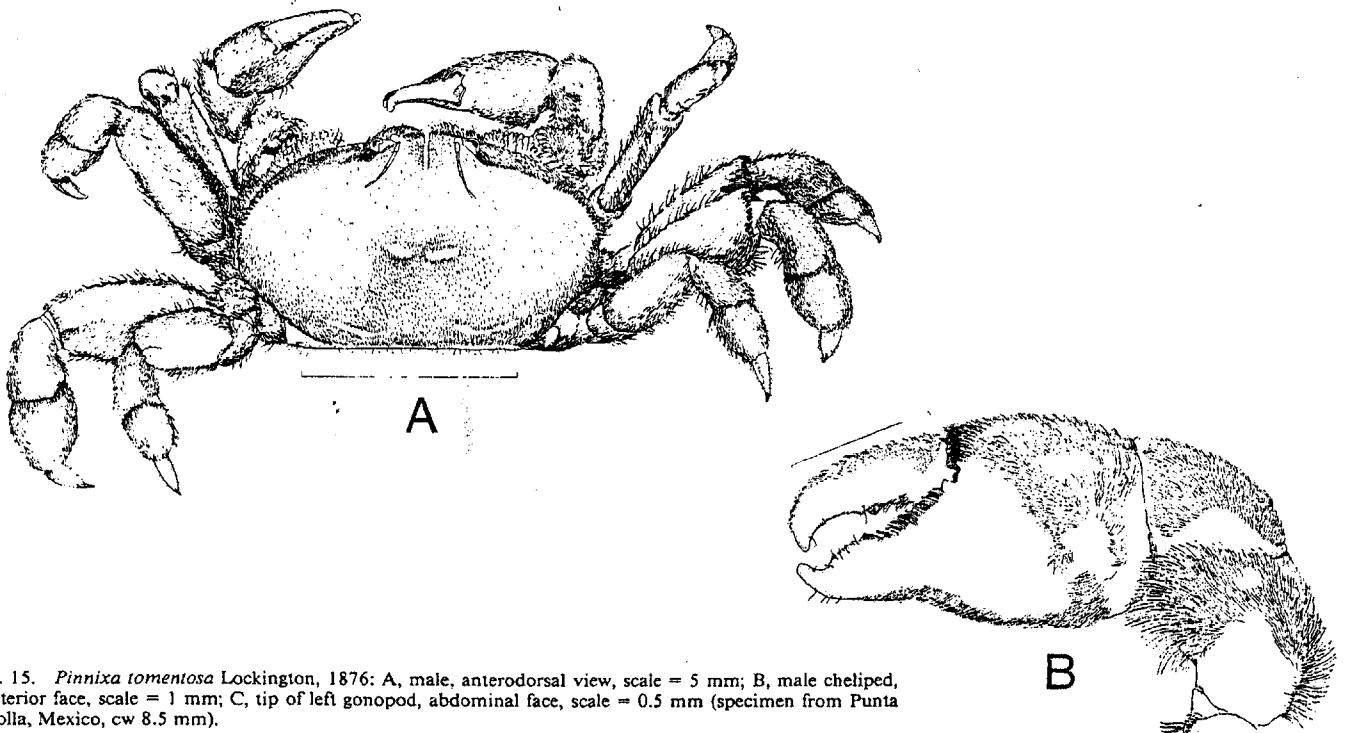


Fig. 15. *Pinnixa tomentosa* Lockington, 1876: A, male, anterodorsal view, scale = 5 mm; B, male cheliped, posterior face, scale = 1 mm; C, tip of left gonopod, abdominal face, scale = 0.5 mm (specimen from Punta Cholla, Mexico, cw 8.5 mm).