

Phylum Arthropoda  
 Class Malacostraca  
 Superorder Eucarida  
 Order Decapoda  
 Suborder Reptantia  
 Infraorder Brachyura  
 Family Pinnotheridae

***Pinnixa schmitti***

**Coloration:**

**Defining Characteristics:**

- Carapace flat or slightly convex
- Carapace more oblong than *Pinnixa franciscana*
- Carapace twice as wide as long
- Carapace not strongly calcified
- **Anterolateral aspect of carapace with granulate or serrate edge**
- **Chela fingers meet**
- **Anterior face of chela entirely smooth, without granules (males)**
- **Line of coarse granules just above ventral margin of propodus and scattered granules over rest of propodus (females and immature males)**
- Fixed finger of chela straight or curving upward, not deflexed
- **Dactylus nearly equal to or exceeding length of propodus on P4**

**Illustration**

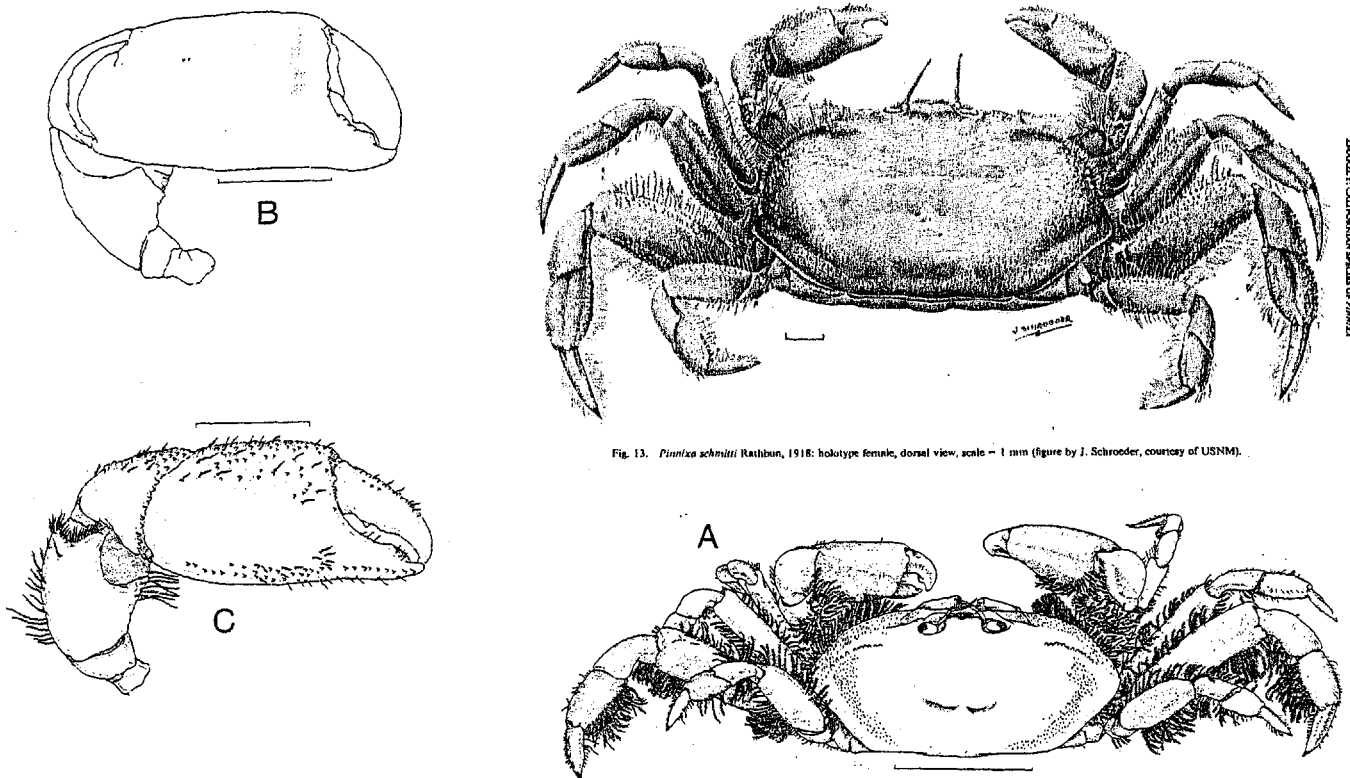


Fig. 13. *Pinnixa schmitti* Rathbun, 1918: holotype female, dorsal view, scale = 1 mm (figure by J. Schroeder, courtesy of USNM).

Fig. 14. *Pinnixa schmitti* Rathbun, 1918: A, male, anterodorsal view, scale = 3 mm; B, male cheliped, anterior face, scale = 1 mm; C, female cheliped, anterior face, scale = 1 mm; D, tip of right gonopod, abdominal face, scale = 0.3 mm. A, B, D: cw 6.5 mm, San Juan Islands, Washington; C: holotype, cw 8.8 mm, San Francisco Bay, California.