

SCAMIT Code: OC67

Date Examined: August 11, 1986
Voucher by: Ann Martin

SYNONYMY: Microrhynchus hemphilli Lockington, 1877
Inachoides (Microrhynchus) hemphilli Lockington, 1877
Podochela tenuipes Rathbun, 1898
Podochela hemphilli Rathbun, 1898

LITERATURE: Garth, J.S. 1958. Brachyura of the Pacific Coast of America Oxyrhyncha. Allan Hancock Pac. Exped. Vol. 21, Part 1 and 2.

DIAGNOSTIC CHARACTERS:

1. Carapace flattened with two medial tubercles and poorly developed cardiac tubercles (Fig. 1).
2. Postorbital spine small, sometimes more readily visible from the ventral side.
3. Distinct hepatic spine, not reaching beyond eye.
4. One tubercle on the first abdominal segment.
5. Male first right pleopod as illustrated (Fig. 2).

VARIABILITY: 1. Hepatic spine sometimes approaches strap-shape.

RELATED SPECIES AND CHARACTER DIFFERENCES:

1. Podochela lobifrons has a distinctly strap-shaped hepatic spine and two tubercles on the first abdominal segment
2. Podochela angulata has an inconspicuous or lacking postorbital spine

DEPTH RANGE: Intertidal to 165m

DISTRIBUTION: Colombia to San Miguel Island, California

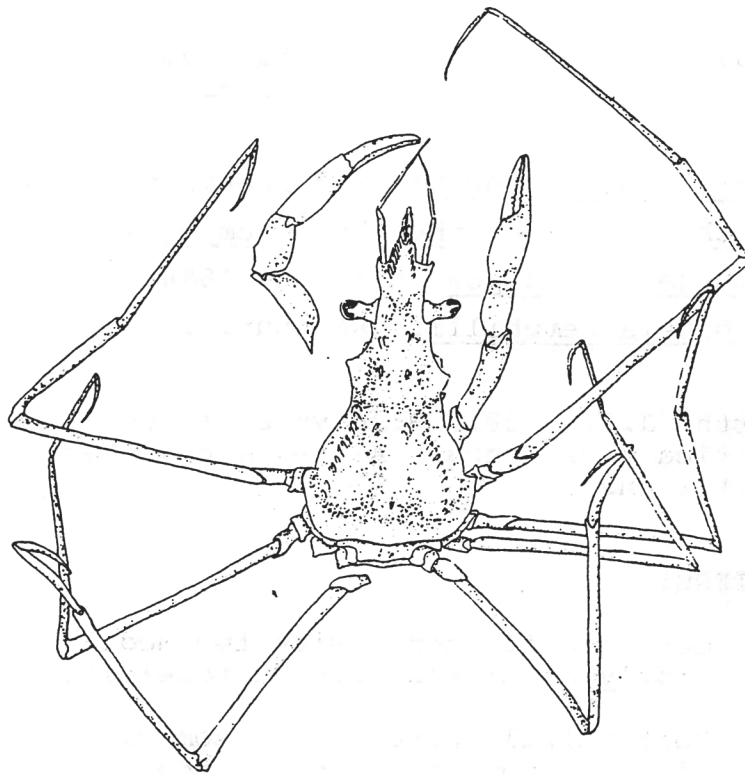


Fig. 1 Male Podochela hemphilli

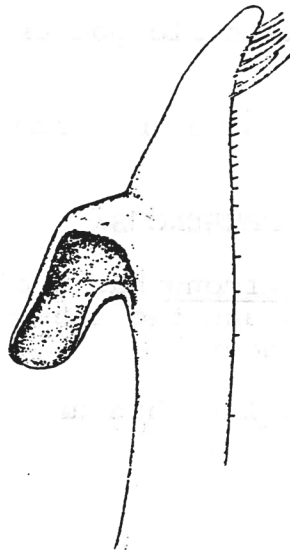


Fig. 2 Right first male pleopod (from Garth 1958).