

SCAMIT Code: HYP 63

Date Examined: August 11, 1986  
Voucher by: Ann Martin

SYNONYMY: Anasimus rostratus Rathbun, 1893  
Anasimus spinosus Schmitt, 1921

LITERATURE: Garth, J.S. 1958. Brachyura of the Pacific Coast of America Oxyrhyncha. Allan Hancock Pac. Exped. Vol. 21, Part 1 and 2.

DIAGNOSTIC CHARACTERS:

1. A small species, sexually dimorphic, males with chelipeds 3-4 times carapace length (Fig. 1), females with chelipeds 1.5 times carapace length (Fig. 2), tips of chelipeds in both sexes banded that persists in alcohol.
2. Carapace moderately convex with two medial tubercles, and prominent spines on the cardiac, gastric and brachial regions.
3. Male postorbital spine small, female postorbital spine pointing laterally.
4. Hepatic spine prominent.
5. Male pleopod as illustrated (Fig. 3).

VARIABILITY: 1. The rostrum length varies considerably.

RELATED SPECIES AND CHARACTER DIFFERENCES:

Females are similar in appearance to Inachoides laevis; however, I. laevis, a southern species ranging from La Libertad, Ecuador to Cedros Island, Baja, California, has not been reported from southern California waters (Garth 1958).

DEPTH RANGE: Intertidal to 366m

DISTRIBUTION: Santa Inez Bay, Gulf of California to Santa Rosa Island, California.

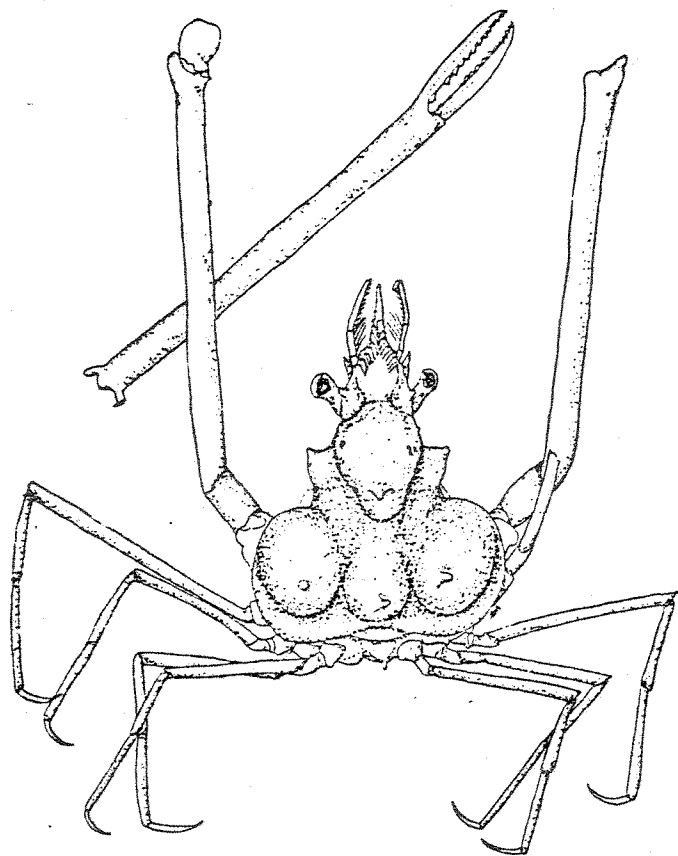


Fig. 1 Male Erileptus spinosus

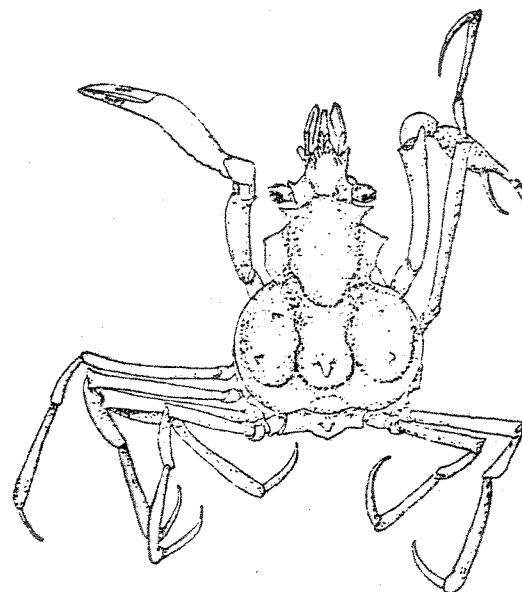


Fig. 2 Female Erileptus spinosus

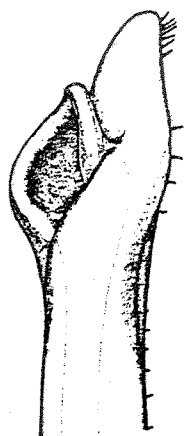


Fig. 3 Right first male pleopod (from Garth 1958).