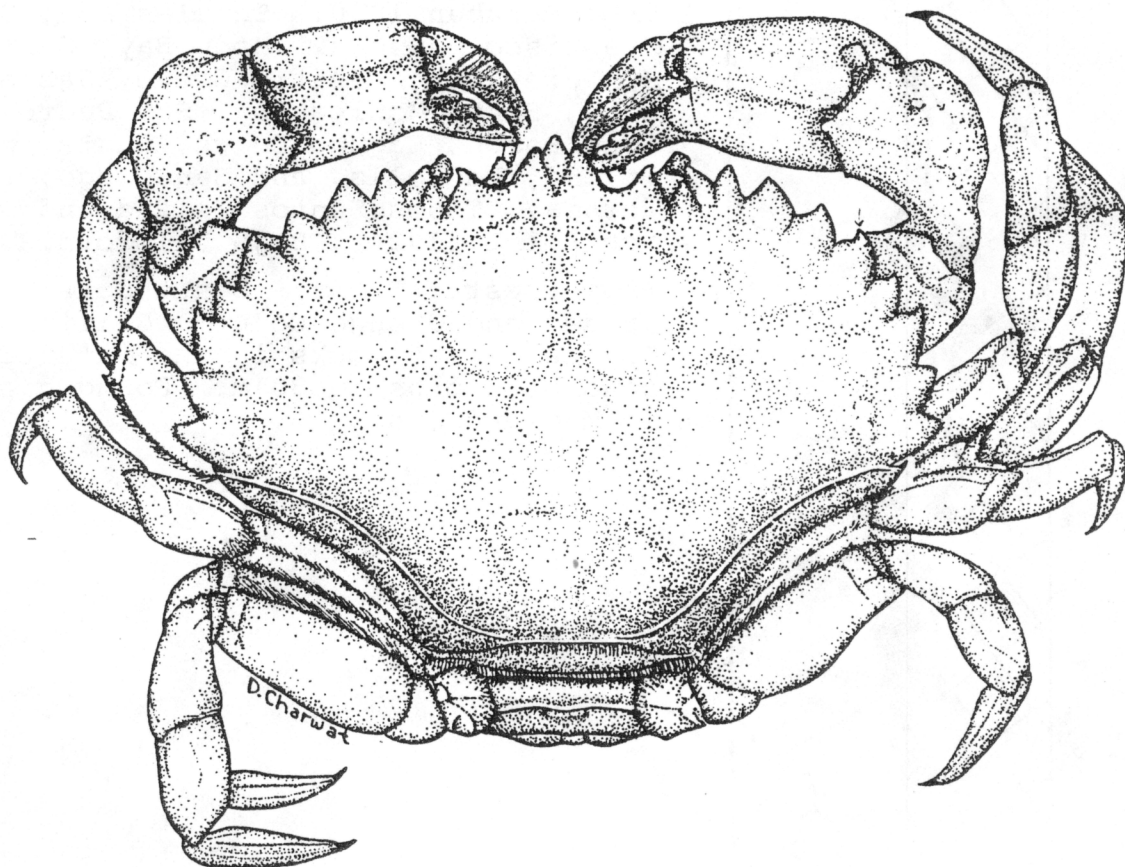


Cancer antennarius Stimpson 1856



Margin of outer orbital tooth is
smooth or tipped with spine.

Cancer antennarius Stimpson 1856

SYNONYM

Cancer antennaria Stimpson 1856.

DISTRIBUTION

From Rathbun 1930: Tomales Bay, San Francisco Bay, Half Moon Bay, Santa Cruz, Monterey Bay, Pacific Grove, Santa Barbara, Santa Monica Bay, San Pedro Bay, Long Beach, Laguna Beach, Santa Catalina Island, La Jolla, and San Diego, California. Todos Santos Island and Abreojos Point (1924), Baja California.

From Coastal Water Project data: Palos Verdes and Orange County, California. Is found near rocks in the intertidal zone at depths to 30 m. Found gravid in May and June.

