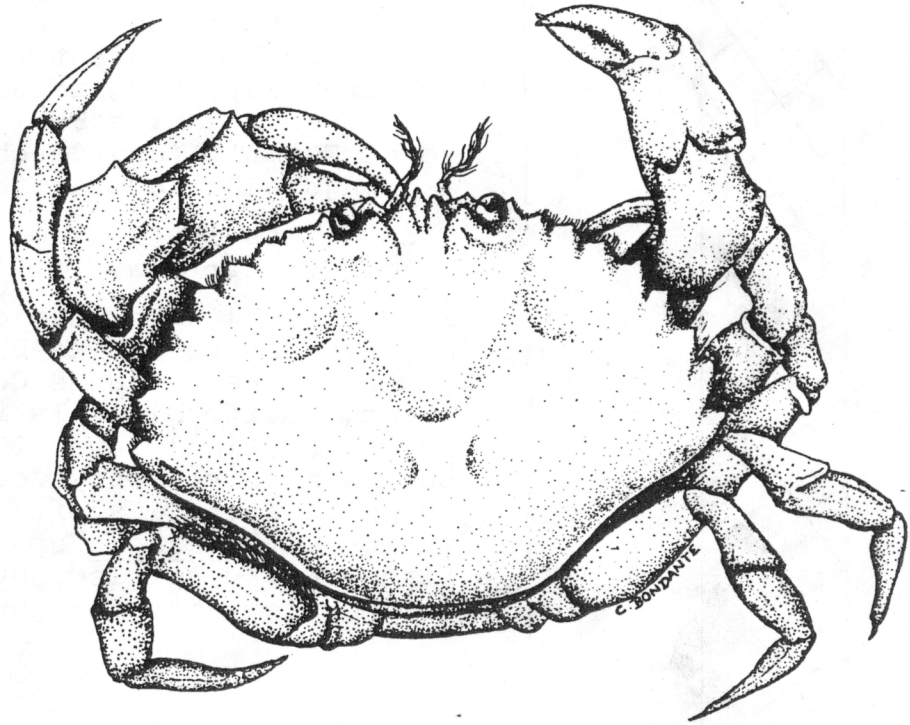


Cancer gracilis Dana 1852



110 - *Cancer gracilis* Dana 1852

Cancer gracilis Dana 1852

DISTRIBUTION

From Rathbun 1930: Alaska. Canada. Washington. Oregon. Drakes Bay, Bolinas Point, San Francisco Bay, Farallon Islands, Point Montara, Pescadero Point, Point Ano Nuevo, Santa Cruz, Monterey, Monterey Bay, Pacific Grove, Santa Barbara, Santa Monica Bay, Point Vicente, Point Fermin, Long Beach, Newport Bay, and Laguna Beach, California.

From Holmes 1900: Tomales Bay and San Diego, California.

From Coastal Water Project data: Port Hueneme, Santa Monica Bay, Palos Verdes, San Pedro Bay, Orange County, and Dana Point, California. Is found in bays and in the subtidal zone at depths to 60 m, but is more commonly found in less than 30 m of water. Is often found in association with Pelagia sp., a large jellyfish. Newly settled juveniles appear in the trawl catches generally in May.

