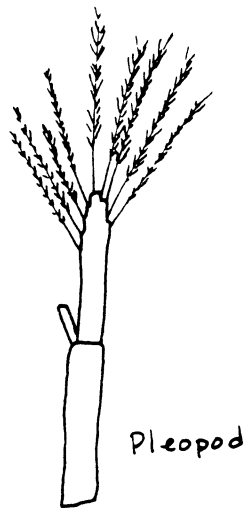
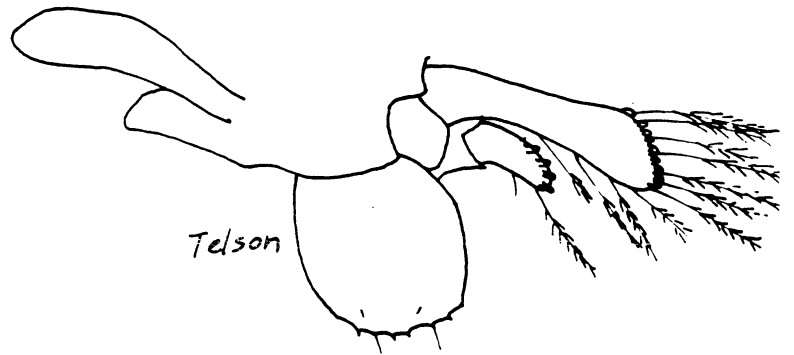
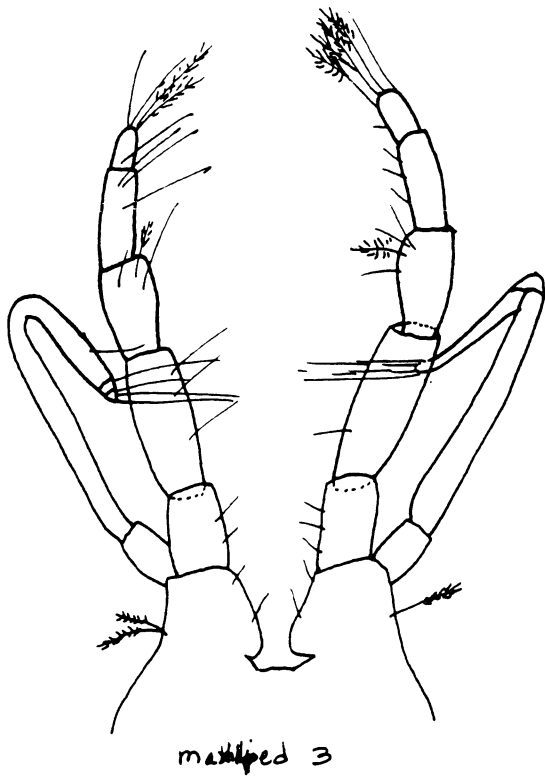
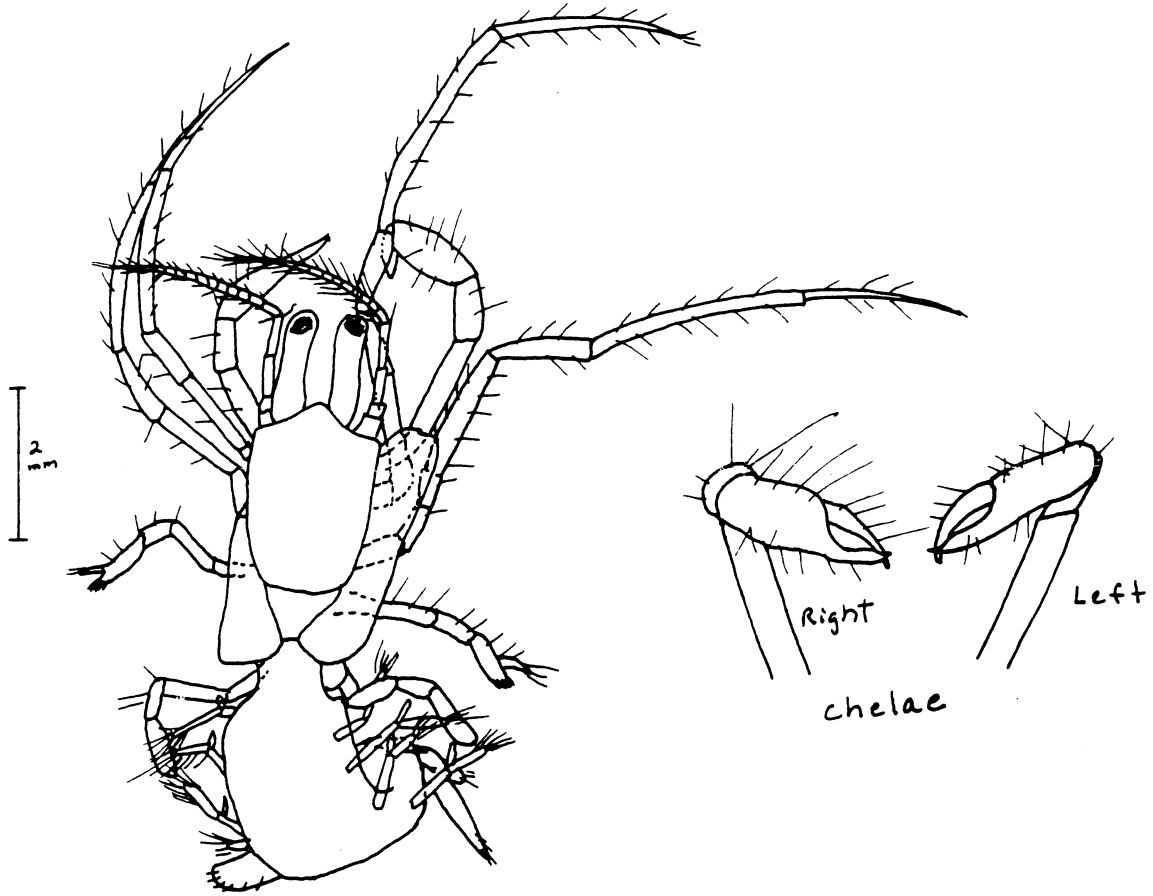


cf. Isocheles pilosus, 1st crab stage

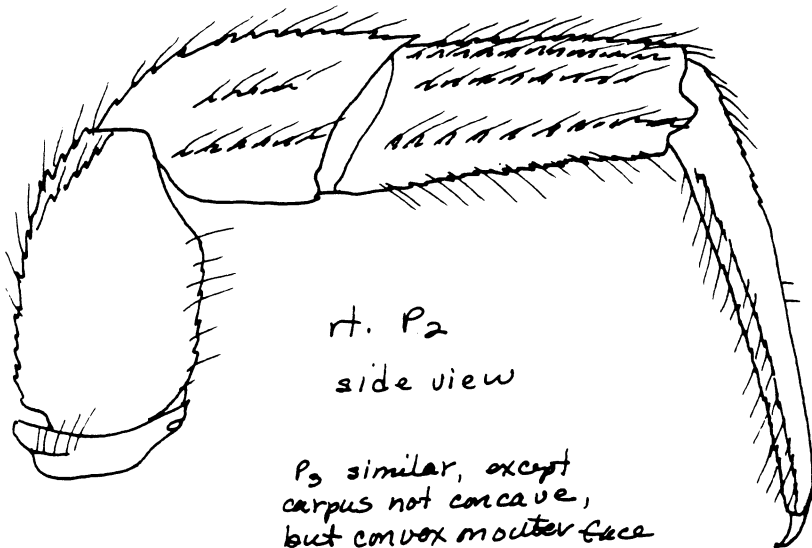
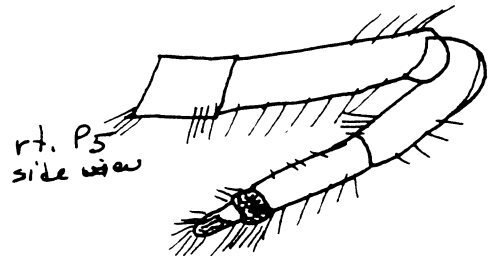
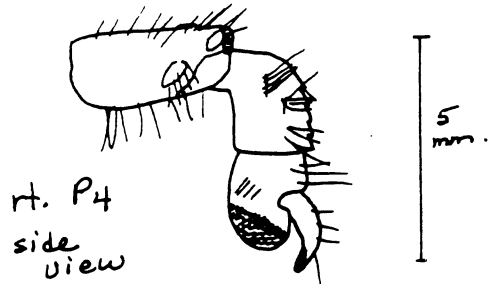
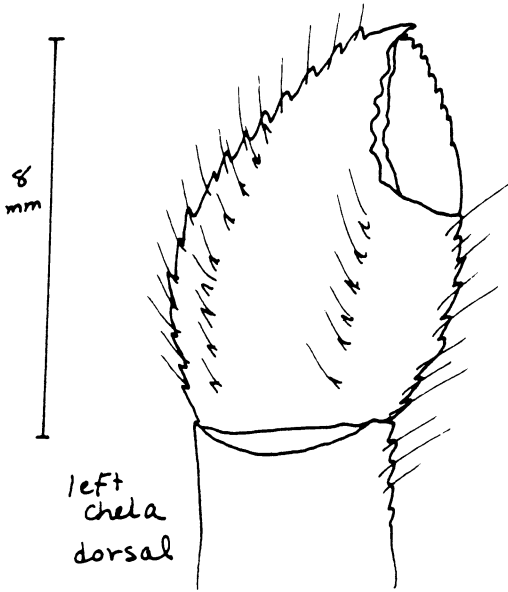
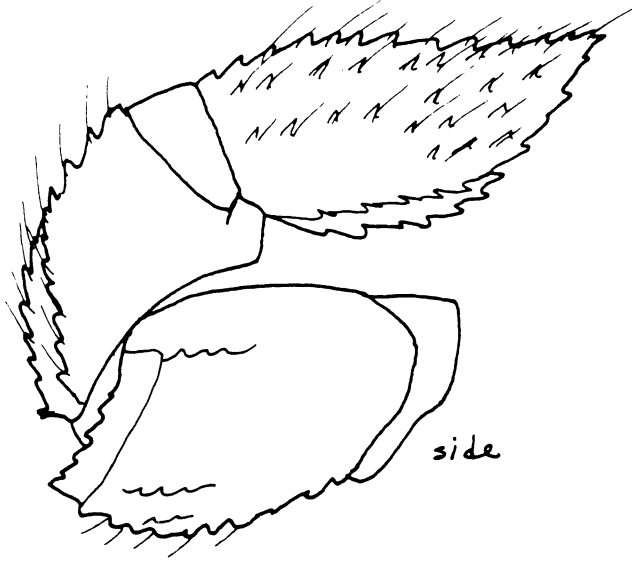
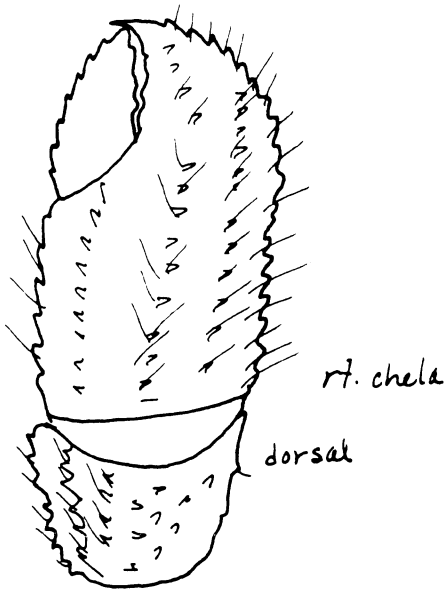


Huntington Beach NPDE  
1E I, 1F III, 1D IV  
1 Aug 89

in *Olivella baetica*  
*Neverita reclusiana*  
Epitonium, Alvinia  
other small unid  
mollusk shells

Isocheles pilosus, Adult

Huntington Beach 7E  
G 11/71  
SL = 8 mm



P3 similar, except  
carpus not concave,  
but convex on outer face

