

City of San Diego Provisional Voucher Sheet

Species: *Arcidea (Allia)* sp SD1

Authority: Barwick, 2000

Common Synonyms:

Allia sp SD1

Taxon: Polychaeta: Paraonidae

Date: April 5, 2000 (Revised April, 2006)

By: K. Barwick

Voucher Specimen(s):

Station	Date	Storage Location/#
ITP I6(1) (87 ft.)	1/12/96	DLZ/TA
Pt. Loma A14(5) (150 ft.)	10/24/89	Main/TBA
Pt. Loma A12(2) (165 ft.)	1/26/90	Main/TBA

Full Description: (based on examination of 4 incomplete specimens)

- 1 Prostomium rounded, smaller in diameter than succeeding segments, giving it a slight shrunken look in some specimens (Fig. 1)
- 2 Median antenna present, short blunt, club shaped, does not reach to setiger 1 (Fig. 1)
- 3 Branchiae begin on setiger 4; 23–27 pairs, filiform, recurved up over dorsum, the tips pointed laterally (Fig. 2)
- 4 Some neurosetae modified in posterior of animal, short curved setae with sharp tips (Fig. 4) mixed with capillaries (Fig. 3 & 5)
- 5 Postsetal notopodial lobes short, digitiform in prebranchial segments to filiform in branchial region and, finally, thin, threadlike in the postbranchial region

Illustrations: (K. Barwick)



Fig. 1 — Dorsal-lateral view of the anterior (R. Rowe)



Fig. 2 — Dorsal view of median branchial setigers (R. Rowe)

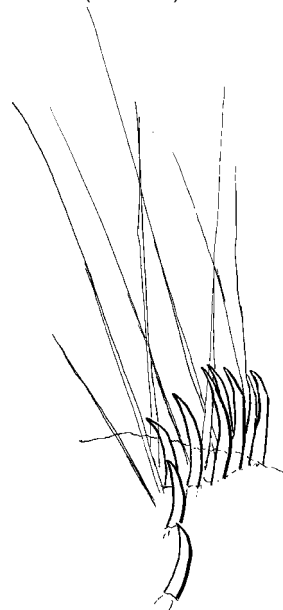


Fig. 3 — Postbranchial neuropodia with modified setae (K. Barwick)



Fig. 4 — Detail of typical postbranchial modified neurosetate (K. Barwick)

additional images on 2nd page

Comments:

Two morphs of the posterior branchial region have been observed. In one form the branchiae end abruptly with little differentiation from the preceding branchiae. In the other form the last few branchiae shorten gradually to tiny tubercles before disappearing. Modified setae found on only two of the four specimens examined.

Distribution:

Collected at: Pt. Loma A-12 (165ft), Pt. Loma A-14 (150ft.), & ITP I-6 (87ft.)

Additional Illustrations: (K. Barwick)

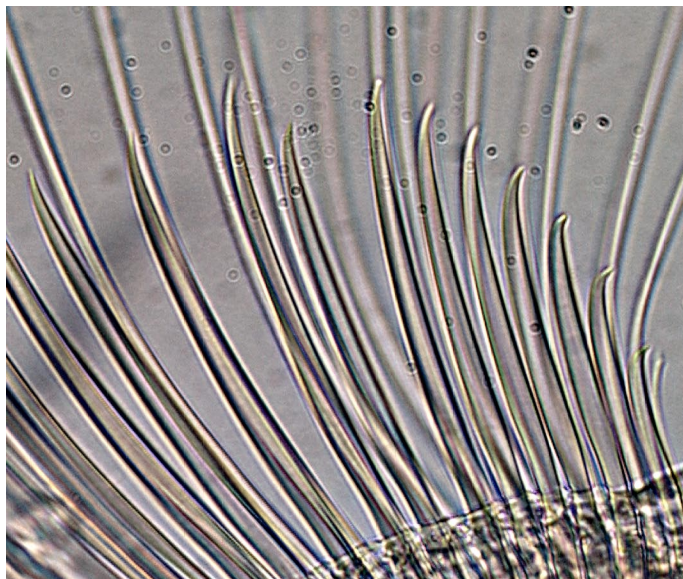


Fig. 5 — modified neuroseate [Regional Station 2729, 6JUL00, 142 ft.]
