

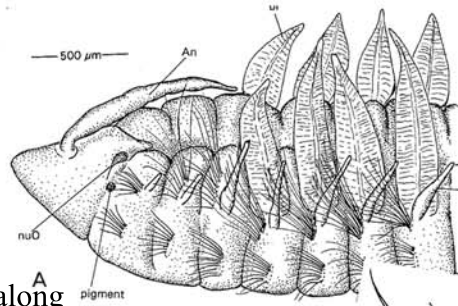
***Aricidea (Acmira) lopezi***  
 Berkeley & Berkeley 1956



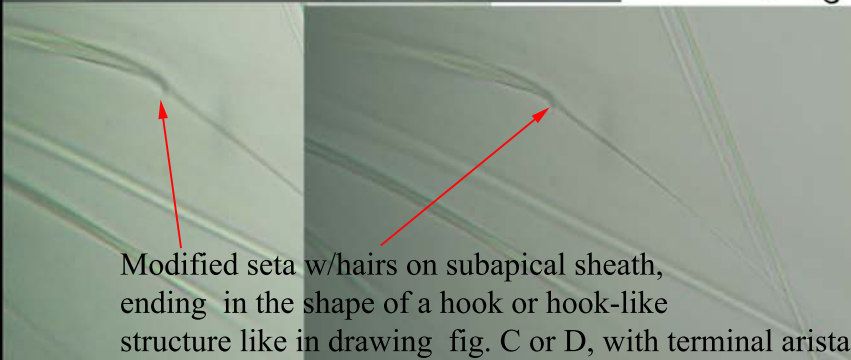
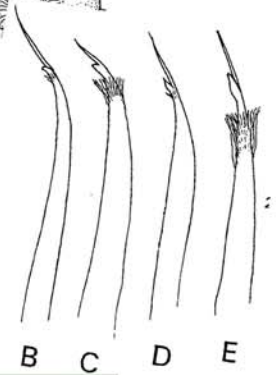
Antenna elongate extending to set. 2

Branchiae

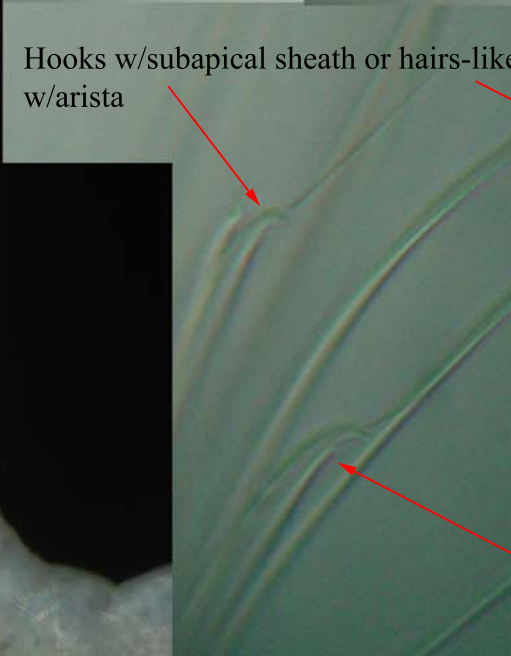
Modified seta w/hairs only along curved area similar to drawing fig. B.



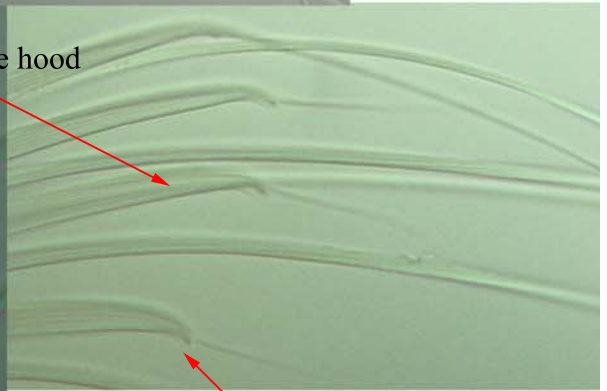
Figures from  
 Blake MMS Atlas  
 page 58. Vol. 6, 1996



Modified seta w/hairs on subapical sheath, ending in the shape of a hook or hook-like structure like in drawing fig. C or D, with terminal arista.



Hooks w/subapical sheath or hairs-like hood w/arista



Hook w/hairs and arista similar to drawing E

Hooks w/subapical sheath or hairs-like hood w/arista

CSD SBOO & PLOO  
 I9-2 2 Jan 08 30m  
 E19-2 17 Jan 08 89m  
 VRV July 08