

SCAMIT Code: AHF 29

Date examined: February 7, 1985
Voucher by: Susan Williams

Literature:

Eunotomastus gordiodes Moore, 1909, p. 278

Anotomastus gordiodes Hartman, 1947, p. 441; 1969 p. 355

Diagnostic characters:

1. Thorax with 17-18 setigers of capillary setae; first setiger with notosetae only.
2. Body long, linear, smooth and shiny, light in color; lateral suture runs from the peristomium to setiger 4/5.
3. Transition from thorax to abdomen indistinct.
4. Postmedian abdominal segments with palmate branchiae behind notopodia.
5. Pygidium with 6 cirri.

Distribution:

Central and southern California; intertidal to shelf depths; mud.

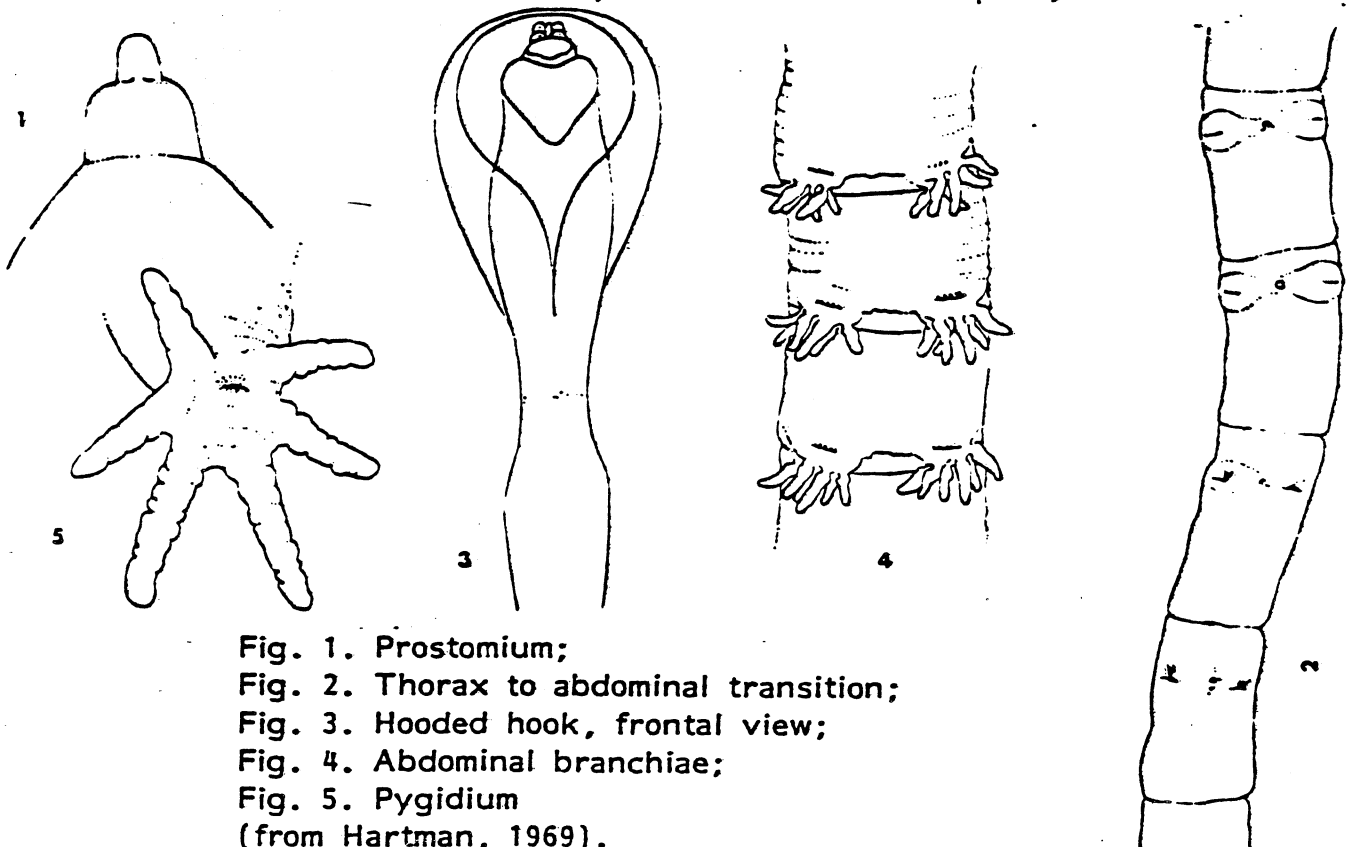


Fig. 1. Prostomium;
Fig. 2. Thorax to abdominal transition;
Fig. 3. Hooded hook, frontal view;
Fig. 4. Abdominal branchiae;
Fig. 5. Pygidium
(from Hartman, 1969).