



City of San Francisco Voucher Sheet

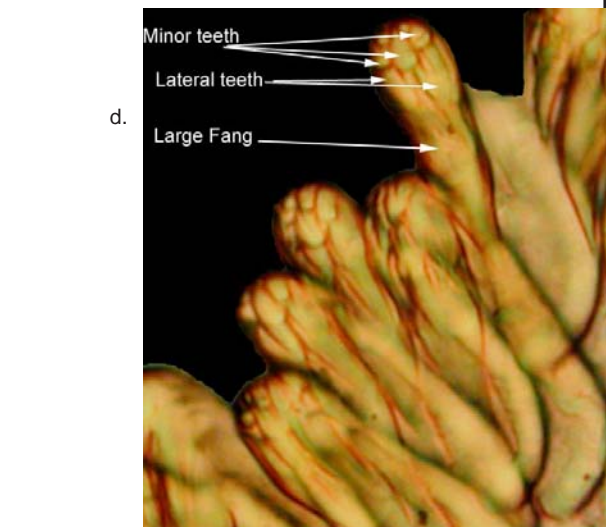
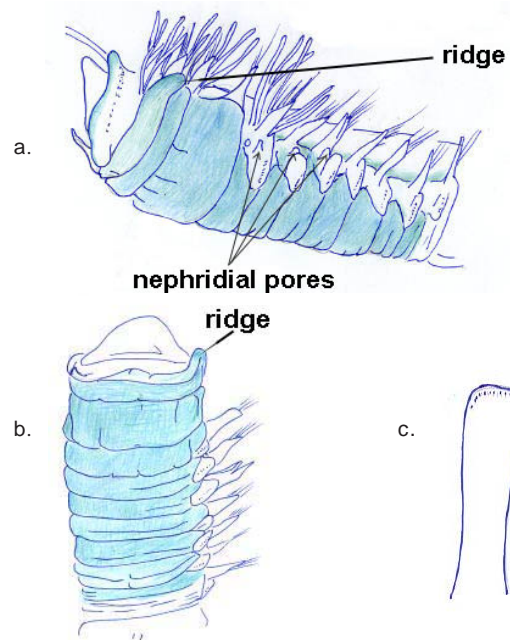
Species: *Streblosoma* sp. SF1
Authority: Dot Norris
Common Synonyms:

Voucher #: P1032
Taxa: Polychaeta: Terebellidae
Date: 14 Nov 02
By: Dot Norris
Species Code: *Streblosoma*_SF1

Characters:

- Eyes present in a long band below the oral tentacles (a) except on very large specimens.
- Dorsal branchiae in 3 bunches located on setigers 1, 2, and 4.
- Setiger 3 expanded ventrally (3 times as wide as setiger 2) see comment.
- Setiger 4 is the 1st with neurosetae.
- nephridial pores present on setigers 4, 5, and 6 and are located halfway between the neuro and notopodia (a). On some larger specimens an additional pair can be seen behind the lobes on setiger 3.
- setiger 9 ventrally retaining a slightly darker pigment than the segments surrounding it.
- Methyl Green staining - stains dark on the ventrum thru the anterior half of setiger 10 (a,b), dorsum does not stain except around the notopodia. No stain in the abdominal segments.
- Dorsal-lateral side of setiger 1 is a thickened ridge that stains dark ventral to the notopodia (noted at ridge on illustrations a and b).
- Abdominal neurosetae with a single large fang with 2 smaller lateral teeth set slightly distal to the main fang. 3 minor teeth are in a row above (mid tooth slightly larger than the the two lateral teeth) and several smaller teeth above them (d).
- Abdominal neuropodia elongated and paddle-like (c).
- Pygidium without appendages. Anus terminal, crinulated pore.
- Tube is thin and not significantly coiled.

Illustrations:



All illustrations by Dot Norris

Related Species:

Streblosoma sp. B (SCAMIT) - This species also stains dark on the ventral pads and has eyes, however it has branchae on setigers 1-3, has normal sized toracic segments (see comments), and has stain patches between the noto and neuropodia.

Streblosoma crassibranchia, Treadwell 1914 - This species stains dark dorsally and only lightly on the ventrum. It also has branchae on setigers 1-3 and has a distinctive coiled shaped tube made with coarse material.

Streblosoma bairdi (Malmgren) - Reported once from this area (Hobson and Banse 1981) however originally described from Scandinavian material and from dissimilar habitats.

Streblosoma pacifica Hilbig, 2000 - differs in the placement of the branchiae. Deep water species.

Comments:

The enlargement of the ventrum of setiger 3 and dorsal stain around the notopodia are adult characters and are not seen on smaller specimens. This makes the juveniles almost indistinguishable from *Streblosoma* sp. B.

Specimens of *Streblosoma crassibranchiata* in our voucher collection are actually this species.

References:

Hartman, O. 1961. Polychaetous Annelids from California. *Allan Hancock Pacific Expeditions* 25226.

Hilbig, B. 2000. Family Terebellidae Grube, 1851. in *Taxonomic Atlas of the Benthic Fauna of the Santa Maria Basin and the Western Santa Barbara Channel*, vol. 7 - The Annelida Part 4 (Polychaeta: Flabelligeridae to Sternaspidae), editors J. A. Blake, B. Hilbig, and P. Scott. Santa Barbara, CA: Santa Barbara Museum of Natural History. Pp. 242-44.

Hobson, Katharine D. and Karl Banse. 1981. Sedentariate and archiannelid polychaetes of British Columbia and Washington. *Canadian Bulletin of Fisheries and Aquatic Sciences* 209:145.

Voucher Information

SERIAL NUMBER	STATION	SAMPLE DATE	NUMBER OF SPECIMENS	COMMENTS/NOTES
0109119346	SWOO 32	10 Sep 01	5	4 subadults, 1 juv., well preserved, depth 20.8 m
0109129375	SWOO 71	11 Sep 01	5	various sizes with fragments, 29.8 m
SWOO A153	SWOO 34	11 Sep 00	1	adult specimens with tube
SWOO A110	SWOO 39	09 Sep 99	3	1 subadult and 2 juveniles
0209059504	SWOO 34	05 Sep 02	1	1 subadult

Revisions:

07 Jun 2006 DJN Enhance photo, add revision box and relocate voucher information.