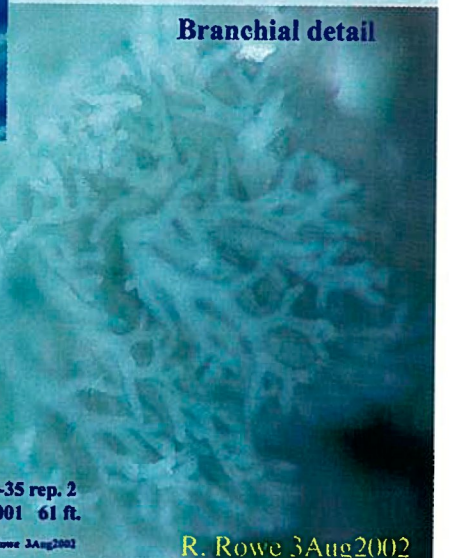
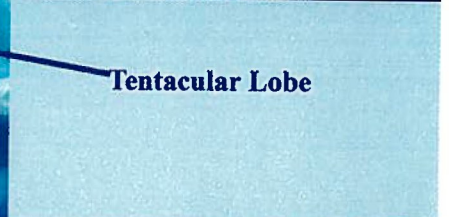
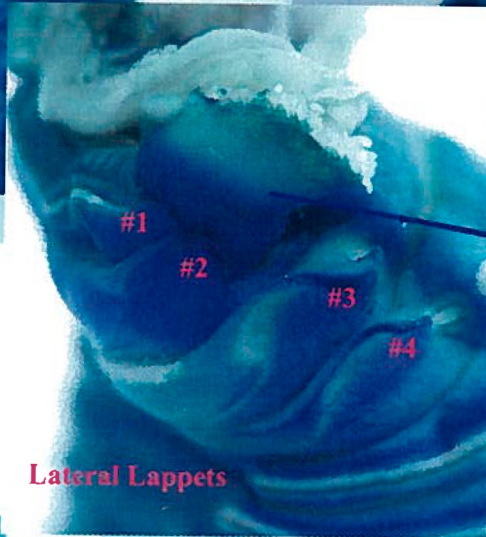
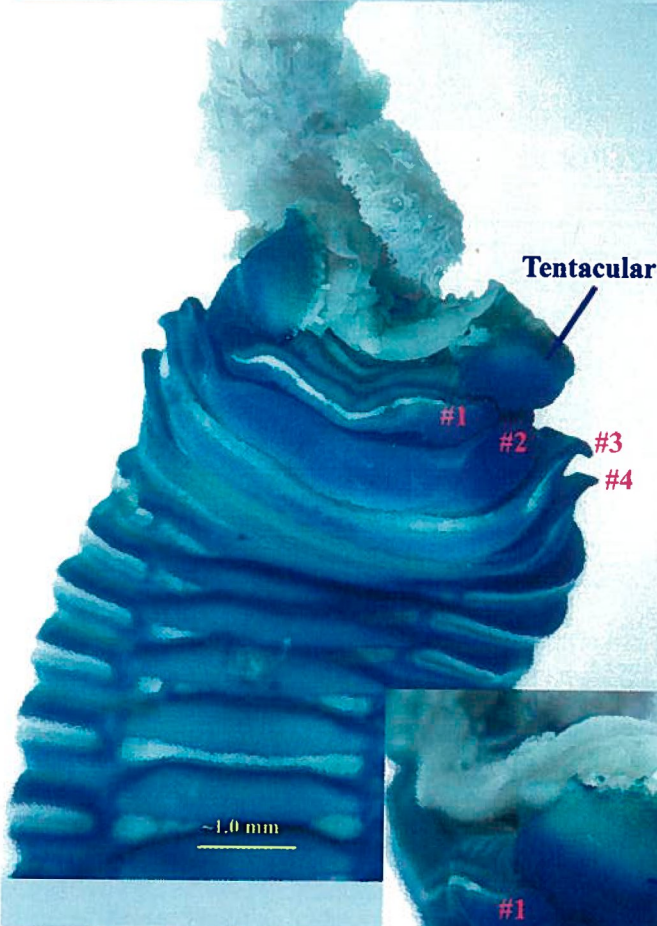


Pista wui Saphronova, 1988

Specimen: Methyl green stained
City of San Diego, ITP Survey
I-35 rep. 2 4Jan2001 61 ft.



ITP I-35 rep. 2
4Jan2001 61 ft.

Image: R. Rowe 3Aug2002

R. Rowe 3Aug2002

Pista wui Saphronova, 1988

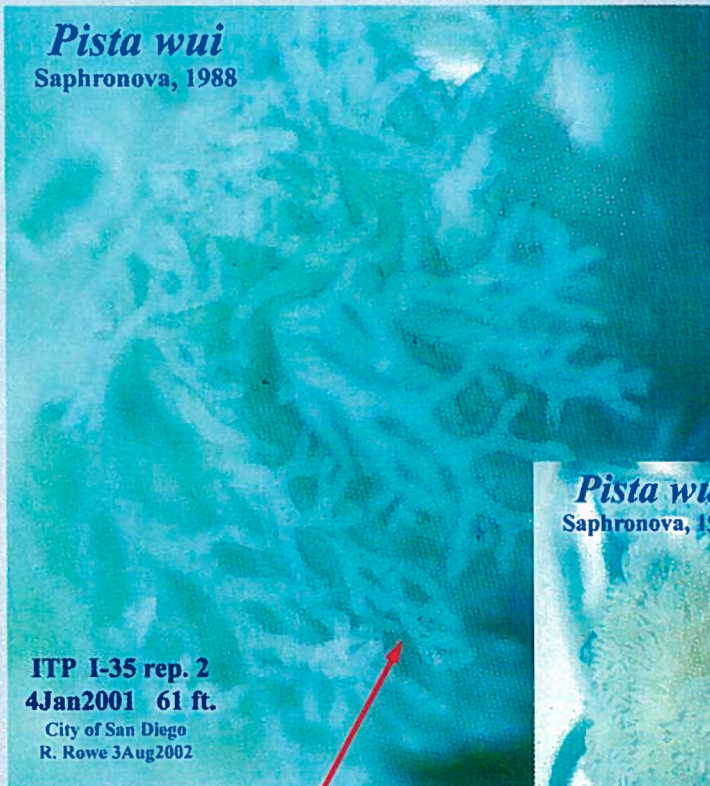
Specimen: Methyl green stained
City of San Diego, ITP Survey
I-16 rep.1 2July1996 93 ft



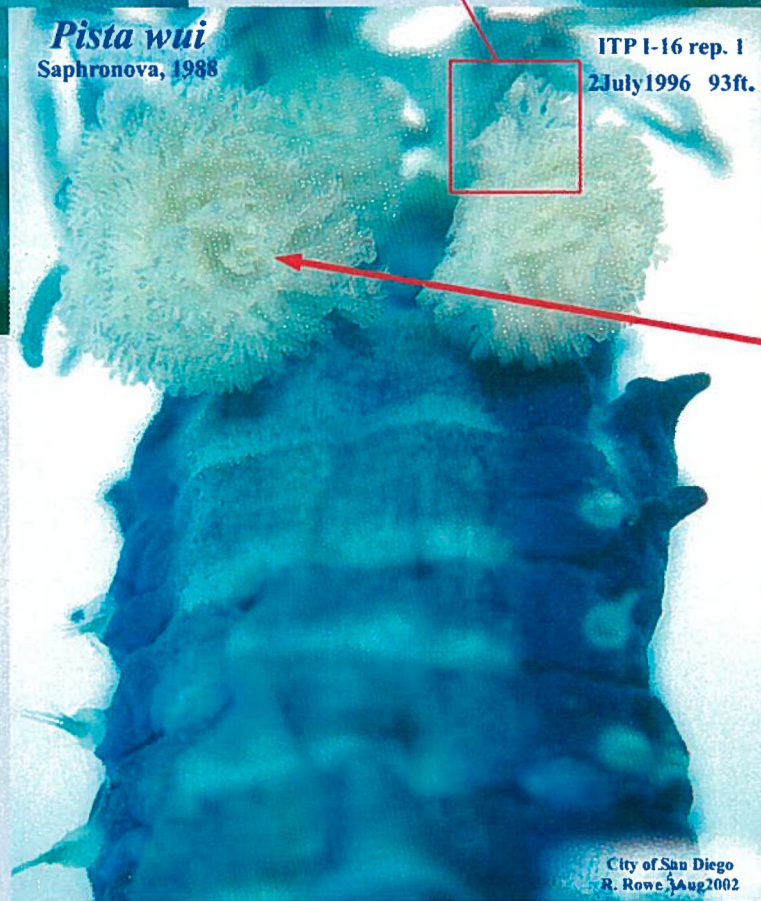
Branchiae contracted



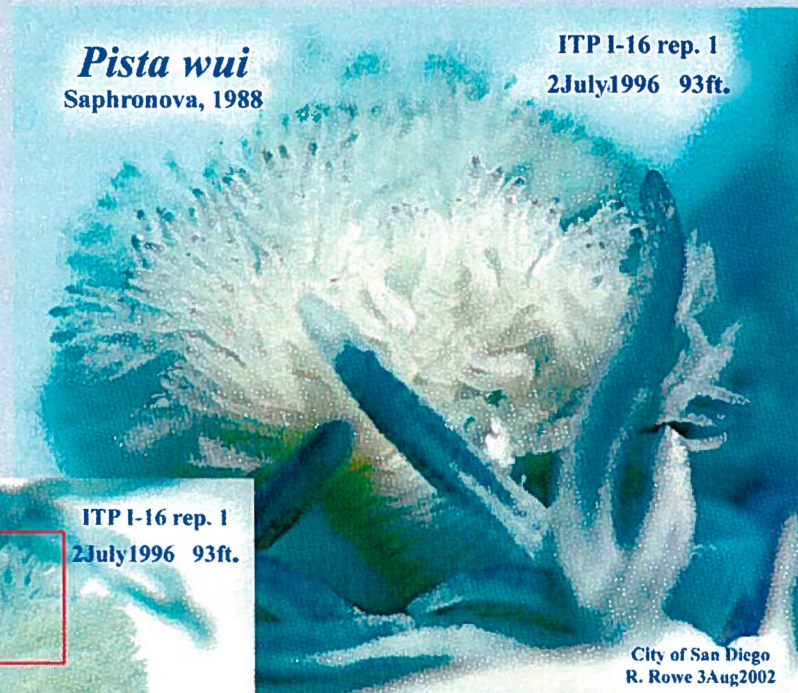
R. Rowe 3Aug2002



The terminal branching is more easily seen in less contracted specimens (e.g. ITP I-35 rep. 2 4Jan2001)



Note the spiral arrangement of the branchial branches most evident in those branchiae that are preserved in a more contracted state (e.g. ITP I-16 rep. 1 2July1996)



City of San Diego
R. Rowe 4August2002