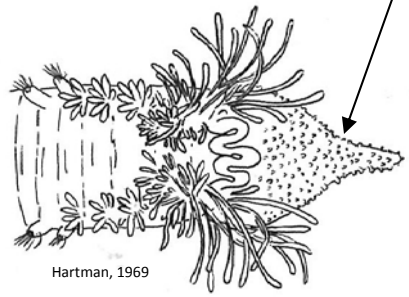


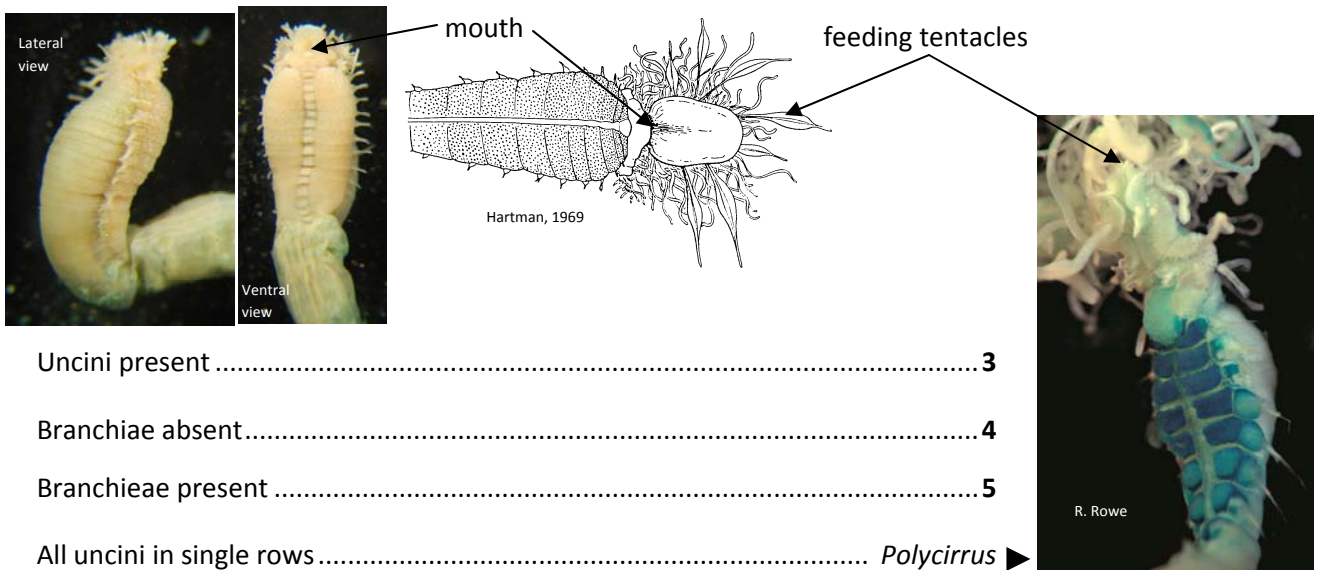
Key to the genera and some species of Terebellidae of the OCSO Ocean Monitoring Program

1. Buccal region modified as a large, non-retractile, "proboscis" .. *Artacama coniferi*



Buccal region not modified as a large proboscis.....2

2. Uncini absent..... *Amaeana occidentalis*



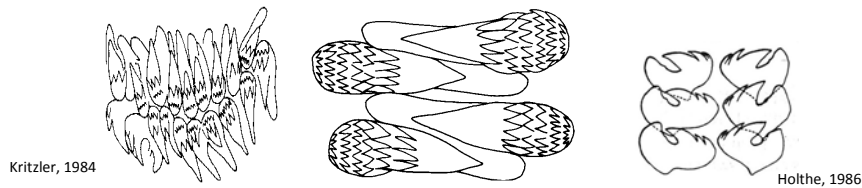
Uncini present 3

3. Branchiae absent..... 4

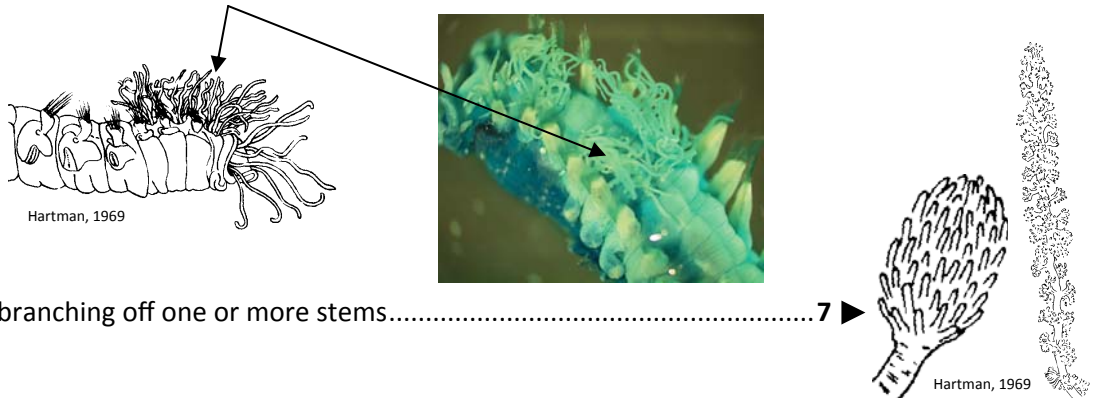
Branchiae present 5

4. All uncini in single rows..... *Polycirrus*

At least some uncini in double rows *Phisidia/Lanassa/Proclea*



5. Branchiae tufts of sessile filaments..... 6



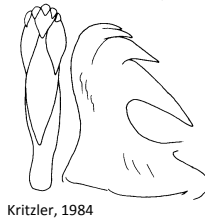
Branchiae branching off one or more stems..... 7

- 6. First notosetae on first branchial segment *Streblosoma* ▶
- First notosetae on second branchial segment *Thelepus*
- 7. Thoracic uncini pectinate *Loimia* sp A



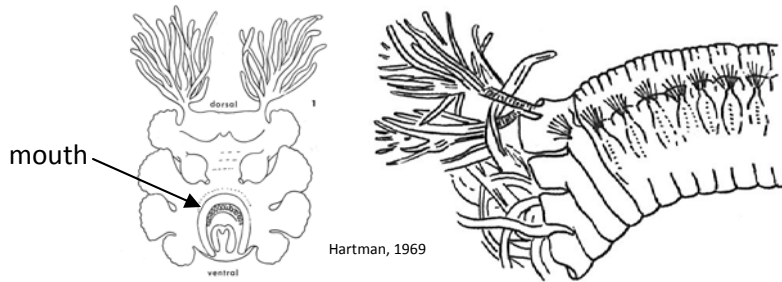
m. g. stain

Thoracic uncini avicular 8



Kritzler, 1984

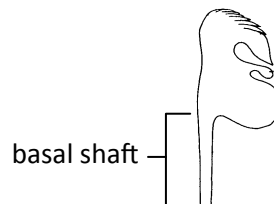
- 8. First four segments with lateral lappets modified into a plaque
 *Scionella japonica*



Hartman, 1969

Lateral lappets not modified into plaque 9

- 9. Uncini of first setiger with long basal shafts; double rows of uncini arranged face-to-face *Pista* ▶



basal shaft

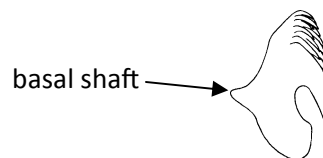
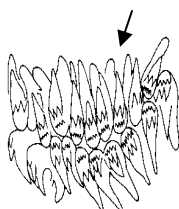


branchiae

L. Lovell

m. g. stain

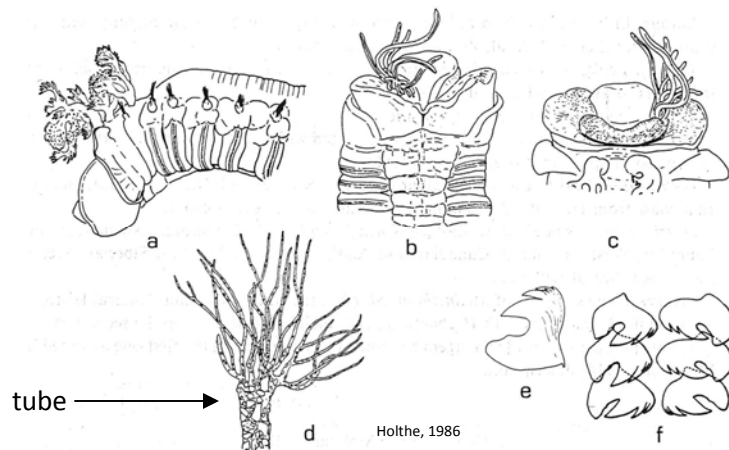
All thoracic uncini with short basal shafts; uncini in double rows arranged face-to-face or back-to-back 10



basal shaft

10. Methyl green stain pattern of bold lateral stripes down both sides of the animal

..... *Lanice conchilega*¹



Methyl green staining stripes absent..... *Eupolyornia*²

¹ Check also *Pista moorei* which has similarly staining stripes.

² Small juvenile *Pista* can be confused here, compare methyl green staining pattern with *Pista* spp. Bring to specialist.