

# ***Melinna oculata***

**Hartman 1969**

Imaged specimen from:  
City of San Diego  
Point Loma Ocean Outfall Survey  
A-10 rep. 1 18Oct1986 47m.

**Branchiae short, approximately  
1.5 times body width**

**Branchiae with cross bars or  
spots of dark pigment**

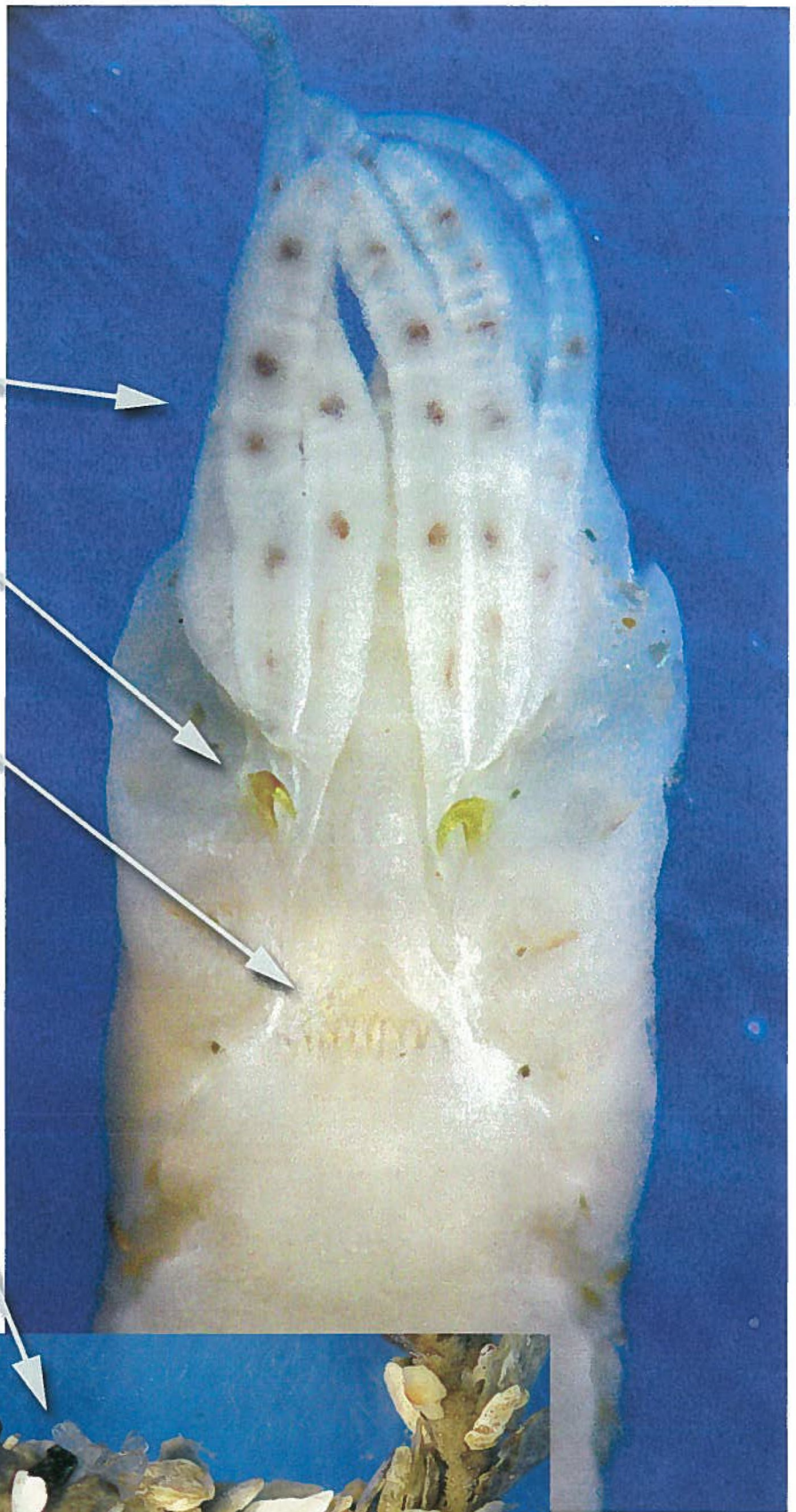
**Strongly curved nuchal hooks**

**Transverse membrane across  
approximately half of body width**

**Transverse membrane with  
approximately 10 "teeth"**

**Shallow to mid depth species**

**Tube constructed of coarse  
sediment, shell hash, and  
organic debris**



1.0 mm grid



Images by R Rowe  
27April 2006