

PROVISIONAL SPECIES VOUCHER SHEET

Provisional Name: *Cirriformia* sp B

Taxon: Cirratulidae

Taxonomist: R. Rowe

Authority: fide Harris, 1999

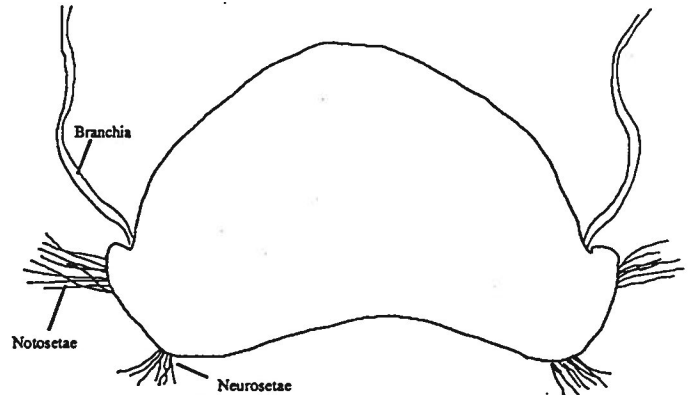
Date: 13Sept1999

Common Synonyms:

Specimen(s)	STATION	DATE	DEPTH	STORAGE	LOCATION	VIAL#
Bight98[1 Ant. Frag (~65 setigers)]	2349	7/22/98	31.7m	Bight98 voucher		981029

Characters: (Based on a single anterior fragment of ~70 setigers, ~6mm max. width, and ~9mm length)

1. Tentacular cirri on setiger 9-10. Those segments contracted in length making exact placement and counting of the scars of the cirri difficult.
2. Neurospines begin on approximately setiger 35. They are small, yellow-bronze, and number approximately 4 per fascicle. The similar notospines begin on approximately setiger 60 and there are 4 in the last fascicle on this anterior fragment. The slightly curved noto- and neurospines alternate with long, thin, finely serrate-edged capillaries.
3. The triangular, terminally rounded prostomium is contracted for about half its length into the peristome. The peristome has roughly four pseudoannulations.
4. This specimen is white with a domed dorsum and short, close set segments. The first six setigers are nearly twice the length of those that follow.
5. There is a single branchia set into a groove above each notosetal fascicle. All branchiae in this anterior fragment are inserted at a similar distance above their corresponding notosetal fascicle.

Illustrations:

Crude sketch of cross section through setiger 30

Related Species & Other Comments:

This species was included in the *Cirriformia* specimen character summary and Northeast Pacific *Cirriformia* tables sent by Leslie Harris as attachments to a broadcast email (taxon@SCCWRP.org) on May 21, 1999. Her specimen was reported from 59 meters depth in mud or sand from Orange County, California. The specimen described on this sheet is from a benthic sample collected off of Solana Beach in North San Diego County.

References: