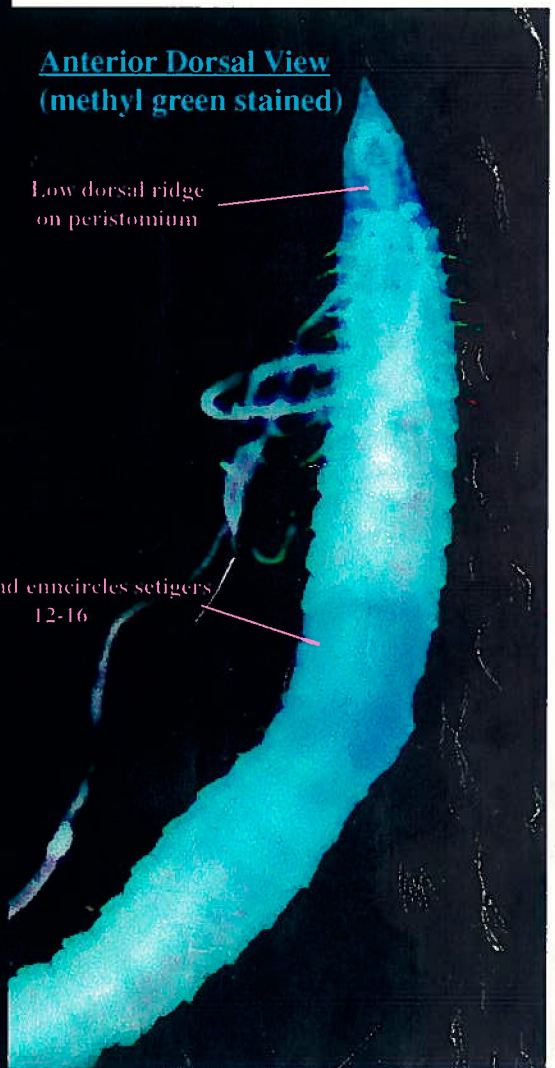
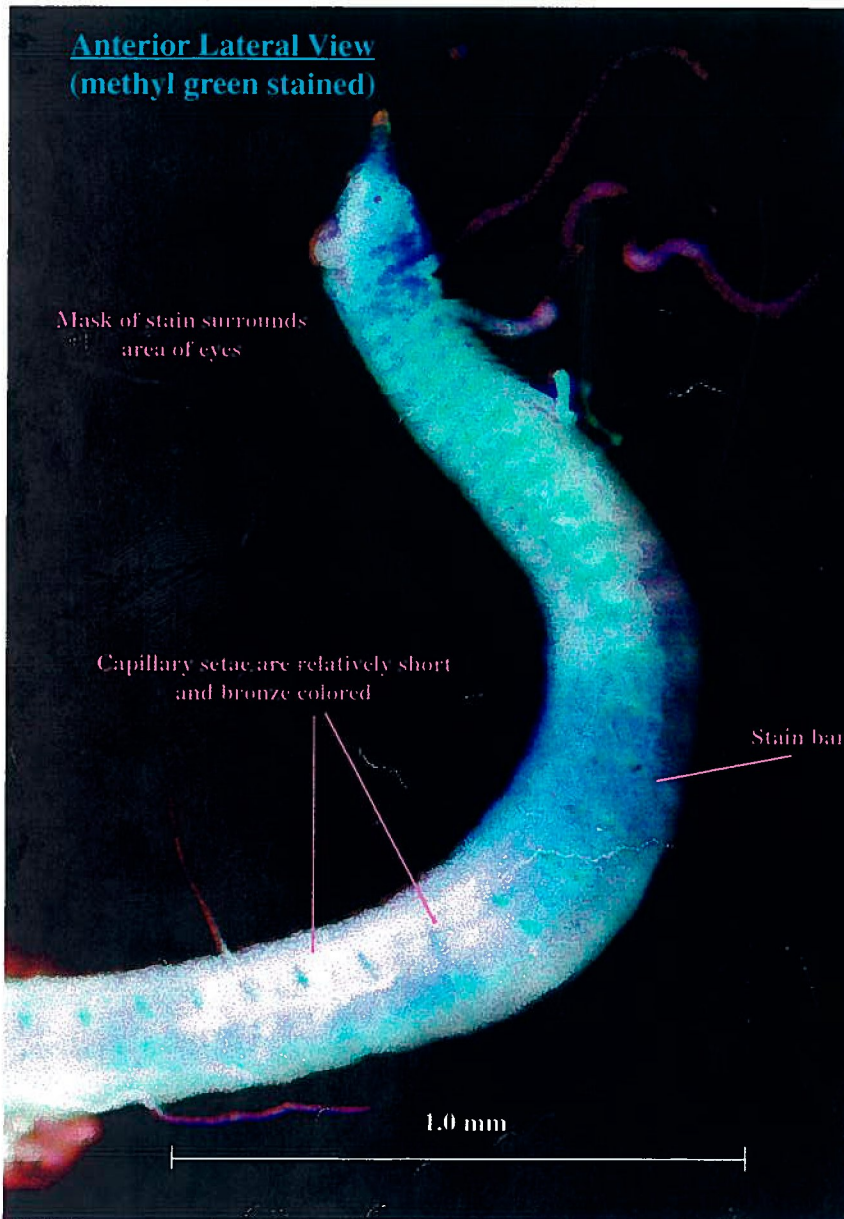
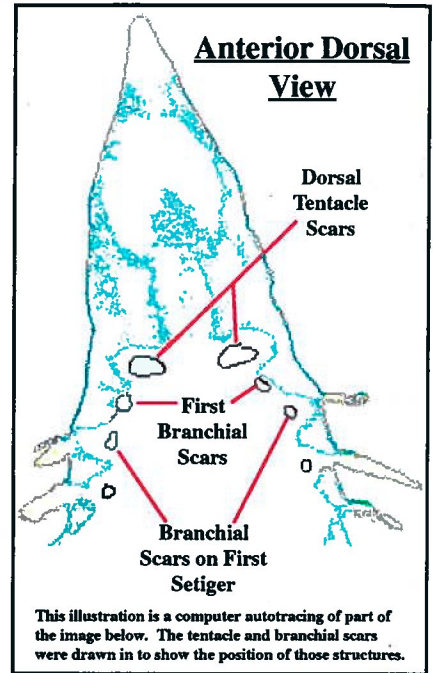


Chaetozone sp SD 3 fide Rowe, 1997

This species has been collected at several locations off of Pt. Loma and at a Bight 98 station north of Santa Cruz Island

1. Long pointed prostomium often directed upward
2. Long narrow worm, only slightly thicker in midthoracic region
3. Small, dark eyes usually visible at anterior of peristome
4. Neuropodial spines start on setigers 40-65
5. Capillary setae progressively thicken and lose their tapered, finely pointed distal ends, eventually becoming spines posteriorly
6. Anterior capillaries relatively short and bronze colored at base, and many are broken off in the preserved material observed
7. Segments are relatively long and uncrowded throughout
8. Dorsal tentacles on second pseudoannulation in front of first setiger and first branchiae on pseudoannulation in front of the first setiger (see Anterior Dorsal View figure)
10. No posterior ends have been observed and distribution of posterior spines has not been seen



These images are of a specimen from the City of San Diego Outfall Monitoring Station B-13 rep. 1, 383 feet depth, 3July97

The City of San Diego Ocean Monitoring Program
R. Rowe 11July99