



City and County of San Francisco Voucher Sheet

Voucher #: P690

Taxa: Polychaeta: Spionidae

Species: *Spiophanes berkeleyorum*

Original Prep. Date: 30 Apr 2008

Authority: Pettibone 1962

Prepared By: Dot Norris

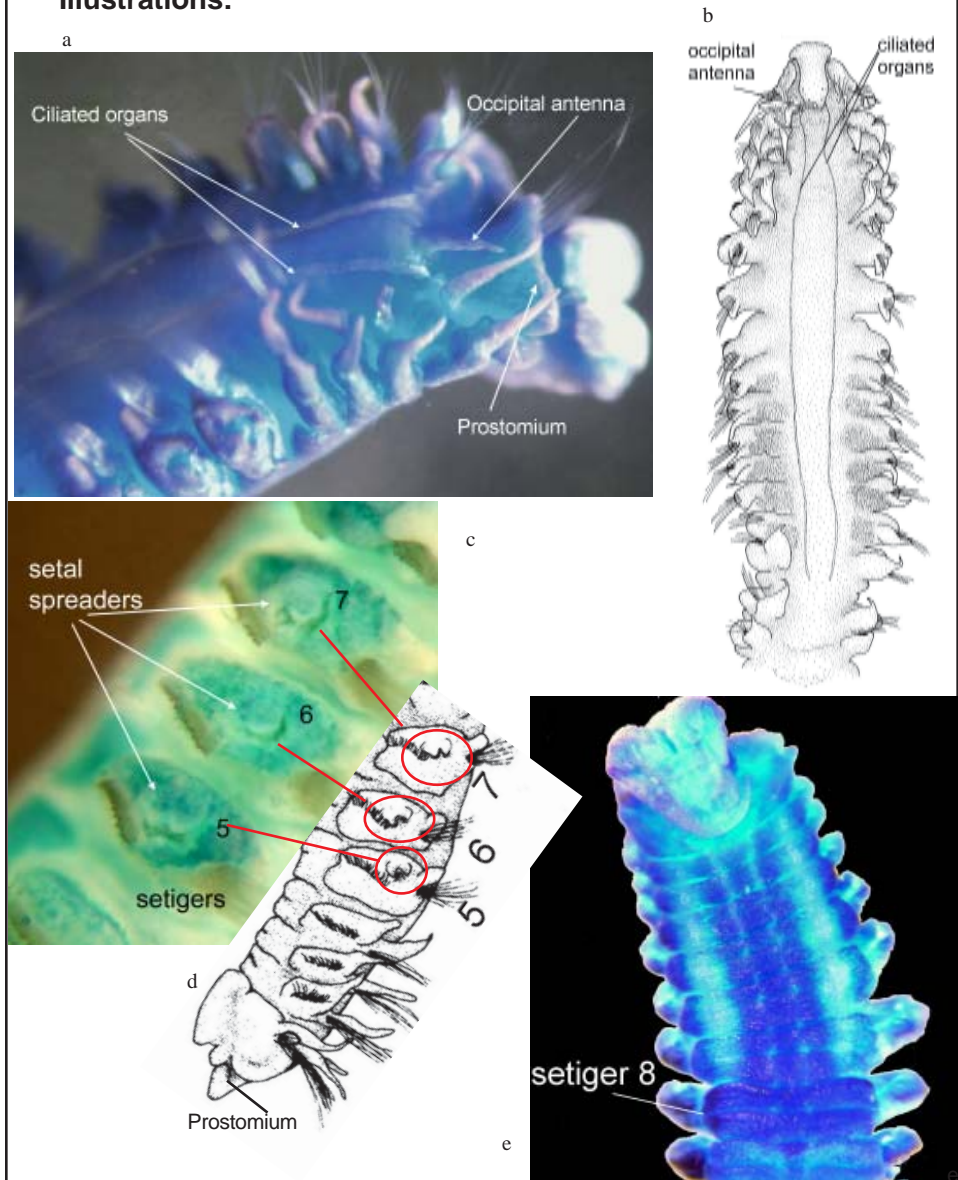
Common Synonyms:

Species Code: SPI_BERKELEYORU

Characters:

- Bell-shaped to triangular prostomium with cirriform occipital antenna present (a & b)
- Methyl-green stain pattern is dark on the midventrum of the thoracic segments and stains the complete ventrum on setiger 8 forming an upside down T-shaped pattern (e). Dorsum stains dark on head and edges of the parapodia (a).
- Setal spreaders on setigers 5, 6 and 7 are 1+2 type (one lobe anterior, two lobes posterior) (d), on setigers 9-14 they are simple slits (not illustrated). These are most visible on a stained specimen (c and d).
- Neuropodial hooks are hoodless and begin on setiger 15.
- Dorsal ciliated organs are narrow ciliated grooves (a) which converge on setigers 3 to 5, then gradually diverge to setiger 15 (best seen on a stained specimen) (a & b).

Illustrations:



a, c, e photographs by D. Norris of specimen in vial #2
 b and d adapted from Meisner 2005 (d was re-oriented to correspond to illustration c).

Additional Information:

(Meisner 2005)

NE Pacific Ocean from Alaska to California, prefers sandy substrates in less than 200 m depths.

Spiophanes berkeleyorum (continued)

Similar Species:

Spiophanes duplex (Chamberlin 1919)- no occipital antenna present, methyl green staining pattern on the ventrum in irregular patches, not forming a t-shaped pattern.

Spiophanes kimballi Meisner 2005 - Methyl green stain restricted to notopodial post-setal lamella, chaetal spreaders are 2+3 type, dorsal nuchal organs converge on setiger 1 to 2 and remain parallel in mid-dorsum extending only to about setiger 13 (not seen at SWOO stations yet, however has been reported in similar, but deeper, habitats in California).

Comments:

Spiophanes berkeleyorum is a very common species in the offshore SWOO samples.

References:

Blake J. A., Family Spionidae Grube, 1850. in: Blake J. A., Hilbig B., Scott P. H., eds. *Taxonomic Atlas of the Benthic Fauna of the Santa Maria Basin and Western Santa Barbara Channel*. Volume 6. Santa Barbara, CA: Santa Barbara Museum of Natural History. Chapter The Annelida, Part 3. pp. 418.

Light W. J., 1978. Spionidae (Annelida: Polychaeta) from San Francisco Bay, California: a revised list with nomenclatural changes, new record, and comments on related species from the northeastern Pacific Ocean. *Proceedings of the Biological Society of Washington* 90(1):66-88.

Meisner K., 2005. Revision of the genus *Spiophanes* (Polychaeta, Spionidae); with new synonymies, new records and descriptions of new species. *Mitt. Mus. Nat.Kd. Berl., Zoo. Reihe* 81(1):3-66.

Voucher Specimens

Vial Number	Sample Number	Station	Sample Date	Number of Specimens	Comments
1	SWOOA101	28	21 Sep 1999	1	DJN, small specimen in good condition with pygidium and palps
2	SWOOA105	34	20 Sep 1999	6	PRM, all specimens in good condition some with pygidiums

Revision History:

DATE	TAXONOMIST	COMMENTS
------	------------	----------