



# City and County of San Francisco Voucher Sheet

Voucher #: P625

Taxa: Polychaeta: Spionidae

Original Prep. Date: 17 Nov 99

Prepared By: D. Norris

Species Code: Dip\_caulleryi

Species: *Dipolydora caulleryi*

Authority: (Mesnil, 1897)

Common Synonyms: *Polydora brachycephala*  
Hartman, 1936

## Voucher Information

SAMPLE NUMBER	STATION	SAMPLE DATE	NUMBER OF SPECIMENS	COMMENTS/NOTES
RMPA034	BB-70	28 Aug 95	1	1.0 mm sieve, dyed blue, K. Langan
RMPA014	BB-60	30 Aug 94	1	1.0 mm sieve, dyed blue, K. Langan

### Characters:

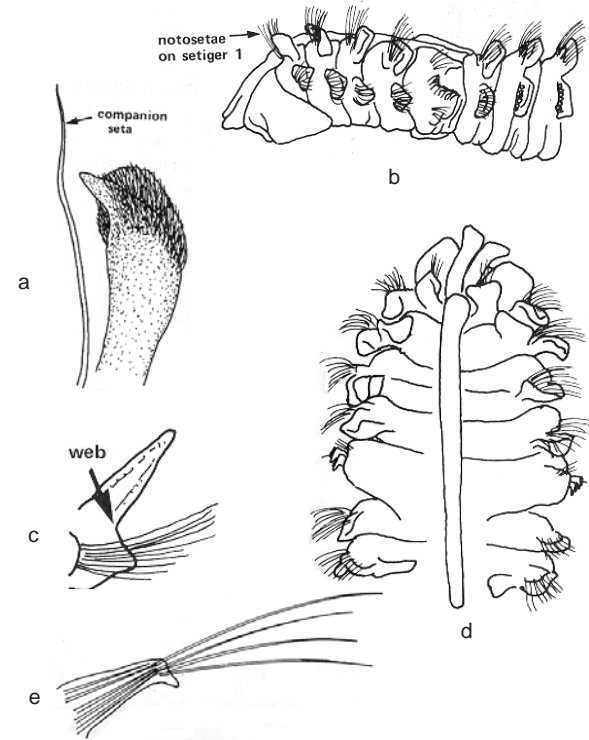
- Spines on 5th setiger of a single type (curved, falcate with a dense mat of bristles), with extremely fine companion setae (a) - spines arranged in a single curved row (b)
- Strap-like gills from setiger 7 (absent in posterior 1/3 of body), fused with dorsal postsetal lamellae, forming a distinct web (c)
- Prostomium deeply incised with no median antennae and a caruncle extending to setiger 7 or 8 (d)
- Notopodia form conical bundles (e) in posterior setigers

### Additional Information:

Pygidium described as 4 equal lobes, however, our specimens lack these due to loss or regeneration. Our San Francisco Bay specimens are found in the shallow subtidal zone.

DISTRIBUTION: Central to Southern California

### Illustrations:



all figures from Light, 1978

### Related Species:

*Dipolydora socialis* (Schmarda, 1861) - Spines on the 5th setiger are straight with a flange and a falcate tip. Lacks dense mat of bristles.

### Comments:

Many authors have synonymized *D. caulleryi* and *D. brachycephala*; however there is a major disparity in the descriptions of caruncle length. This character is either variable or perhaps *D. brachycephala* is a valid species.

***Dipolydora caulleryi*** (continued)

**References:**

- Blake, J. A. Family Spionidae Grube, 1850. p. 198, in *Taxonomic Atlas of the Benthic Fauna of the Santa Maria Basin and Western Santa Barbara Channel*, vol. 6, eds. J. A. Blake, B. Hilbig, and P. H. Scott. Santa Barbara, CA: Santa Barbara Museum of Natural History. Pp. 418.
- Hartman, O. 1969. *Atlas of the Sedentariate Polychaetous Annelids From California*. pp. 129-130, Los Angeles, California: Allen Hancock Foundation, USC. Pp. 812.
- Light, William J. 1978. *Invertebrates of the San Francisco Bay Estuary System, Spionidae, Polychaeta, Annelida*. pp.111-116, Pacific Grove, California: Boxwood Press. Pp. 211.

**Revision History:**

17 Nov 1999	DJN	Original voucher sheet
01 Aug 2003	SMc	Transform sheet into PageMaker
15 Dec 2003	DJN	Revisions and update conventions