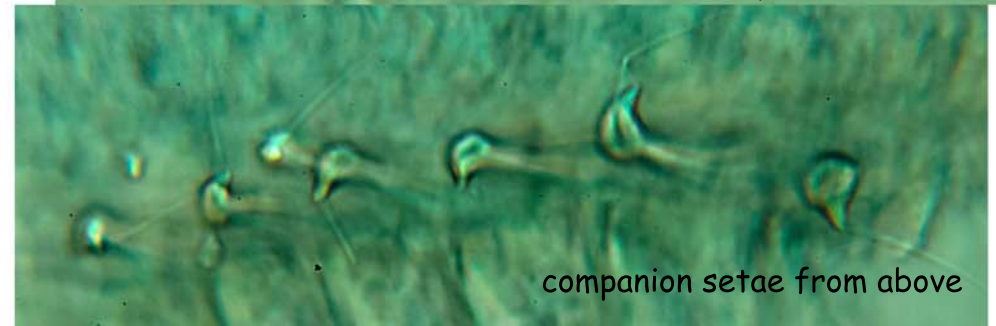


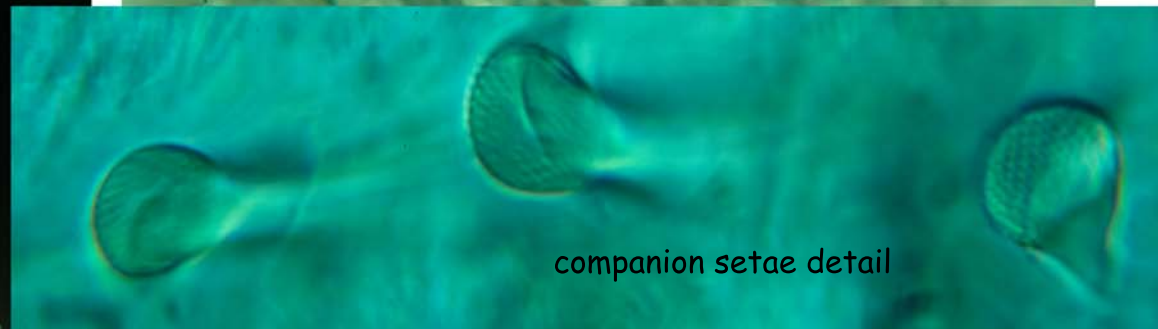
Bight 2013  
Sta. 9171  
17JUL2013  
16m



thoracic uncini and companion setae



companion setae from above



companion setae detail



## Parasabella fullo (Grube 1878)

- The main stem of each radiole has two rows of irregular reddish colored dashes along most of its length
- The pinnules of the radioles are pigmented in bands; also reddish in color
- Radiole tips clavate
- Thorax with 8 setigers (first uniramous); 30+ abdominal setigers
- Companion setae present (see images)
- Raised collar does not take up methyl green stain
- Ventral scutes with deep stain
- Dorsum largely unstained except the last few abdominal setigers
- No pygidial cirri observed; with solid stain
- One specimen found