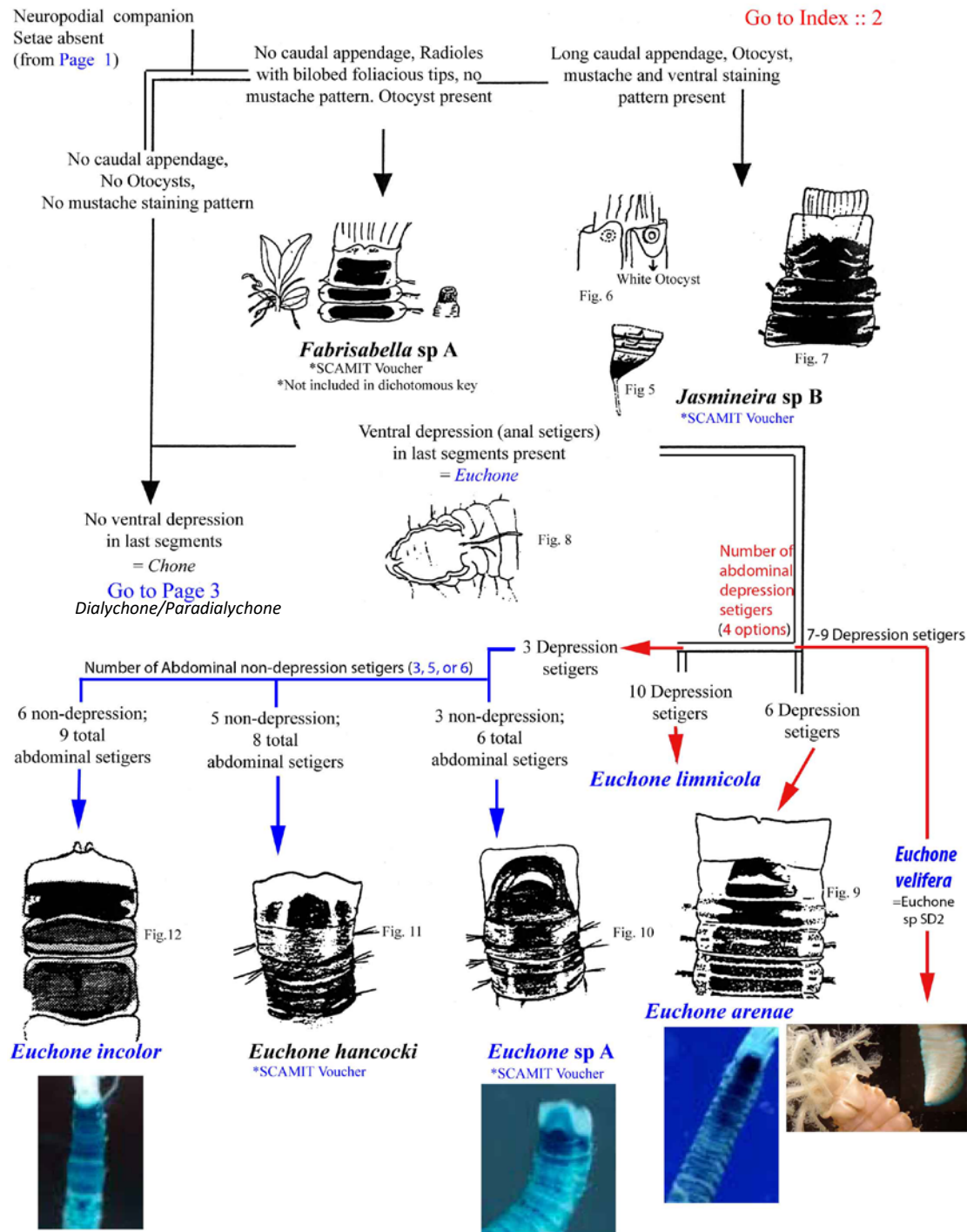


Page 2  
Dot's Nifty Sabellid  
Picture Key  
Ver. 2017



# *Jasmineira* sp A SCAMIT 1986

*Jasmineira* sp.B SCAMIT 1986  
Sabellidae

Vol. 5, No. 6

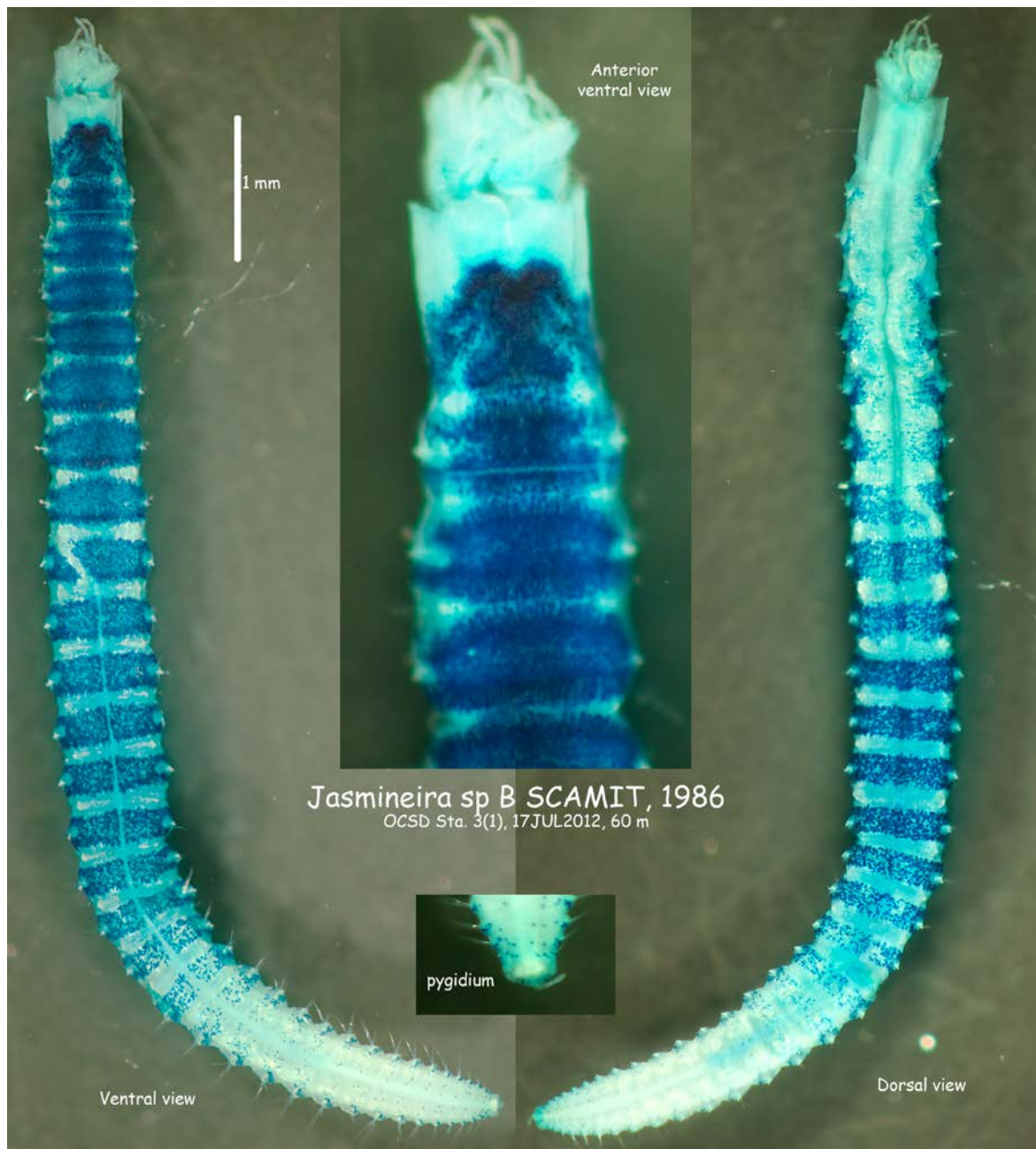
SCAMIT Code: Provisional Date examined: June 12, 1986  
Voucher by: Leslie H. Harris (MBC)

SYNONYMY: *Jasmineira* sp.A Harris  
*Fabrisabella* sp.A Williams

LITERATURE: Annenkova 1937  
Banse 1979  
Fauvel 1927

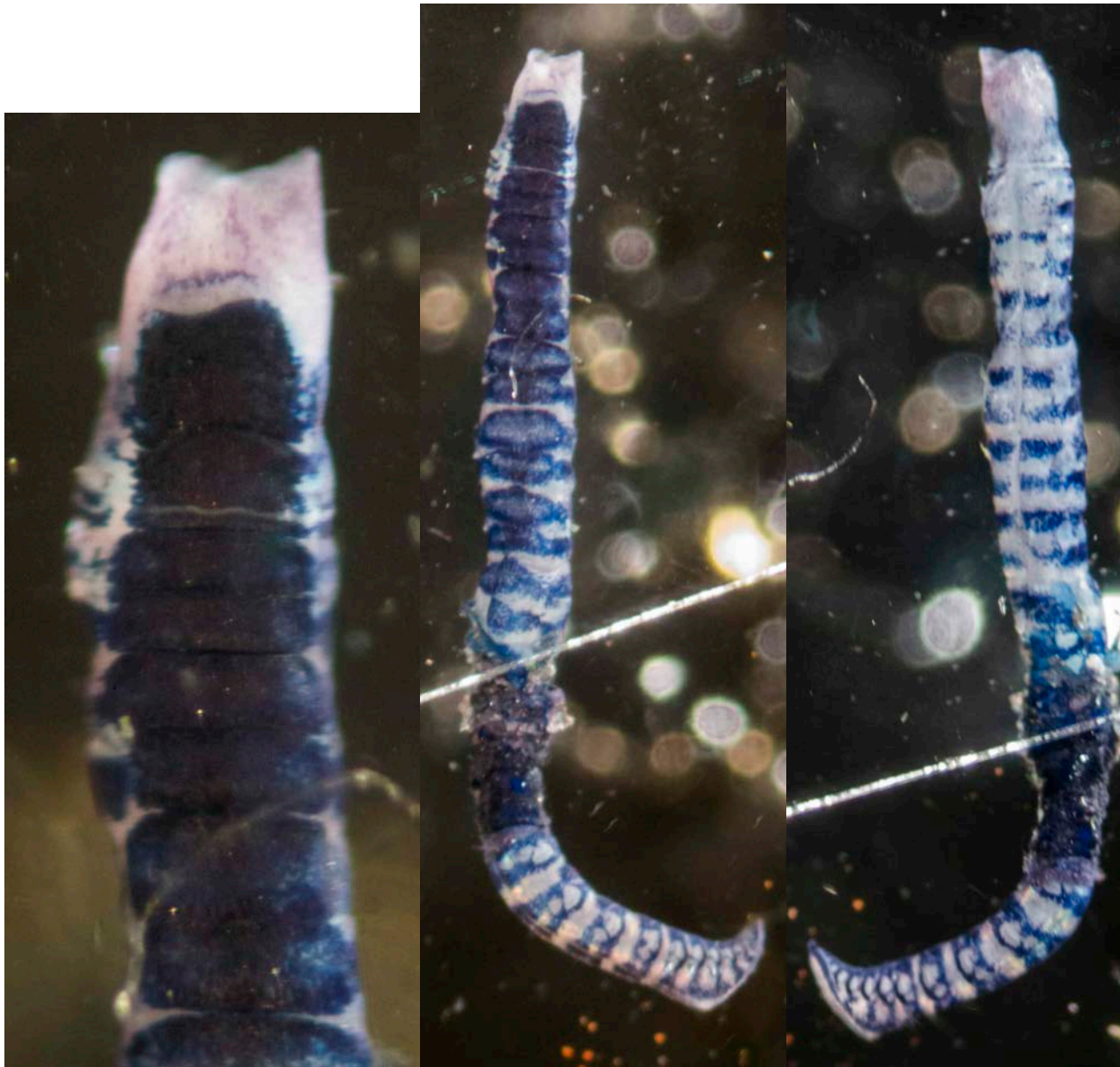
## DIAGNOSTIC CHARACTERS:

1. Body long and linear, 7mm without crown.  
8 thoracic and about 25 setigers.
2. Thoracic notosetae 3 kinds: bilimbate, subspatulate and spatulate with short mucron. Abdominal neurosetae capillary or unilimbate with very narrow wings.
3. Thoracic neurosetae long-handled, acicular uncini, gently bent, 7-12 per fascicle. Abdominal uncini avicular, S-shaped, strongly-bent, 10-11 per fascicle. Both types have large main fang and crest of smaller teeth. No companion setae.
4. Collar with ventral notch, fairly level all the way around, dips slightly dorsally. Dorsal edges infolded, rarely gaps, branchial basis covered.
5. Anus ventral, pygidium has digitate caudal appendage. No eyespots.
6. Otocysts (vascular folds) present, 1 pair, dorsally within the collar.
7. 10-12 pairs of radioles, long. Branchial crown usually broken off slightly above branchial basis. No flange or palmate membrane (?).
8. Narrow glandular girdle on setiger 2. Intra-segmental furrows present in thoracic setigers.





*Euchone arenae* Hartman 1966



Anterior abdominal setigers = 6-9  
Anal depression setigers = 6



# *Euchone incolor* Hartman 1965

28 Aug 95

TO: All marine biologist

FROM: Ricardo

This is a more recent representation of the methyl green staining pattern for *Euchone incolor*. This scan is now incorporated into page two of the sabellid key, and attached for distribution. Thanks for all your comments, if you have any more please let me know. **Don't forget to replace page two in the sabellid key.**



First 3 setigers stain well, and afterwards diffusely.

glandular ring on second setiger (width variable).

*Euchone incolor*

\*Please compare to *Chone* sp. B as a possible misidentification.



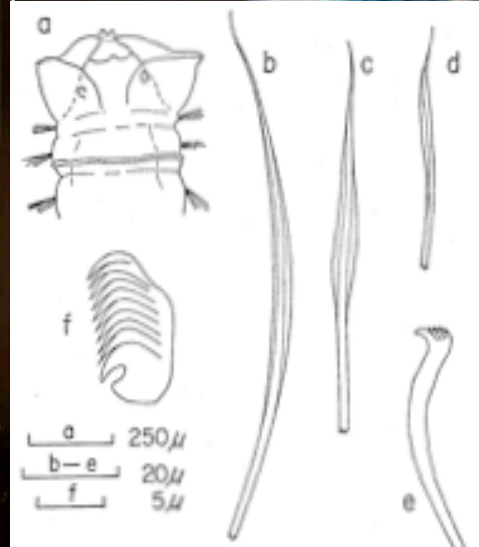
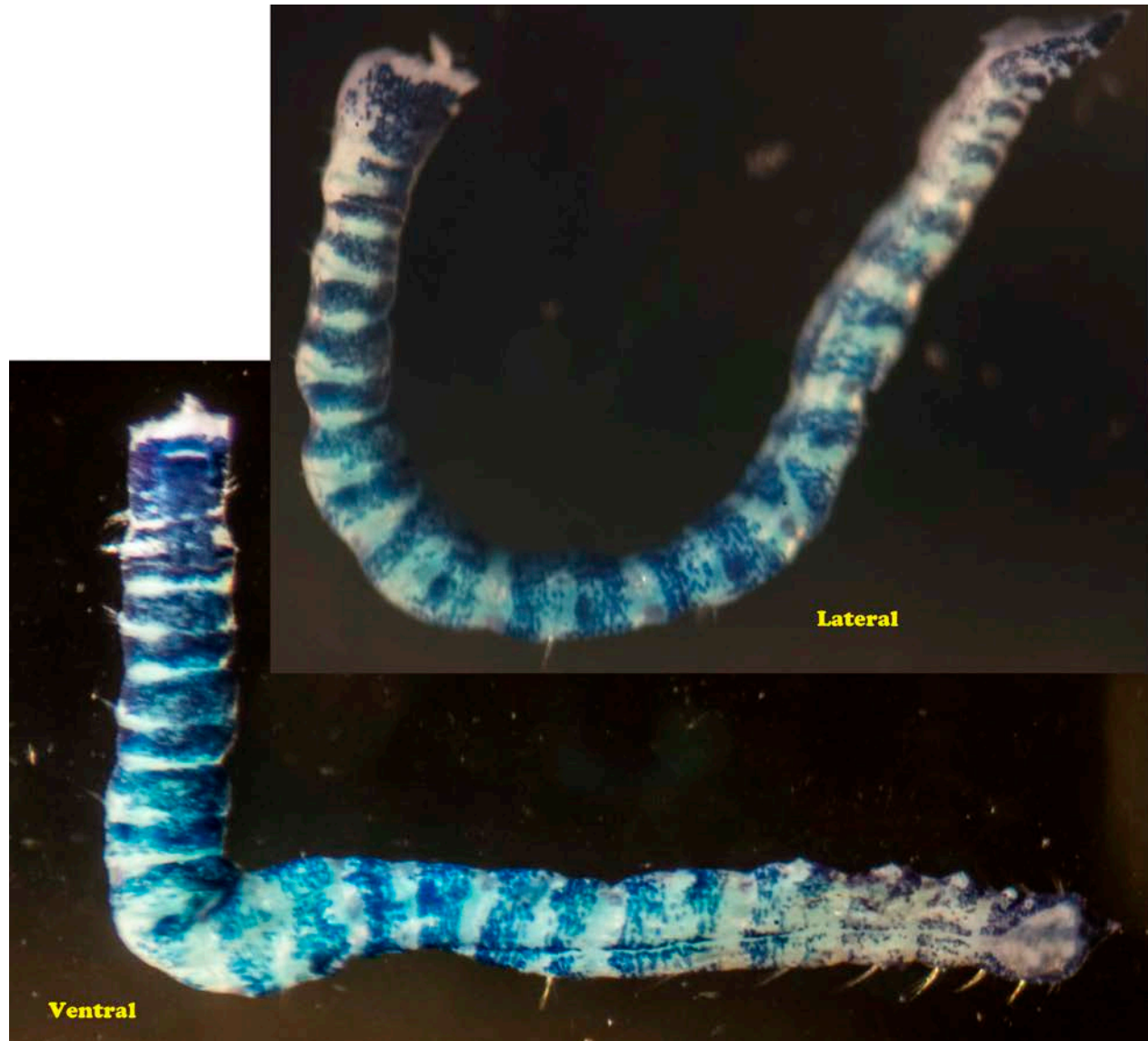
Anterior abdominal setigers = 6  
Anal depression setigers = 3





*Euchone hancocki* Banse 1970

Anterior abdominal setigers = 5  
Anal depression setigers = 3



SCAMIT Code: MBC 46

Date examined: April 14, 1986

Voucher by: Leslie H. Harris  
(MBC)

SYNONYMY: Euchone sp.A Harris  
Euchone sp.A Lovell

LITERATURE: Banse 1957  
Banse 1970  
Banse 1972  
Hartman 1969

DIAGNOSTIC CHARACTERS:

1. Body minute, ovigerous female 2mm long without branchial crown; radioles almost always missing.
2. Abdomen has 3 anterior (pre-funnel) setigers and 3 depression setigers.
3. Large oblique collar, higher ventrally than dorsally; no midventral notch or noticeable lateral notches; narrow dorsal gap.
4. Thoracic notosetae 3 kinds: (a) long, limbate in all setigers; (b) very short, fine geniculate in first 2-3 setigers; (c) short, in setigers 2-8, appear limbate rather than subspatulate.
5. No ventral shields.
6. Faint postsetal glandular girdle on 1st abdominal setiger (very hard to distinguish).

RELATED SPECIES AND CHARACTER DIFFERENCES:

Euchone trilobata (Banse 1957) is the closest species to Euchone sp. A, both having a total of 6 abdominal setigers, and both lacking distinct subspatulate setae. Sp.A's anal depression consists of 3 setigers, its collar is oblique and conceals the branchial basis, and the abdominal uncini have broad bases and large rostra. Trilobata has 4 setigers in its anal depression, the collar is level and doesn't cover the branchial basis,

and the uncini are pectinate. The small species of Euchone found locally are compared with trilobata and sp.A in the following table.

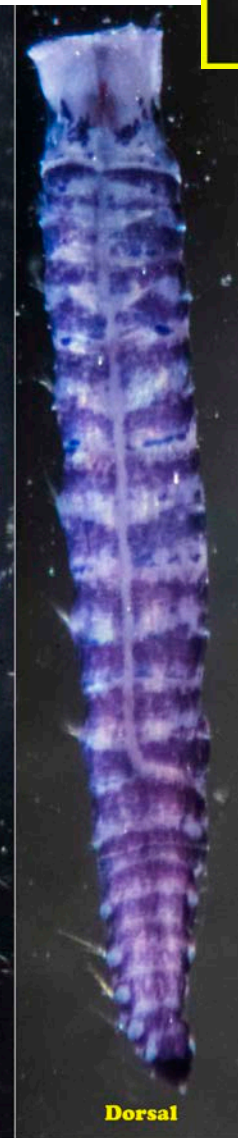
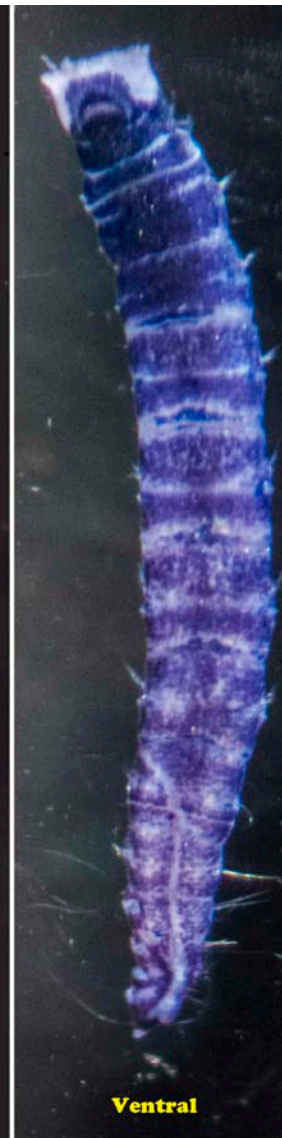
REMARKS: This species has often been identified as E. hancocki or incolor juveniles because of its small size and 3 depression setigers. Juveniles may not have the full number of depression setigers, and the best character to use for identification is the number of anterior abdominal (pre-depression) setigers, which remains constant in small species (Banse 1970).

DISTRIBUTION: Point Conception to Point Loma, 20 to 150m; patchy abundance in soft sediments.

## *Euchone* sp A SCAMIT 1986

Anterior abdominal setigers = 3

Anal depression setigers = 3





*Euchone limnicola* Reish 1960

Anterior abdominal setigers = 8  
Anal depression setigers = 10

- 8 Anterior abdominal setigers
- 10 Anal depression setigers
- Palmate membrane uniting radioles for 2/3 of length



*Euchone velifera*, Banse 1972

Regional 2651

21 July 09

163m

RML 2 May 11

Deep incision ventrally  
formed by the collar being  
folded inwards between  
the two hemispheres  
of the branchial crown.

Non-staining deep intrasegmental divisions  
(ventral shields) without pads in thorax.

9-10 pairs of pinnulated slender  
radioles free from each other  
through their  
entire length.

7-9 Anal depression setigers  
with large "wings" and  
notch at end.  
> 20 total abdominal setigers



# *Euchone velifera* (Juvenile) Banse 1972

C:\Documents and Settings\Richard Rowe\My Documents\Rick\Polychaeta\Sabelliidae\Euchone sp SD2 fide Rowe 2005  
prelim VoucherSht.doc R.Rowe 4Feb2005

## *Euchone* sp SD2 fide Rowe 2005

City of San Diego SedMapPLOO SM079 29July2004 195m.

Large specimen (entire in two pieces) in RCRpersColl - 1.5mm wide mid thoracic, 24 mm total length minus radioles, radioles ~10mm in length

(ENTIRE 1.8mm WIDE X 10.0mm LONG RADIOLES ~11.0mm LONG)

1. 7 depression setigers (7)
2. 28 total abdominal setigers (29)
3. Collar with deep ventral notch, but no lateral notches (as in *E. velifera*).
4. Depression setigers curved around forming scoop with 2-3 setiger tubular enclosure containing anal opening.
5. Only lightly stained (additional staining will be done when imaged). Ventrums of thorax stains across and around lateral enclosing uncini. No stain from notosetal fascicle around through dorsum.

6. 8 THORACIC SETIGERS

Remarks: Additional literature review remains, but preliminary review reveals no matching species from California.

REG 20380 26 JULY 2005 189m RV 0 REIM R/Coll

REG 8052 9 JUL 2010 199m I.D. by RV

= *Euchone velifera* Banse, 1972

## *Euchone* sp SD2 fide Rowe 2005

Regional Station 8052 (KNL)  
9 JULY 2010 / 199m  
RML 2May11

