

# The Species of *Phyllodoce* of Pt. Loma

**Diagnosis:** Genus *Phyllodoce* Lamarck, 1818

Prostomium with 4 anteriorly placed antennae, nuchal papillae usually present, distal portion of proboscis with or without papillae, proximal portion of proboscis with papillae in discrete rows or diffuse pattern, teeth (cusps) may be present, segments 1 and 2 fused, segment 1 dorsally reduced.

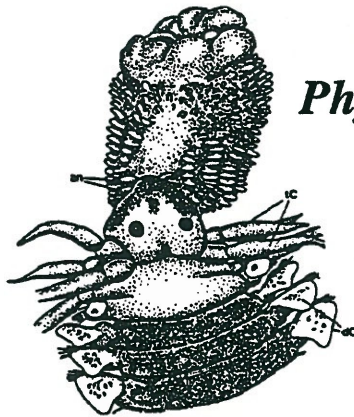
**Tentacular cirri:** 1 pair on segment 1, 2 pair on segment 2, 1 pair on segment 3 with normal ventral cirri.

**SPECIES WITH SETAE  
ON THE 3rd (=LAST)  
TENTACULAR SEGMENT**

THIS PAGE

**SPECIES WITHOUT SETAE  
ON THE 3rd (=LAST)  
TENTACULAR SEGMENT**

GO TO PAGE 2

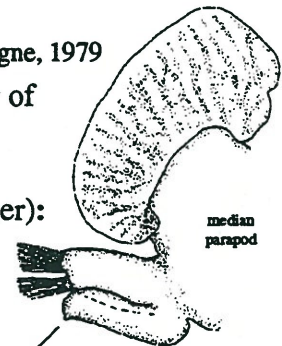


## *Phyllodoce cuspidata* McCammon & Montagne, 1979

**DORSAL PIGMENT:** Darkest on the anterior of prostomium and after the first segment (tentacular segments are unpigmented)

**\*\*\*VENTRAL CIRRI (Look at a median setiger):** Subequal in length to setal lobe with a ventrally pointed "tip"\*\*\*

**SIZE:** Large

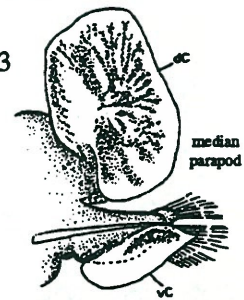


## *Phyllodoce groenlandica* Oersted, 1843

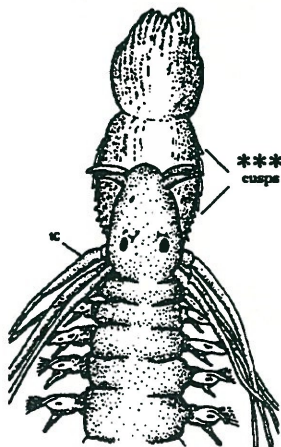
**DORSAL PIGMENT:** Darkest on the anterior of prostomium, segments are uniformly light (usually) or dark, some with dark intersegmental transverse bands

**VENTRAL CIRRI:** Pointed, longer than setal lobe

**SIZE:** Large



→ see multipalpatar



## *Phyllodoce pettibonae* Blake, 1988

**DORSAL PIGMENT:** Uniformly light over entire body, some worms light green laterally

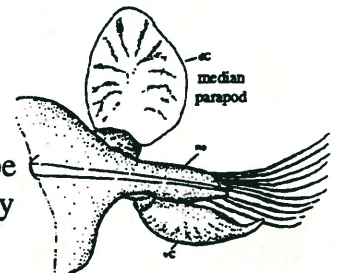
**VENTRAL CIRRI:** Pointed, longer than setal lobe

**FRONTAL ANTENNAE:** inserted subterminally

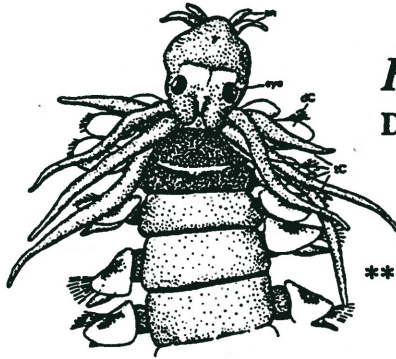
**\*\*\*PROBOSCIS:** With chitinized cusps\*\*\*

**\*\*\*NUCHAL PAPILLA:** Absent\*\*\*

**SIZE:** Small



**SPECIES WITHOUT SETAE  
ON THE 3rd (=LAST)  
TENTACULAR SEGMENT**



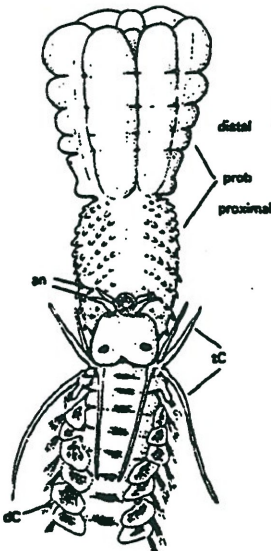
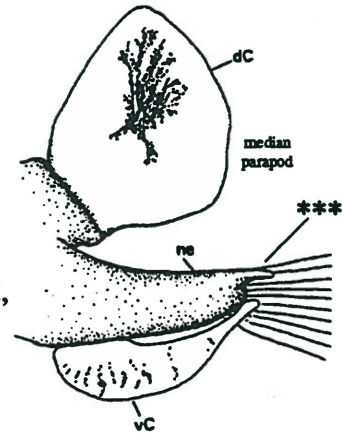
***Phyllodoce longipes*** Kinberg, 1866

**DORSAL PIGMENT:** Concentrated on the last tentacular segment and first 2 setigers

**VENTRAL CIRRI:** Subequal in length to podial lobe

\*\*\***SUPERIOR PODIAL LOBE:** Prolonged, digitate\*\*\*

**SIZE:** Small



***Phyllodoce hartmanae*** Blake & Walton, 1977

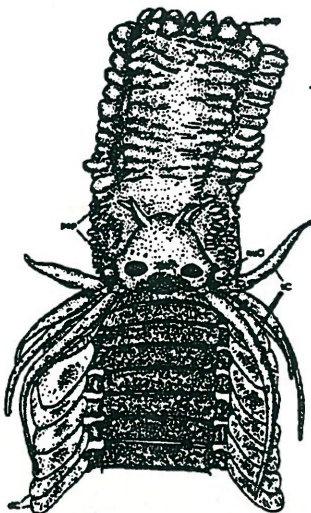
**DORSAL PIGMENT:** Uniform throughout body, some with middorsal intersegmental stripes (see figure)

**VENTRAL CIRRI:** Long and triangular, extend well beyond setal lobe

\*\*\***VENTRAL PIGMENT:** Most with small paired spots (one pair per segment) on anterior 4-6 segments\*\*\*

(not figured)

**SIZE:** Small



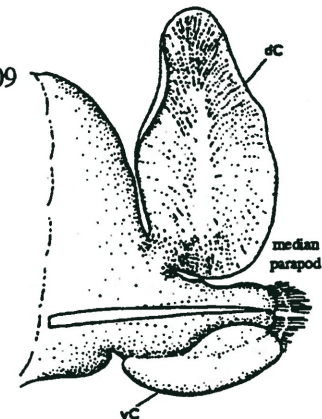
***Phyllodoce medipapillata*** Moore, 1909

**DORSAL PIGMENT:** Uniform throughout, usually darker

**VENTRAL CIRRI:** Rounded apically, subequal in length to setal lobe

\*\*\***NUCHAL ORGANS:** Eversible, visible when the proboscis is everted, located lateral to prostomium near base of first tentacular cirri\*\*\*

**SIZE:** Large



Descriptive material modified from McCammon & Montagne, 1979 and Blake & Hilbig, 1994.

Figures are from Blake & Hilbig, 1994 except *Phyllodoce cuspidata* parapod, which is an original.

This diagnosis is based on "Pictorial Key to the Species of *Phyllodoce* Common to Soft Bottom Sediments Off Southern California" by Dave Montagne.