

May 22, 1995
Voucher By: T. Parker

SYNONYMY: *Eumida* sp. 1 of Hamilton 1976

LITERATURE: Hamilton's SCCWRP Taxonomic Handouts (*Eumida* sp. 1-5)
SCAMIT Newsletter, Vol. 6, No. 8, 1987
Pleijel 1990
Pleijel 1991
Eibye-Jacobsen 1991
Pleijel 1993
SCAMIT Taxonomic List 1994
Blake and Hilbig 1994
Not Fauchald 1977 (as *Eumida bifoliata*)

DIAGNOSTIC CHARACTERS:

1. Less than 8mm long, commonly 3-5mm entire. Width to 0.75mm sans parapodia.
2. Prostomium rounded with 4 terminal antennae, less than length of prostomium. Medial antennae inserted between eyes, extends sometimes beyond segment 1 to segment 3. *Small rounded, 1-2mm long*
3. When everted, pharynx walls smooth or wrinkled without papillae. Ring of papillae on distal end only.
4. Four pairs of tentacular cirriform cirri extended to segments 6-7.
5. Superior neuropodial lobe is prolonged or digitate and is a diagnostic character for the genus.
6. Dorsal cirri variable, but typically longer than broad. May be moderately cordiform or approaching lanceolate condition.
7. Setae typically extend well beyond (>.5 x setal length) most distal margin of dorsal cirri.
8. Pigment spots on dorsum most dense at lateral margins of body wall and centrally on many segments. This pattern resembles 3 longitudinal lines. Prostomium and segments 1-2 may be diffusely speckled.

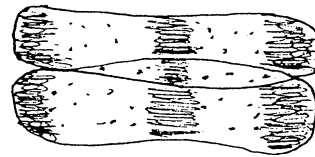
RELATED SPECIES AND CHARACTER DIFFERENCES:

Species of *Eumida* lack the digitate superior neuropodial lobe that is diagnostic for *Sige*.

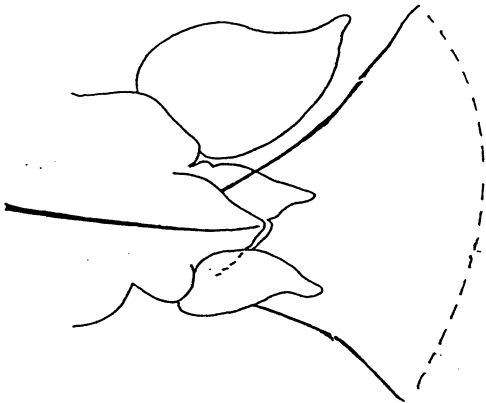
DISTRIBUTION: Throughout Southern California in 30-305 M.



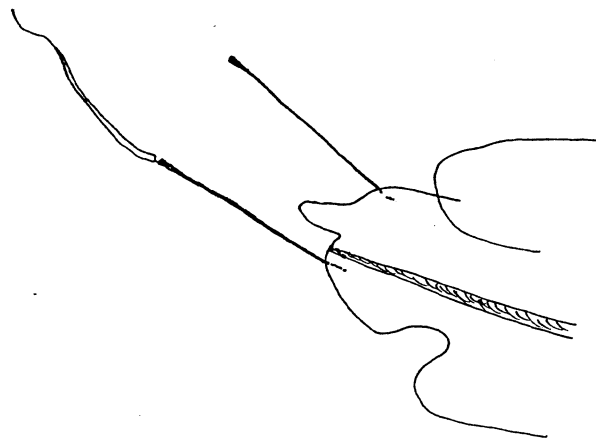
prostomium
LACSD-T5D



dorsal pigmentation
LACSD-T5D



parapodial lobes w/~~o~~ cirri
anterior view, seg #13
LACSD-T5D



parapodial lobes w/^o cirri
posterior view, seg. #~18
LACSD-T5D