



City of San Francisco Provisional Species Sheet

Species: *Eteone lighti*

Voucher #: P295

Taxa: Polychaeta: Phyllodocidae

Date: 04 Oct 00

By: Dot Norris

Species Code: 278

Voucher Information

SERIAL NUMBER	STATION	SAMPLE DATE	NUMBER OF SPECIMENS	COMMENTS/NOTES
CISNET	CAN	2 Feb 00	5	Specimens dyed pink, one large (~30mm), 1 mm sieve size

Characters:

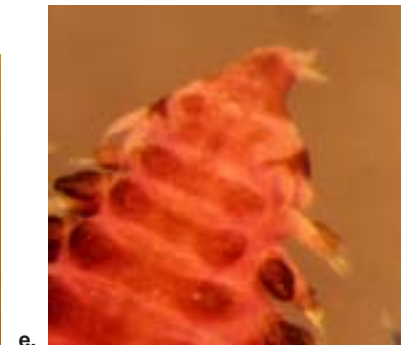
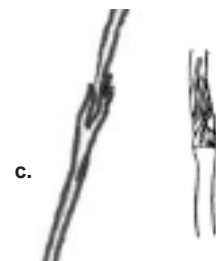
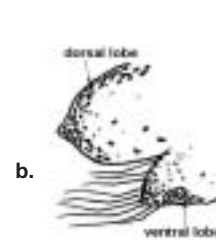
- Dorsal lobes start out rounded but develop a tip which elongates in posterior segments (a & b).
- Ventral lobes pointed and positioned posterior to the setal lobe (a & b).
- Pygidial cirri long and pointed (d).
- Pigment in sacs which are concentrated on the distal ends of the lobes (b).
- First segment dorsally reduced (e).
- Tongs on spinigers are long and even (c).

Illustrations:

posterior parapodia

anterior parapodia

tongs of spinigers



Related Species:

Comments: