

# Phyllodocidae (Annelida: Polychaeta) from the City of San Diego's Ocean Monitoring Program

## Family Phyllodocidae

*Eteone* sp

*Eulalia californiensis* (Hartman 1936)

*Eulalia levicornuta* Moore 1909

*Eulalia quadrioculata* Moore 1906

*Eumida longicornuta* Moore 1906

*Mystides* sp

*Nereiphylla castanea* (Marenzeller 1879)

*Paranaitis polynoides* (Moore 1909)

*Phyllodoce cuspidata* McCammon & Montagne 1979

*Phyllodoce groenlandica* Ørsted 1843

*Phyllodoce hartmanae* Blake & Walton 1977

*Phyllodoce longipes* Kinberg 1866

*Phyllodoce medipapillata* Moore 1909

*Phyllodoce pettiboneae* Blake 1988

*Sige* sp A SCAMIT 1995

## Selected Illustrations of Some Common Phyllodocidae (excluding *Phyllodoce* spp)

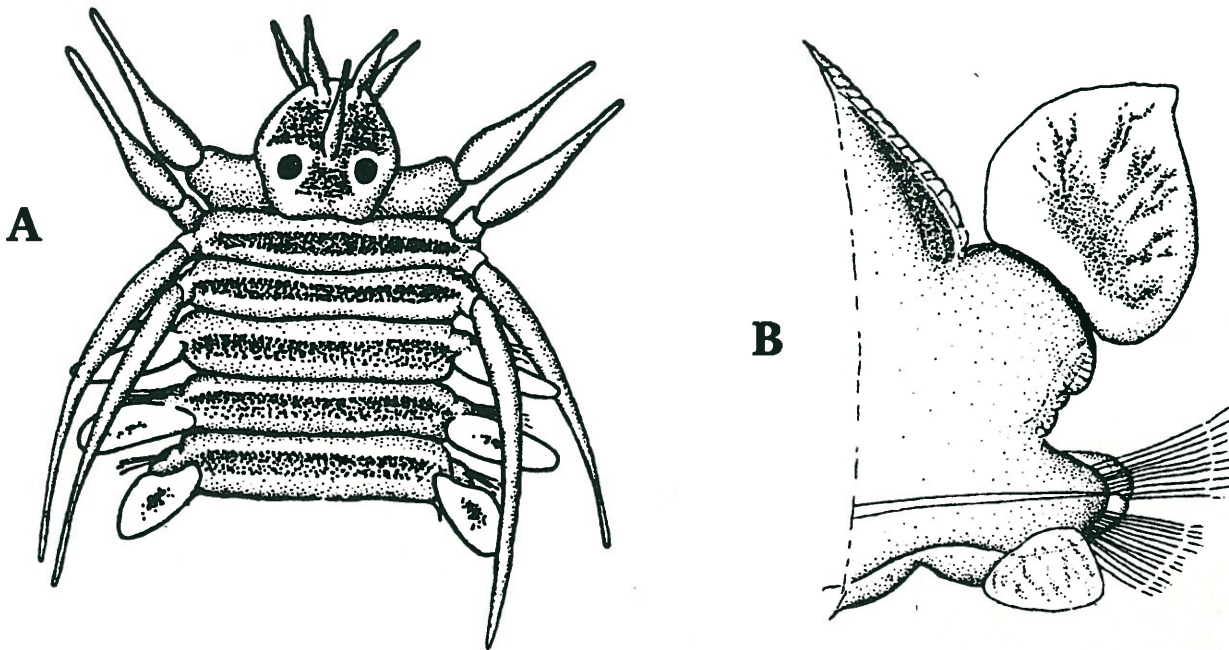


Fig. 1 — *Eumida longicornuta*: A. anterior-dorsal view, B. middle parapodium, anterior view.

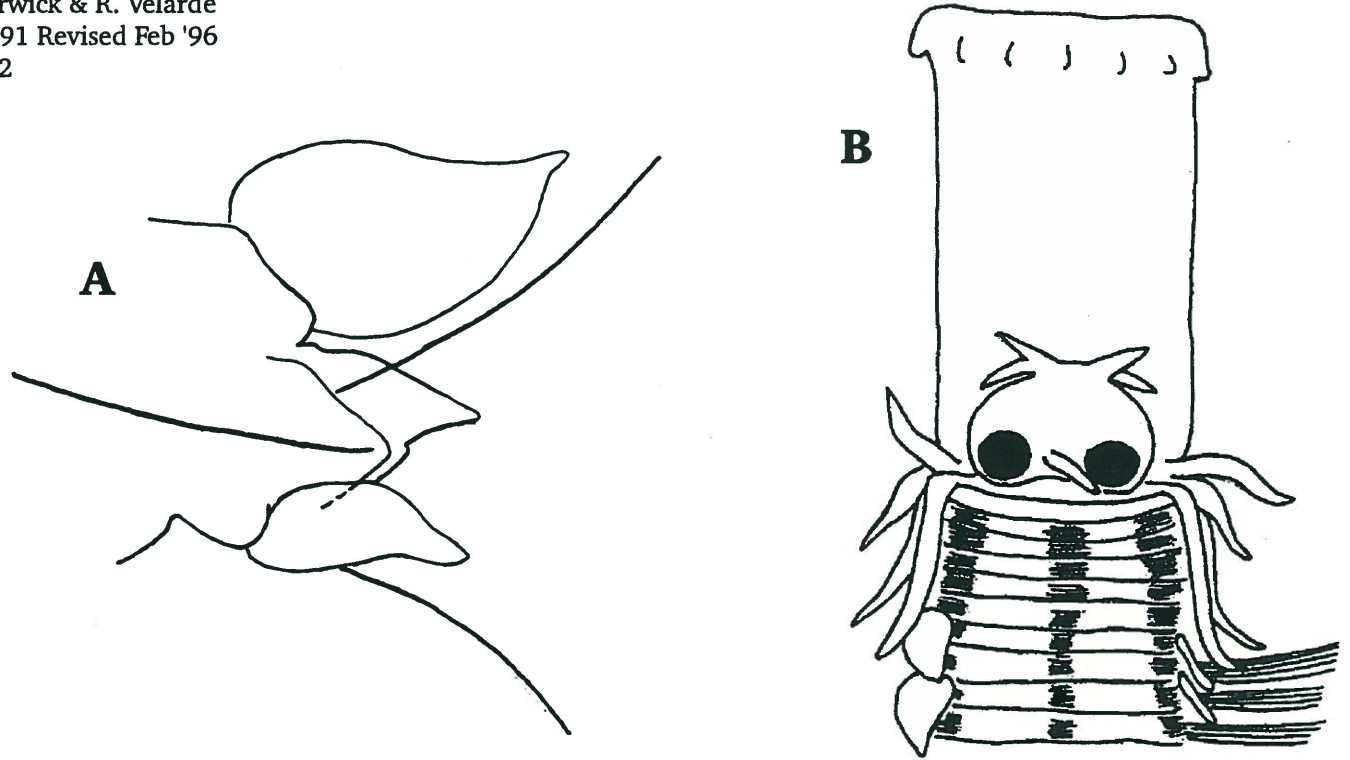


Fig. 2 — *Sige* sp A: A. middle prapodium, posterior view showing prolonged presetal lobe, B. anterior-dorsal view.

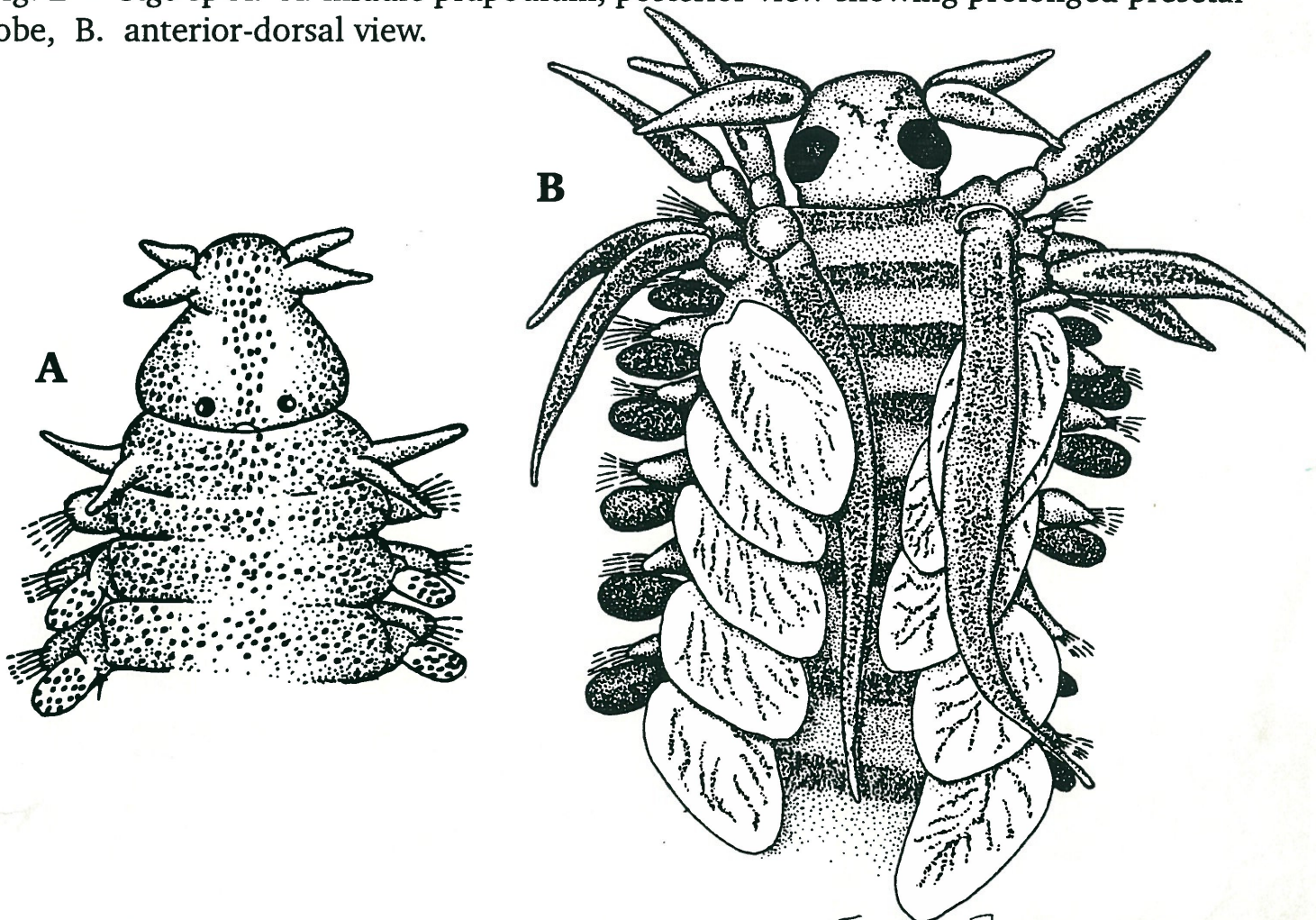


Fig. 3 — A. *Eteone* sp, anterior-dorsal view. B. *Nereiphylla* [castanea], anterior-dorsal

*Nereiphylla* sp 2

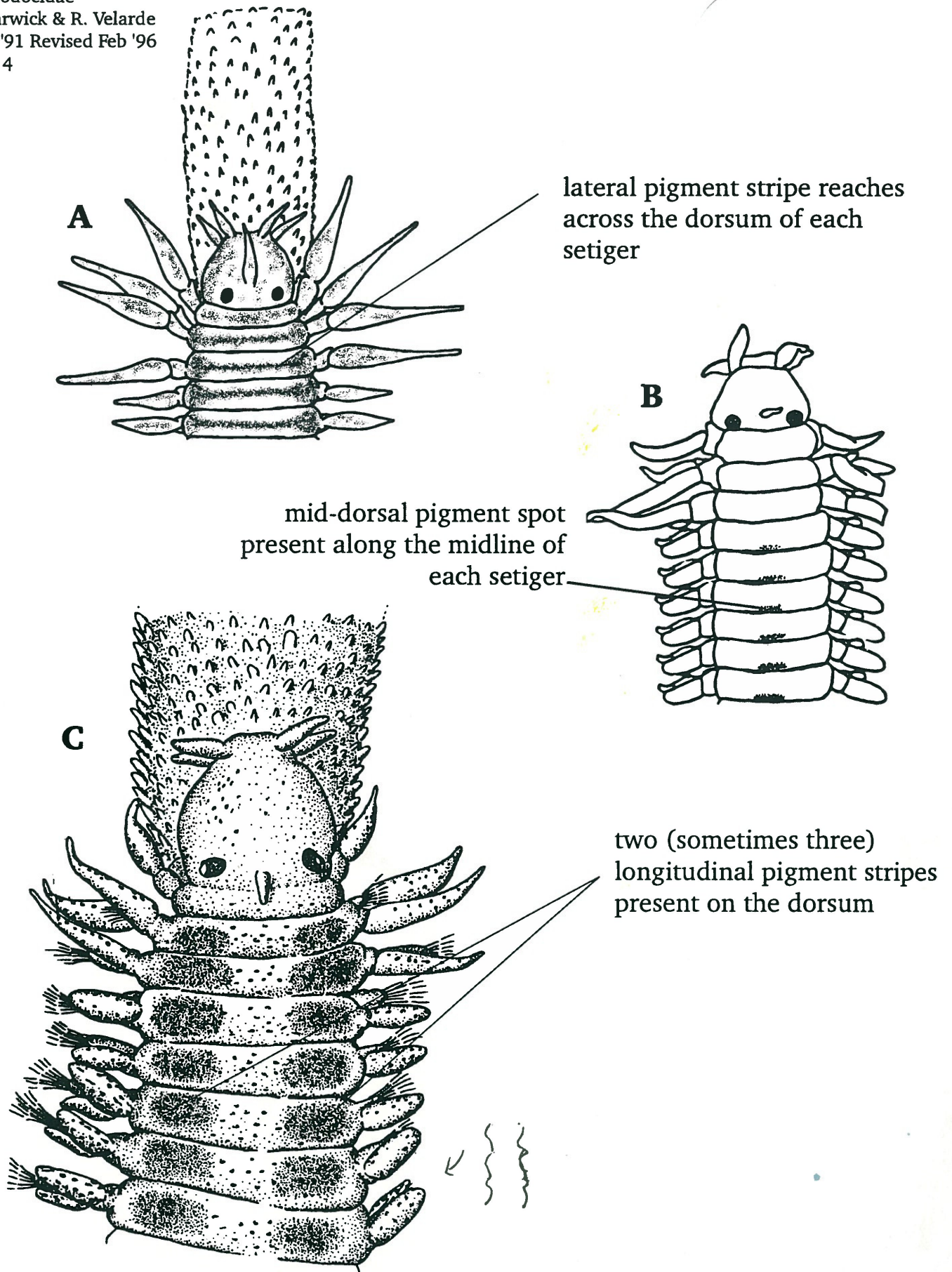


Fig. 5 — A. *Eulalia quadrioculata*, anterior-dorsal view. B. *Eulalia levicornuta*, anterior-dorsal view. C. *Eulalia californienis*, anterior-dorsal view.

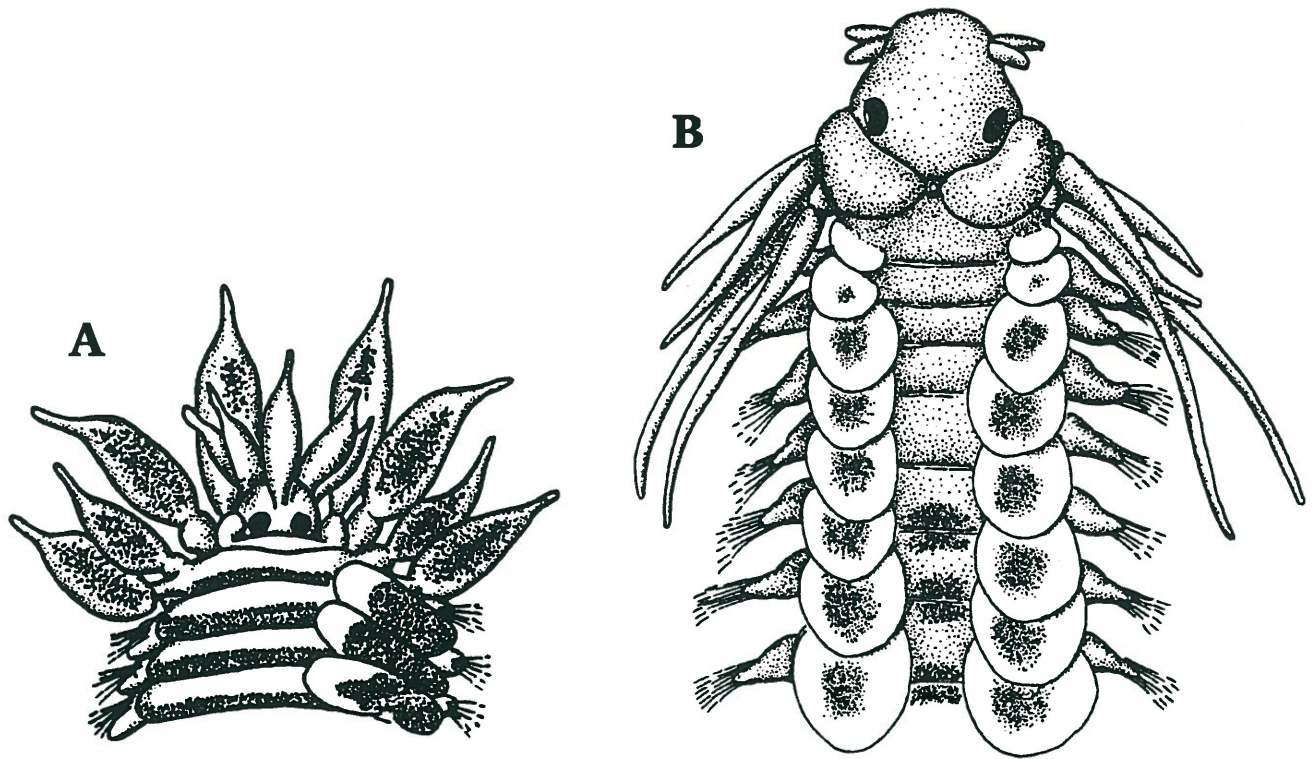


Fig. 4 — A. *Clavadoce* <sup>sp.</sup> ~~splendida~~, anterior-dorsal view. B. *Paranaitis polynoides*, anterior-dorsal view.

## Figure List

Figure 1,3,4,5C .....	Blake, 1994
Figure 2 .....	City of San Diego
Figure 5B .....	Modified from Harman, 1968
Figure 5A .....	Modified from Blake, 1994

## Literature Cited

- Blake, James A. 1994. 4. Family Phyllodocidae. In: *Taxonomic Atlas of the Benthic Fauna fo the Santa Maria Basin and Western Santa Barbara Channel. Volume 4. The Annelida Part 1. Oligochaeta and Polychaeta: Phyllodocida (Phyllodocidae to Paralacydoniidae)*. Santa Barbara Museum of Natural History. 377pp.
- Hartman, Olga. 1968 *Atlas of the Errantiate Polychaetous Annelids from California*. Allan Hancock Foundation. 828pp.
- City of San Diego. *Benthic Infauana Identification Training Manual*. 1st Edition. Taxonomy Group: Marine Biology Section: City of San Diego.