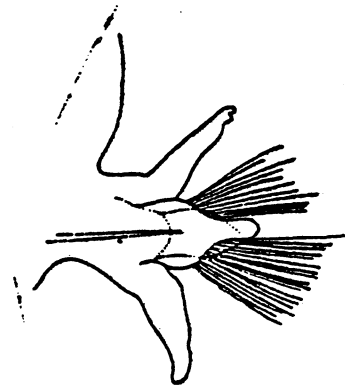


VOUCHER SHEETGlycinde armigera (Moore, 1911)

Goniadidae

Date Examined and Code: February 14, 1983Keys Used: Hartman, O. 1968 (Atlas) p. 643Other Literature: Banse, K. and K.D. Hobson. 1974 p. 80
Hartman, O. 1950 p. 49Important Characters: Dorsal cirrus ^{maybe} ~~not~~ incised near tip; parapodia uniramous through 30 segments, transitional through 30 or more segments, biramous in all posterior segments; notopodial presetal lobes cordate (fig. 1); eversible proboscis covered with yellow, chitinized spines (fig. 2).Related Species and Character Differences: Glycinde polygnatha - dorsal cirrus incised near tip (fig. 3); parapodia biramous in median setigers.Comments: Occurs in low intertidal zones to 550 meters.Fig. 1 (Hartman,
1968: p. 643)Fig. 2 (Hartman,
1968: p. 643)Fig. 3 (Hartman,
1968: p. 645)