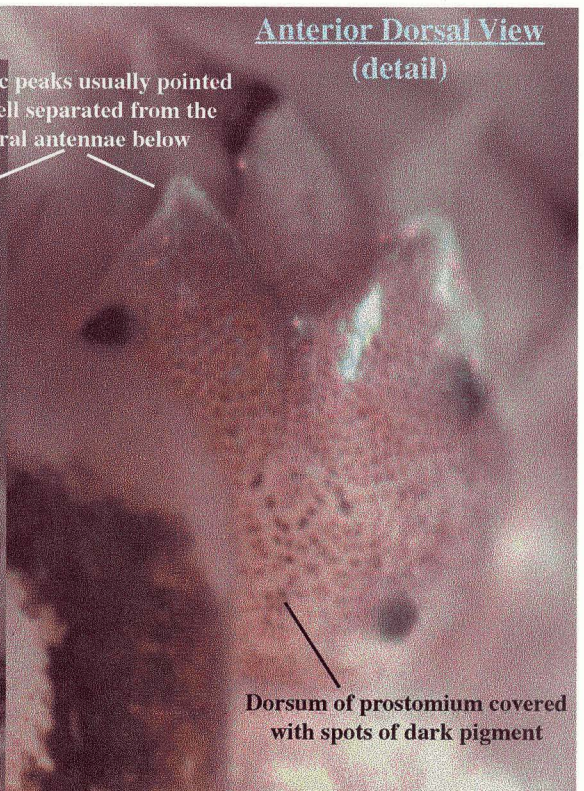


# *Malmgreniella macginitiei* Pettibone, 1993

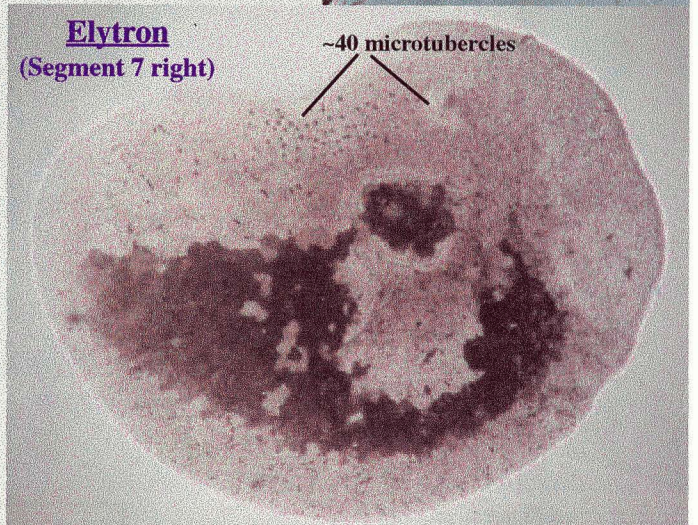
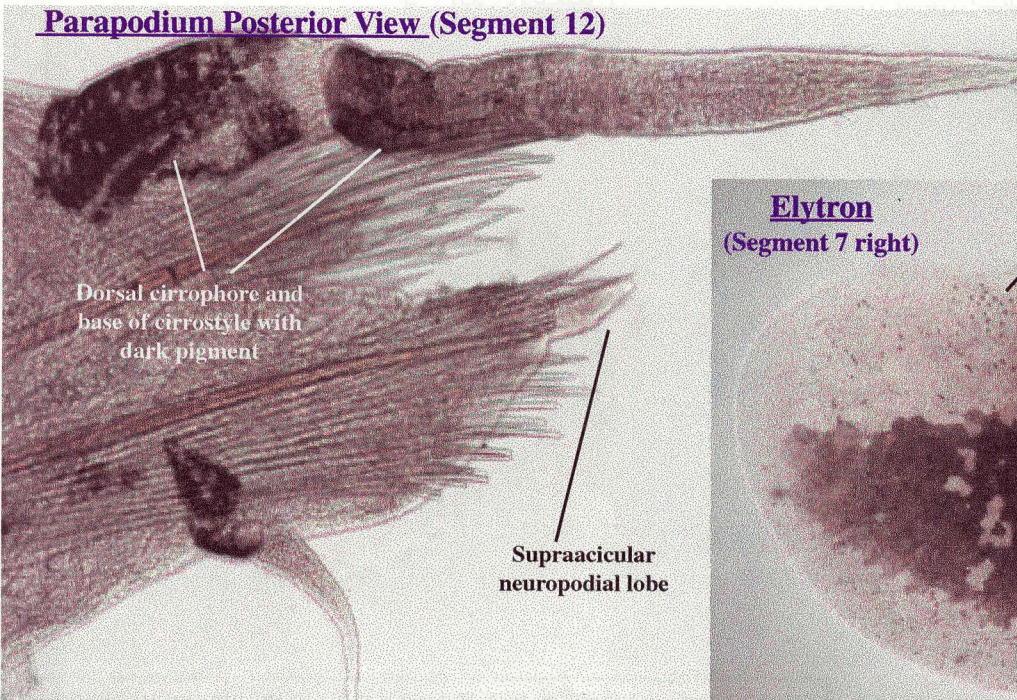
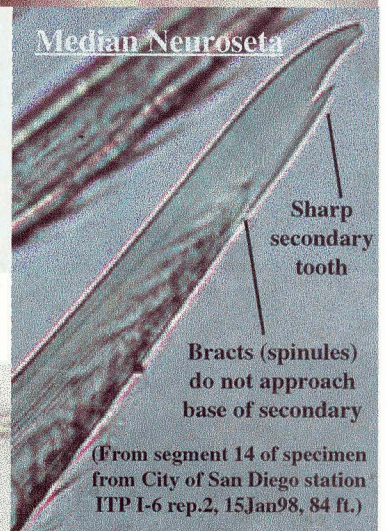


Cephalic peaks usually pointed and well separated from the lateral antennae below



Several specimens of this species have been examined.

Nearly identical specimens from Los Angeles County Sanitation District and from the vicinity of the U.S.-Mexico border are pictured on this and the following page. This species is nearest to *Malmgreniella* sp SD 2 and differs mainly in possession of shorter supraacicular neuropodial lobes, dark pigment on the dorsal cirrophores and bases of cirrostyles, fewer microtubercles on the elytra (~50 vs ~100), and the darker pigment on the dorsum of the prostomium and on posterior setigers.



All digital images (except the neuroseta) are from a specimen from the Los Angeles County Sanitation District 0797-3D, 30 meters depth, 9July97, identified (originally as *M. bansei*) and provided by Cheryl Brantley.

City of San Diego  
Ocean Monitoring Program  
R. Rowe 18July98