

Arcteobia sp LA1 Lovell 2012 §

Commensal in tubes of *Streblosoma crassibranchia*, notochaete usually covered with rust colored tube debris (fig 1). **Prostomium w/o peaks (Fig. 2)**, 4 eyes in trapezoidal arrangement. **Ventrum w/o pigment (Fig. 3)**. Notopodia with acicular (superior) and capillary (inferior) chaete (Fig 4). **Notochaete with spinose rows arranged in cusps (Harmothoe like) (Fig 6)**. Neurochaete with subequal bifid tips (Fig 6). Where the subdistal spinose spinulations end is unknown.

Occurs in depths where *Streblosoma crassibranchia* is found, 30-60m, coarser sediments. LACSD, OCSD, Goleta. Can co-occur with *Arcteobia cf anticostiensis*.



Figure 1. Whole body, dorsal view, scale 1 bar = 1 mm.

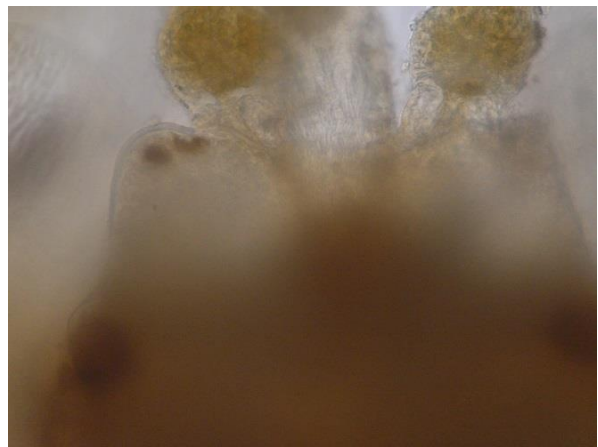


Figure 2. Prostomium without peaks.

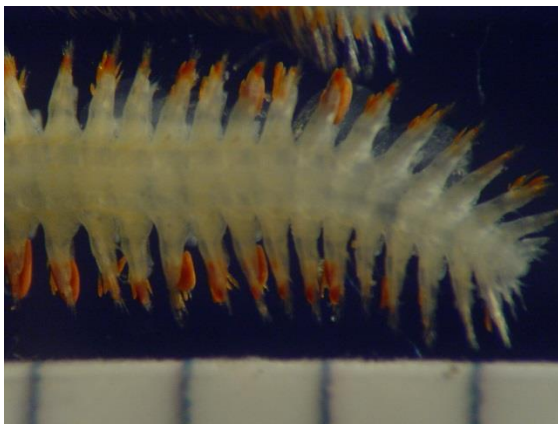


Figure 3. Ventrum without pigment. Scale 1 bar = 1 mm.



Figure 4. Parapodia chaetiger 11



Figure 5. Notochaeta with cusp detail.

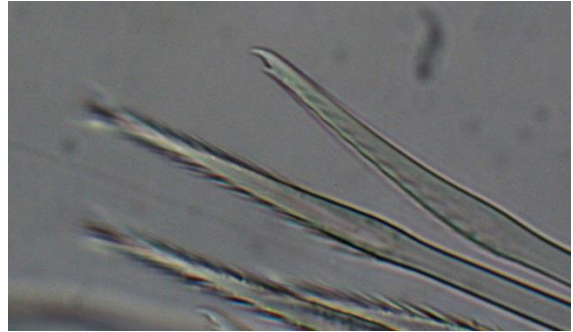


Figure 6. Neurochaeta, detail of bifid tip.