

Arcteobia cf anticostiensis SCAMIT 1990 §

Commensal with *Streblosoma crassibranchia*, notochaete covered in reddish tube debris (Fig. 1). **Prostomium with peaks (Fig. 2)**, 4 eyes in trapezoidal arrangement, pigment band middle rear of prostomium. **Ventrum with dusky pigment in posterior setigers (Fig. 3)**. Elytra with dark pattern in central and posterior lateral margins. Dorsal cirrus papillate. Notopodia with acicular (superior) and capillary (inferior) chaete (Fig 4) both **with longitudinal spinose rows (Malmgreniella like) (Fig. 5)**. Neurochaete with small nearly equal bifid tips (Figs 6 & 7, at 1000x). Where the subdistal spinose spinulations end is unknown.

Occurs in depths where *Streblosoma crassibranchia* is found, 30-60m, coarser sediments. LACSD, OCSD, Goleta. Can co-occur with *Arcteobia* sp LA1 Lovell 2012 §.



Figure 1. Whole body dorsal view showing reddish debris covering notochaete. Scale bar = 1 mm.

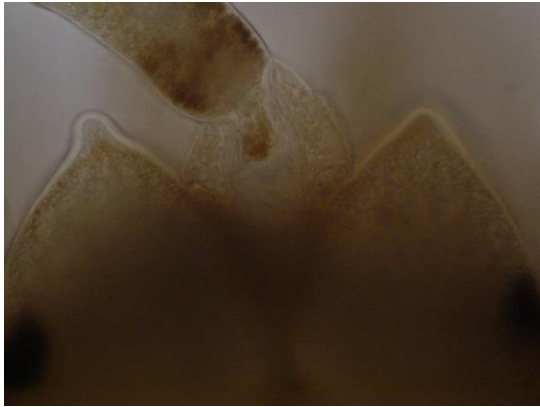


Figure 2. Prostomial peaks.



Figure 3. Ventrum with pigment. Scale bar = 1 mm.



Figure 4. Parapodia showing capillary notochaete.



Figure 5. Notochaete with longitudinal rows of spinules.



Figure 6. Neurochaeta detail, tips subequal.

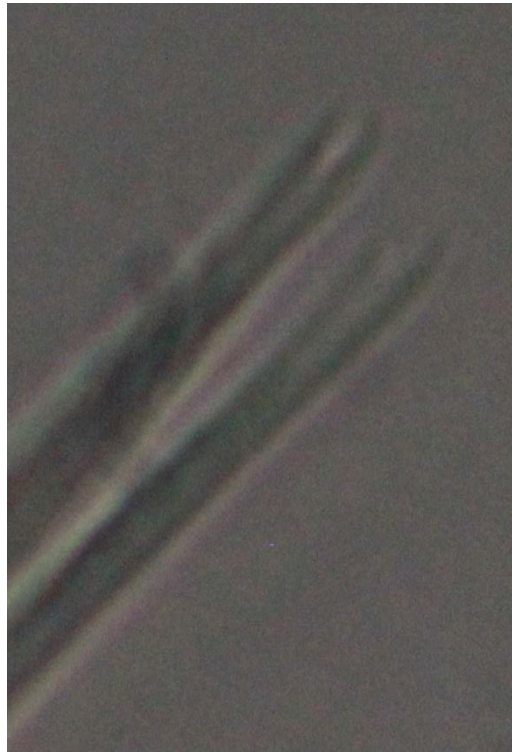


Figure 7. Neurochaeta detail, tips nearly equal.