
CSDLAC specimens 0702-8C4

April 2003

Examined by T. Parker

Literature: Emerson, R. R. 1974. A new species of polychaetous annelid (Arabellidae) parasitic in *Diopatra ornata* (Onuphidae) from Southern California. Bull. So. Cal. Acad. Sci. (73) 1-5.

Hilbig, B. 1995. Chapter 12: Family Oeonidae Kinberg 1865. Emended Orensanz 1990. Taxonomic Atlas of the benthic fauna of the Santa Maria basin and western Santa Barbara channel. Vol. 5: pp. 315-327.

Synonymy: in part *Arabella* sp within Southern California Bight.
in part *Arabella iricolor* within Southern California Bight.

Diagnostic Characters:

1. Four small embedded "eye spots" at base of prostomium.
2. Maxillae 1 has evenly spaced dentate plate opposite a plate with wide gap between two largest teeth (Figure 1).
3. Two acicula per parapodium.

Related Species and Differences:

Arabella iricolor maxilla 1 with simple falcate tips on both sides, each strongly curved inward. Dentition larger sized on one side (Fig. 4). 2-4 acicula.

Arabella semimaculata maxilla 1 with simple falcate tips wider and less pointed. Dentition smaller and more evenly sized (Fig. 2). 4-6 acicula.

Arabella protomutans maxilla 1 with falcate tips asymmetrical with accessory secondary tooth (Fig. 5). Acicula number unknown.

Arabella pectinata maxilla 1 with falcate tips asymmetrical, with one split into bifid structure. Bifid tip maxilla with larger and longer series of denticles (Fig. 3). Acicula number unknown.

Distribution: Southern California coastal bottoms from intertidal to 137 meters.

Arabella endonata Emerson 1974

SCAMIT Vol. 22 No. 2

Illustrations after Emerson 1974 & Hilbig 1995

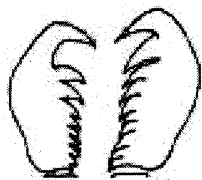


Figure 1. maxilla 1. *A. endonata*

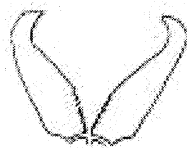


Figure 2. maxilla 1: *A. semimaculata*

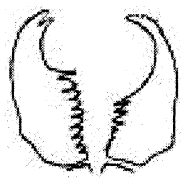


Figure 3. maxilla 1: *A. pectinata*



Figure 4. maxilla 1: *A. iricolor*



Figure 5. maxilla 1: *A. protomutans*