

SCAMIT Provisional Species Voucher Sheet

PROVISIONAL NAME: *Scoletoma* sp. A

TAXON: Annelida, Eunicida, Lumbrineridae

SCAMIT CODE: none

DATE EXAMINED: 12 March 2001

VOUCHER BY: Larry Lovell & Kelvin Barwick

SYNONYMY: *Lumbrineris* sp. A of Harris 1985

DIAGNOSTIC CHARACTERS:

1. Slender body with pointed prostomium, with sensory tip. (See Fig. 1)
2. Simple, multidentate hooks begin setigers 4-9, usually 6-8.
3. Acicula yellow.
4. Parapodia with only post-setal lobes prolonged in posterior segments. Post-setal lobes extend beyond setae. (See Figs. 2 & 3)

RELATED SPECIES AND CHARACTER DIFFERENCES:

1. *Scoletoma luti*: simple, multidentate hooks begin on setiger 1; posterior segments with prolonged post-setal lobes equal to length of setae.
2. *Scoletoma tetraura*: simple, multidentate hooks begin on setiger 1; post-setal lobes slightly prolonged, digitate pointed upward, body robust.
3. *Scoletoma* sp. B: posterior segments with prolonged pre- and post-setal lobes, pre- equal to the length of setae, post- extend beyond setae.
4. *Scoletoma* sp. C: prostomium without sensory tip; simple, multidentate hooks begin on setiger 1; posterior segments with prolonged pre- and post-setal lobes shorter than setae.
5. *Scoletoma minima*: simple, multidentate hooks begin on setiger 13 or later. Note: *Lumbrineris* sp. C of Harris 1985 was erected from paratype material of *S. minima* based on the difference in where the hooks start. The validity of *S. minima* has not been verified with non-holotype material.

DEPTH RANGE: 3-30 m

DISTRIBUTION: Southern California bays, harbors, coastal areas in fine, muddy sediments.

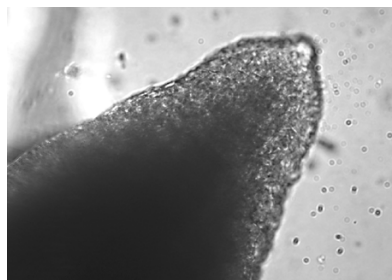


Figure 1. Prostomium.

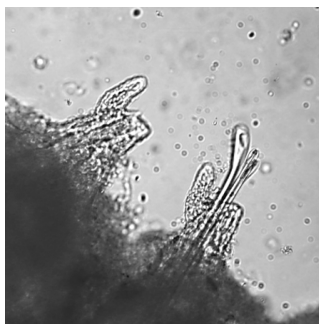


Figure 2. Median segments.



Figure 3. Posterior segments.