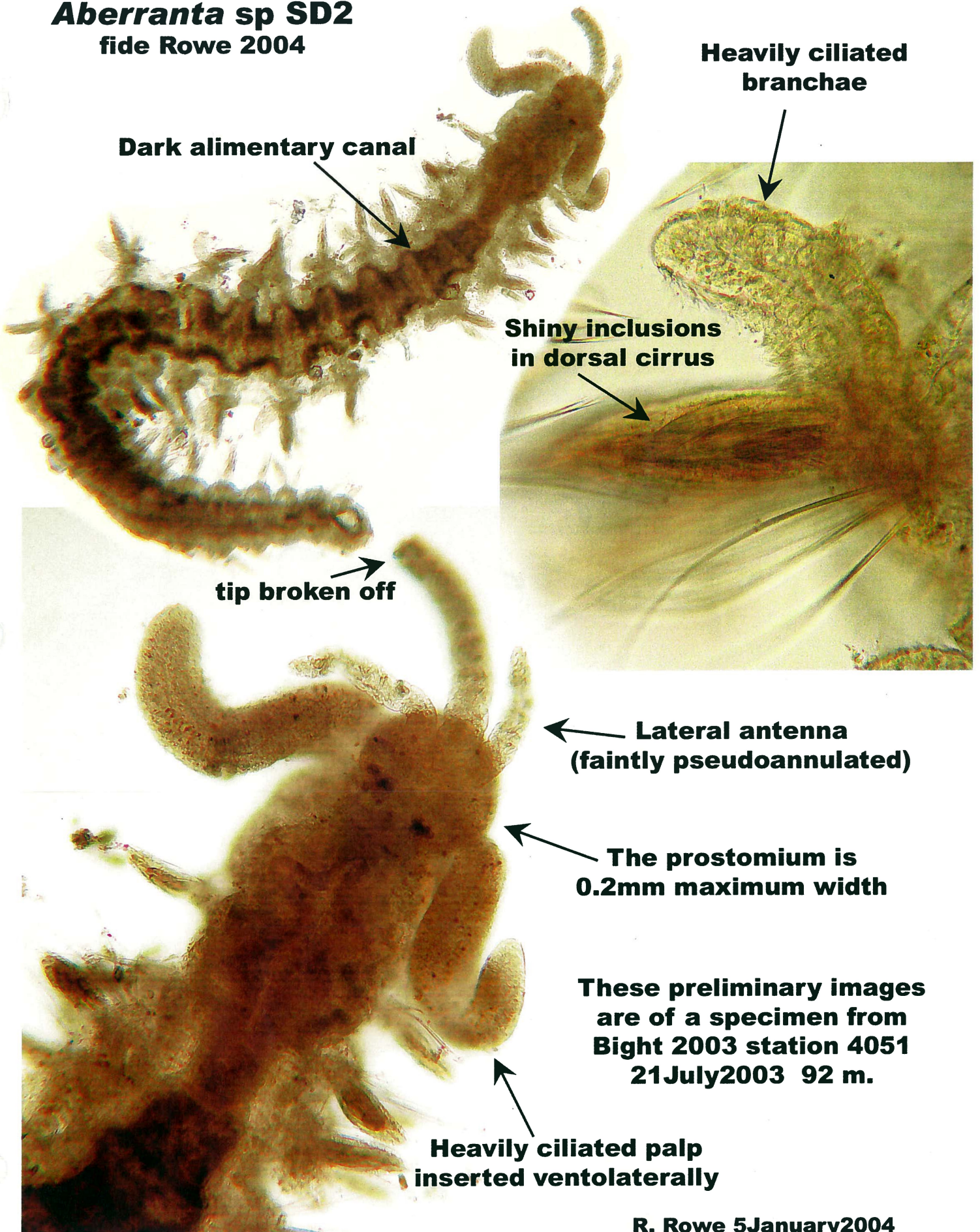


**Aberranta sp SD2**  
fide Rowe 2004



**Dark alimentary canal**

**Heavily ciliated branchae**

**Shiny inclusions in dorsal cirrus**

**tip broken off**

**Lateral antenna (faintly pseudoannulated)**

**The prostomium is 0.2mm maximum width**

**These preliminary images are of a specimen from Bight 2003 station 4051 21 July 2003 92 m.**

**Heavily ciliated palps inserted ventrolaterally**

**R. Rowe 5 January 2004**