



**Southern California Association of
Marine Invertebrate Taxonomists**

3720 Stephen White Drive
San Pedro, California 90731

June 1987

Vol. 6, No. 3

NEXT MEETING: August 10, 1987 (at the Cabrillo
Marine Museum)

SPECIMEN EXCHANGE GROUP: None

TAXONOMIC TOPIC: Cumacea, provisional species, Don
Cadien, Chair

MINUTES FROM MEETING ON JUNE 8, 1987:

This month's meeting was held at the Allan Hancock Foundation worm lab on the USC campus. The opportunity to utilize the AHF polychaete collection provided participants with numerous specimens for comparison. A continuation of this particular meeting is being planned for July 13th. Please contact Leslie Harris at (213) 743-2085 to arrange for space. Thanks also are due to Leslie for making parking arrangements on campus during the June meeting.

Tony Phillips presented a detailed review of methyl green staining patterns in Spiophanes. Participating members will compare the staining patterns to their own specimens for the July meeting. Next Tony will prepare a synopsis with illustrations which will be included in next month's newsletter.

A new voucher sheet is included in this issue for an Oligochaete that was reviewed in Volume 4, Number 10. This new sheet was delayed pending the publication of revisionary work by Dr. F. O. Brinkhurst.

Jobs Available: There are two employment opportunities that we are glad to announce. A position at the Oregon Institute of Marine Biology is open, the flyer for the job is enclosed. Also Battelle's Marine Research Laboratory is looking for help. Their position is listed as follows;

Battelle's Marine Research Laboratory in Ventura, California, is seeking a qualified individual to

FUNDS FOR THIS PUBLICATION PROVIDED IN PART BY ARCO FOUNDATION,
CHEVRON USA, AND TEXACO INC.

The SCAMIT newlsetter is not deemed to be a valid publication for formal taxonomic purposes.

fill a position in invertebrate taxonomy. The individual should have experience in the identification of crustaceans and molluscs. Field sampling expertise and familiarity with West Coast fauna would be preferred. Salary commensurate with experience. Send resume to Helen Spencer at Battelle Ocean Sciences, 1431 Spinnaker Drive, Ventura, California, 93001. Battelle is an equal opportunity employer.

P L E A S E P O S T

RESEARCH ASSISTANT POSITION AVAILABLE

at

OREGON INSTITUTE OF MARINE BIOLOGY
University of Oregon
Charleston, Oregon

A full-time Research Assistant position is available for a one-year (or more) appointment beginning in **August 1987** at the Oregon Institute of Marine Biology.

The primary research project involves experimental field and laboratory studies focused on the ecology of biological invasions in estuarine communities.

Duties include taking quantitative samples of zooplankton assemblages, coordination of a complex sampling program, detailed laboratory analysis of samples, including the identification and enumeration of holoplankton and meroplankton, setting up and monitoring of field and laboratory experiments (including fouling panel, drift markers, and larval culture work), and data analysis (including statistical treatments). Additional duties include maintenance of laboratory operations and equipment, maintenance of field instrumentation, and some travel within Oregon. Salary: \$14,000.

Qualifications:

- * B.S. or M.S. in Biology
- * Background in marine/estuarine invertebrates, including systematics and microscopy experience
- * Biometry/statistical experience
- * Willingness to participate in a sampling and analysis program that may require work on some evenings and weekends

Contact:

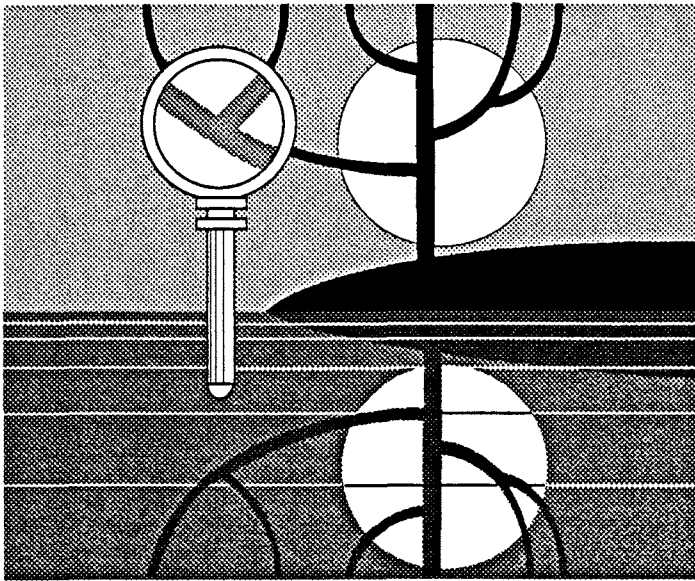
Send letter of interest, resume, and names of references by **July 20, 1987**, to:

Dr. James T. Carlton
Oregon Institute of Marine Biology
Department of Biology
University of Oregon
Charleston, OR 97420

503 - 888-2581

The University of Oregon is an EEO/AA employer.

P L E A S E P O S T



I can remember the very spot in the road, whilst in my carriage, when to my joy the solution occurred to me. The solution, as I believe, is that the modified offspring of all dominant and increasing forms tend to become adapted to many and highly diversified places in the economy of nature.

Charles Darwin

S P E C I A T I O N

AN INTERNATIONAL SYMPOSIUM 5 - 8 NOVEMBER, 1987

CELEBRATING THE 175TH ANNIVERSARY OF THE ACADEMY OF NATURAL SCIENCES

Invited Speakers

J. ANTONOVICS
F. AYALA
S. B. BARRETT
N. BARTON
R. BUTLIN
B. CHERNOFF
J. COYNE
J. CRACRAFT
J. ENDLER
D. FUTUYMA
F. GANDERS
D. GILL
L. GOTTLIEB
P. GRANT
R. HARRISON
G. HEWITT
K. KANESHIRO
A. LARSON
G. NELSON
D. OTTE
J. PATTON
R. RICKLEFS
J. ROUGHGARDEN
A. TEMPLETON
R. VRIJENHOEK
D. WAKE

Contributed papers are welcomed. Committee selected papers will be presented as posters. The best contributed papers will be published in an issue of *The Proceedings of the Academy of Natural Sciences*.

Registration and reception the evening of 5 November, banquet the 7th. Registration fee \$75; students and professionals "in transition" \$15. Pre-registration fee (non-refundable) of \$60 and \$10 until 5 July. Banquet extra; limited number based on first registrations or pre-registration. Pre-publication discount for symposium volume, \$28; \$40 after the symposium.

For information, pre-registration, or submission of papers, write or call Dr. George Davis, Symposium Committee, Academy of Natural Sciences of Philadelphia, Philadelphia, Pennsylvania 19103 Ph. (215) 299-1132.

Accommodation: A special symposium rate of \$45 is available at the Center City Quality Inn, 501 N. 22nd St, Philadelphia, PA. 10130 (215) 568-8300. Reservations must be made by October 1, 1987.

SCAMIT Code: MBC 40

Date Examined: January 13, 1986

Voucher By : Thomas Parker (LACSD)

Literature: Brinkhurst, R.O. 1986. Taxonomy of the genus Tubificoides Lastockin (Oligochaeta, Tubificidae): species with bifid setae. Can. J. Zool. 64:1270-1279.

Brinkhurst, R.O. and H.R. Baker, 1979. A review of the marine Tubificidae (Oligochaeta) of North America. Can. J. Zool. 57:1553-1569.

Synonymy: Tubificoides coatesae Brinkhurst and Baker, 1979
Peloscolex gabriellae Marcus sensu Brinkhurst, 1983 et seq.
(in partim)

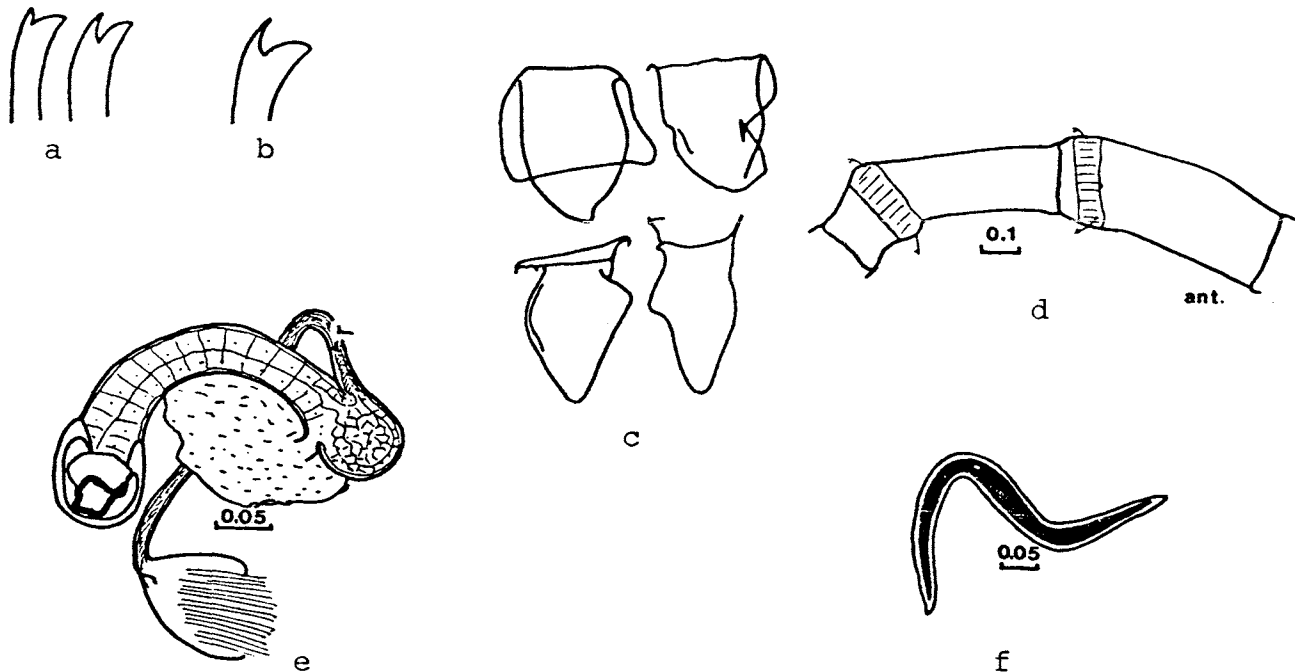
Diagnostic Characters:

1. All setae bifid.
2. Anterior setal bundles contain 2-5 setae.
3. One setae in each fascicle of posterior segment.
4. Penes with cuticular sheaths, conical to thimble shaped.
5. Segments elongate to a maximum at segments XX-XXI.

Related Species and Differences:

Tubificoides pseudogaster differs by not possessing elongate body segments XX-XXI, and by having cylindrical, not conical, penis sheaths.

Distribution: British Columbia to California; Massachusetts to South Carolina; England; and Saudi Arabia.



Tubificoides brownae. Setae of anterior (a) and posterior (b) bundles, penis sheath (c), postclitellar segments(d), male duct (e), spermatozeugmata (f).