

SYNONYMY: None known

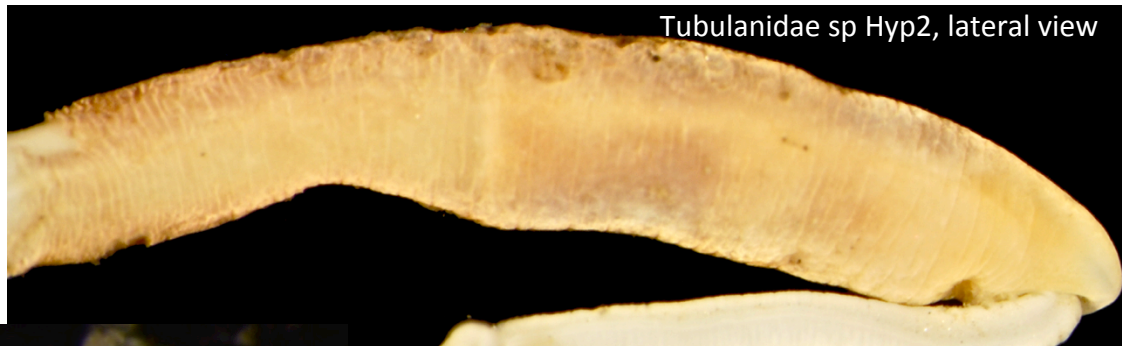
LITERATURE:

DIAGNOSTIC CHARACTERS

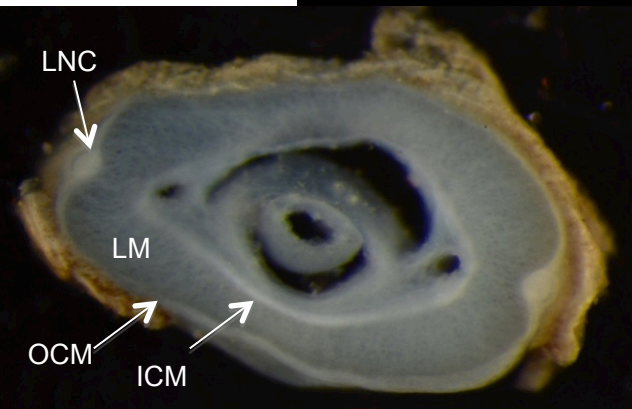
- Body pigmented; head slightly lighter in color than remainder of body; white ring present at posterior of esophageal region
- Head anteriorly rounded, blunt; cephalic slits absent; proboscis pore and large mouth antero-ventral
- CSO absent (not apparent in current specimen)
- LSO absent (not apparent in current specimen)
- Body robust
- Musculature 3-layered Palaeonemertean, lateral nerve cord located outside of outer-circular muscle for entire length of body

Similarities:

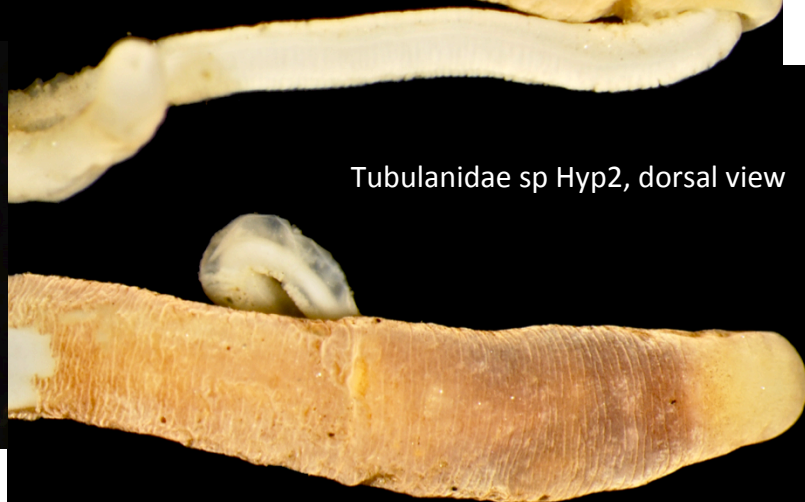
- Differs from *Carinoma mutabilis* Griffin 1898 and *Carinomella lactea* Coe 1905 in having a uniform color throughout the body, except the more cream colored head, and the position of the lateral nerve cord outside of the outer-circular muscle throughout the body.
- Differs from other members of the Tubulanidae lacking LSO by the following:
 - Head and body cream colored with brown speckling anteriorly; preservation band often set off by thin white band along anterior margin; CSO distinctly “C” shaped structure, located anterior of mouth **Tubulanidae sp B**
 - Head and body cream colored without brown speckling; preservation band not set off by thin white band; CSO distinctly “triangle” shaped structure **Tubulanidae sp C**
 - Head and body brownish, head slightly lighter than body; preservation band set off by thin white band but not by change in color **Tubulanidae Hyp2**



Tubulanidae sp Hyp2, lateral view



Tubulanidae sp Hyp2, x-section



Tubulanidae sp Hyp2, dorsal view