



## CITY OF LOS ANGELES VOUCHER SHEET



### ***Photis* sp G**

SCAMIT Vol. 38, No 5

Group: Arthropoda:Malacostraca:Amphipoda:Photidae

SCAMIT CODE: *Photis* sp G

Date Examined: 20FEB20

SYNONYMY: *Photis* sp HYP2

Voucher By: C. Campbell

#### DIAGNOSTIC CHARACTERS:

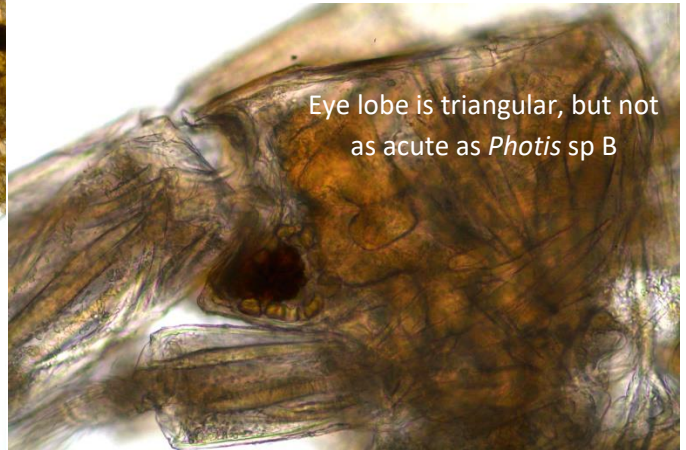
1. Both male and female have distinct gnathopod 2. Female G2 with blunt defining tooth and flat palm. Male G2 with defining tooth and multiple palmar teeth. Bifid palmer tooth closest to dactyl hinge is blunt.
2. Circular pattern of larger corneal lenses surrounding pigmented eye on both male and female.
3. Coxa 1 and 2 with very few setae. Female coxa 1 and 2 ventrally squared. Anterior corner of male coxa 1 and 2 somewhat pointed.
4. Ventral margin of G1 carpus broad on male and female.
5. The four specimens observed ranged from 3-7 mm, all mature.

MALE:

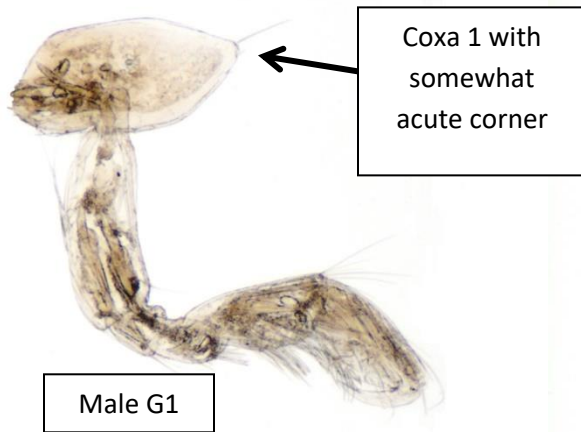


*Photis* sp G

CLAEMD, Station B18-10385 (124 m), 17Jul18



Eye lobe is triangular, but not as acute as *Photis* sp B



Coxa 1 with somewhat acute corner

Male G1



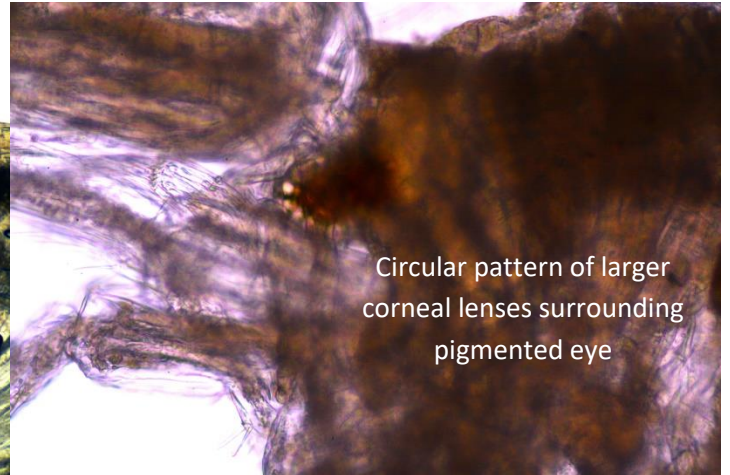
Male G2



Male G2 distinct. Bifid teeth near dactyl hinge blunt



FEMALE:



*Photis* sp G

CLAEMD, Station B18-10385 (124 m), 17Jul18

#### SPECIMEN COLLECTION(S):

- EXAMPLE: CLAEMD, Station B18-10385 (124 m), 17Jul18, 34.0788, -119.509, about 5 km from east end of Santa Rosa Island.
- Also collected at station B18-10288

#### RELATED SPECIES AND CHARACTER DIFFERENCES:

- Female G2 is similar to *Photis brevipes* which has a more sinuous palm and an acute defining tooth. *P. brevipes* also have heavily setose coxae (20 or more on ventral margin of coxa 2). *P. sp G* coxa have only a few setae.
- Gnathopods are very similar to *P. macrotica*. Both have very few setae on coxa 1 and 2 and coxa shape is very similar in both species, but eye is much larger in *P. macrotica*.
- *Photis* sp G has a triangular eyelobe and large corneal lenses forming an outer ring around eye. *Photis* sp B has a more acute triangular eye lobe and fewer corneal lenses. Male *P. sp B* lacks the bifid tooth on G2 palm near dactyl hinge.